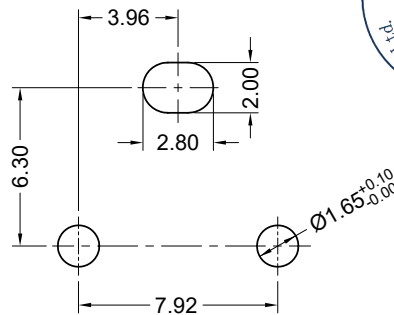
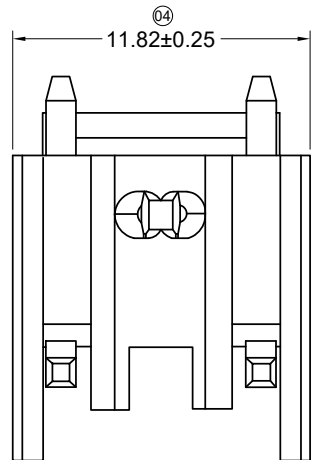
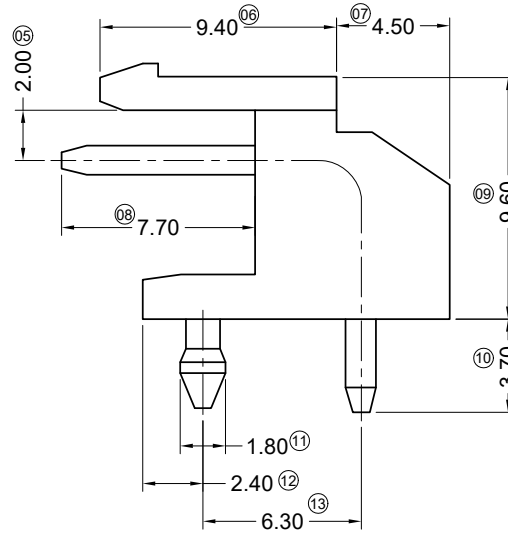
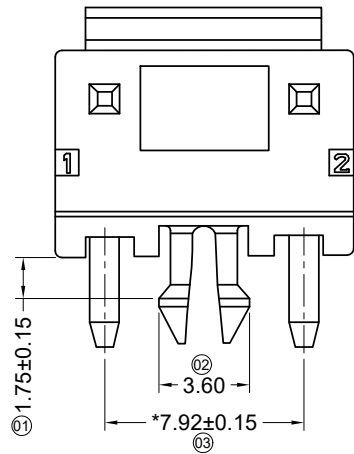


RoHS

This products can apply to the SWB Doc NO. QA-3-04-005 of Environmental&Material Management Rules



Recommended P.C.B Layout
General Tolerance±0.05



■ Specifications :

- Voltage rating: 250V AC / DC
- Current rating: 7A AC / DC
- Withstanding voltage: 1500V AC/minute
- Temperature range: -25°C~+85°C
- Insulation resistance: ≥1000MΩ
- Contact resistance: ≤10mΩ
- After environmental testing: ≤20mΩ

- Material(Pin): Brass
- Mates With SWB Housing: 9396H

9396 W R X-02 S1-XX SN XX-T

① ② ③ ④ ⑤ ⑥ ⑦ ⑧ ⑨ ⑩

- ① Series No.
- ② Category: W-Wafer
- ③ Connector Type: R- Right Angle 90°
- ④ Mouting Type: Blank-DIP
- ⑤ Row No.-Pin No Per Row: 02-02P
- ⑥ Special No.: S1-With Post and Locking Block
- ⑦ Material: N0-PA66 94V-0 ;PT-PBT 94V-0
- ⑧ Planting Code: SN-Bright Tin
- ⑨ Color: Blank-Natural Color ; Bk-Black
- ⑩ T-With Mark

| | | | | | | | | | | | | | | |
|------------|-----|---------------|----------------------|----------|----------|---|----------|--------|------------|---|-------|-------|-----|--------|
| | | | | | | 东莞市思索连接器有限公司 SWB CONNECTORS CO.,LTD | | | | PART NO. 9396WR-02S1-XXSN-X | | | | |
| | | | | | | APPROVAL CHECK DRAWN DATE | | | | TITLE 7.92 mm Crimp Style Connectors | | | | |
| 2020/03/23 | C | EN20200323001 | Update Drawing Frame | Alan qin | Robing | Robing | Jova Lau | Sylvia | 2007/05/03 | UNIT | SCALE | SHEET | REV | NUMBER |
| DATE | REV | ECN NO. | DESCRIPTION | MODIFY | APPROVAL | PROJECT | | | | mm | 1:1 | 1/1 | C | A-000 |