

RoHS

This products can apply to the SWB Doc NO. QA-3-04-005 of Environmental&Material Management Rules

■ Specifications :

- Voltage rating: 600V AC / DC
- Current rating: 9A AC / DC
- Withstanding voltage: 1500V AC/minute
- Temperature range: -25°C~+85°C
- Insulation resistance: ≥1000MΩ
- Contact resistance: ≤10mΩ
- After environmental testing: ≤20mΩ

9357 H F - 2*XX B - N2 XX
 ① ② ③ ④ ⑤ ⑥ ⑦

① Series No.

② Category: H-HSG

③ Welding Board Angle:

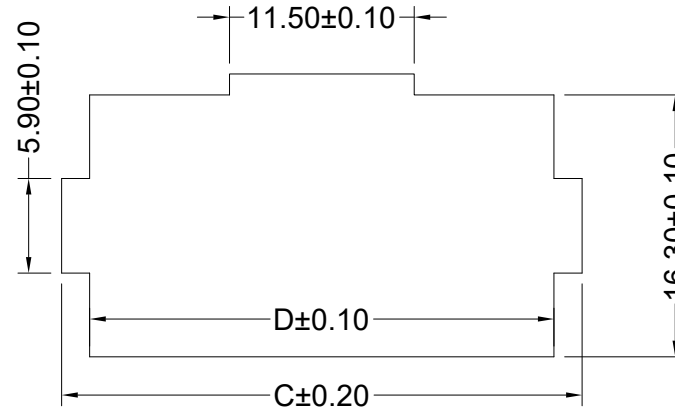
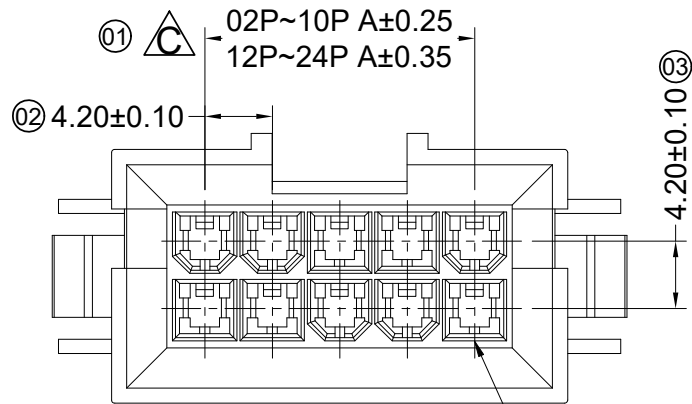
④ Blank-ordinary F-Female HGS

⑤ Row No.-Pin No.: 2*XX-Double row

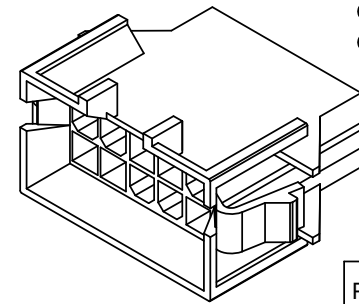
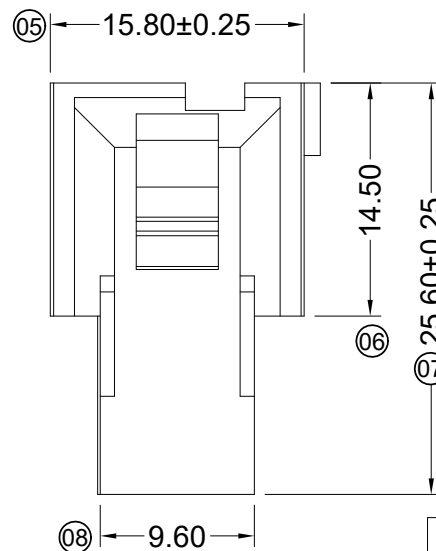
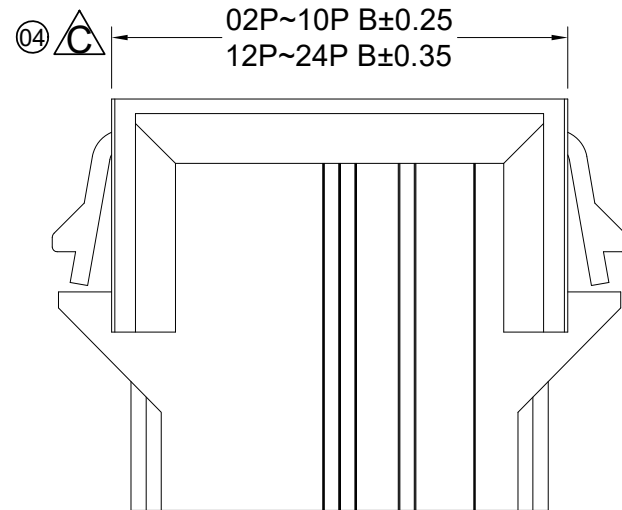
⑥ Plug the Pin & special No.: B-With a trough

⑦ Material: N2-PA66 94V-2

Color: Blank-natural color




Circuit 1



Poles	Dimensions (mm)			
	A	B	C	D
04	4.20	15.80	19.80	16.30
06	8.40	20.00	24.00	20.50
08	12.60	24.20	28.20	24.70
10	16.80	28.40	32.40	28.90
14	25.20	36.80	40.80	37.30
18	33.60	45.20	49.20	45.70
20	37.80	49.40	53.40	49.90
22	46.20	57.80	61.80	58.30

9357HF-2*XXB-N2	Nylon 66 UL 94V-2	9357TM	9357HM-B、9357WR-B
PART NO	Material	Suitable SWB Terminal	Mates With SWB Housing Or Wafer

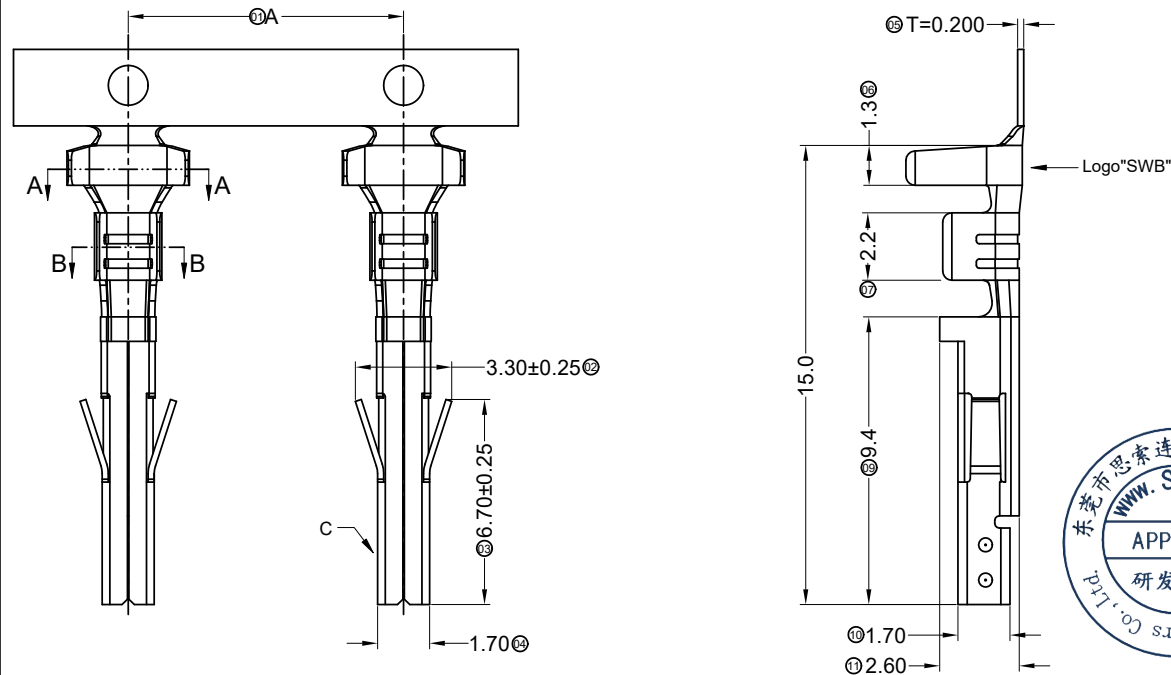
DATE	REV	ECN NO	DESCRIPTION	MODIFY	APPROVAL	PROJECT
2015.05.04	E		Modify the drawing frame format	Feng Ping	Bob Sun	GENERAL TOLERANCE
2013/11/30	D		Modify the drawing frame format			.X ±0.30
2013/07/18	C		Modify the drawing frame format, according to the physical correction shape tolerance			.XX ±0.20
						.XXX ±0.10
						X.° ±2°


东莞市思索连接器有限公司
SWB CONNECTORS CO.,LTD
 APPROVAL CHECK DRAWN DATE
 Allen 2013/11/29

PART NO. 9357HF-2*XXB-N2				
TITLE 4.20mm Crimp Style Connectors				
UNIT	SCALE	SHEET	REV	NUMBER
mm	1:1	1/1	E	A-018

RoHS

This products can apply to the SWB Doc NO. QA-3-04-005 of Environmental&Material Management Rules

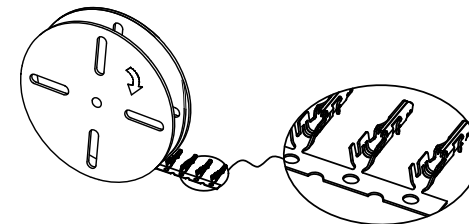


■ Specifications :

- Voltage rating: 600V AC / DC
- Current rating: 9A AC / DC
- Withstanding voltage: 1500V AC/minute
- Temperature range: -25°C~+85°C
- Insulation resistance: $\geq 1000M\Omega$
- Contact resistance: $\leq 10m\Omega$
- After environmental testing: $\leq 20m\Omega$

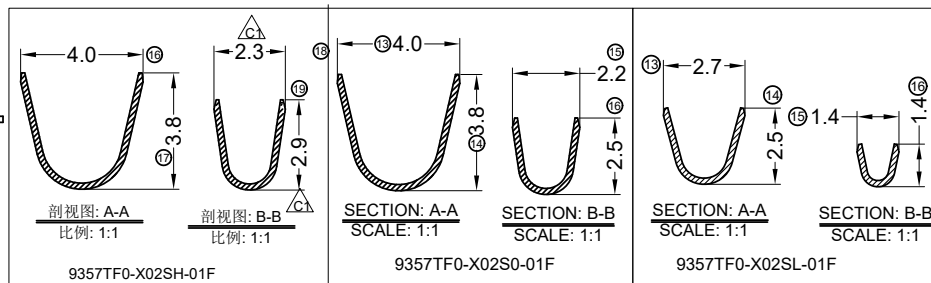
9357 T F 0 - X XX X X - 01 F
① ② ③ ④ ⑤ ⑥ ⑦ ⑧ ⑨ ⑩

- ① Series Number
- ② Category: T-terminal
- ③ Shape: F-Female
- ④ Shape: 0-Ordinary
- ⑤ Material: B-Brass P-Phosphor Bronze
- ⑥ Plating style: 02-Ni 30 μ " Sn 80 μ " Min
20-Ni 30 μ " Contact area G/F
- ⑦ Plating method: S-Stamping before plating
- ⑧ L-Ultra low foot, 0-Ordinary foot, H-Height foot
- ⑨ Water Code: 01
- ⑩ Special Code: F-Other connectors



Package way

SCALE 4:1



9357TF0-X02SL-01F	Barss or Phosphor Bronze	6.20mm Δ	24~26 AWG	1.5mm(Max)	9357HM
9357TF0-X02S0-01F		9.00mm	18~22 AWG	2.10mm(Max)	
9357TF0-X02SH-01F		9.00mm	16~18 AWG	3.10mm(Max)	
PART NO	Material	DIM A	Wire Range	Insulation O.D.	Used In SWB Housing

2022/05/25	C1	EN20220525001	Added height specifications	Zeng	Robing	GENERAL TOLERANCE
2020/03/26	C	EN20200326002	Update Drawing Frame, The Same ECR And ECN NO	Zeng	Robing	.X ± 0.30
2019/05/15	B	EN20190515002	Modify hole spacing of material belt Δ	Joshua	Smarm	.XX ± 0.20
DATE	REV	ECN ON.	DESCRIPTION	MODIFY	APPROVAL	.XXX ± 0.10
						X. $^{\circ}$ $\pm 2^{\circ}$
						PROJECT



东莞市思索连接器有限公司
SWB CONNECTORS CO.,LTD

PART NO. 9357TF0-X02SX-01F				
TITLE 4.20mm Crimp Style Connectors				
UNIT	SCALE	SHEET	REV	NUMBER
mm	1:1	1/1	C1	A-218

APPROVAL	CHECK	DRAWN	DATE
Smarm	Guo	Hai Lang	2018-06-28

RoHS

This products can apply to the SWB Doc NO. QA-3-04-005 of Environmental&Material Management Rules

■ Specifications :

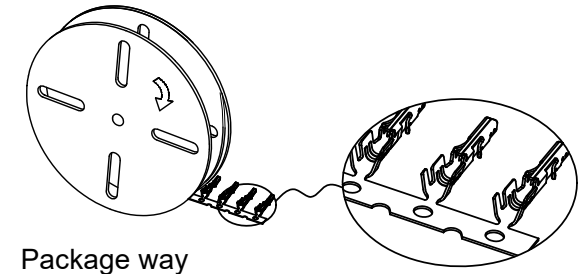
- Voltage rating: 600V AC / DC
- Current rating: 12.5A AC / DC(16 AWG)
- Withstanding voltage: 1500V AC/minute
- Temperature range: -25°C~+85°C
- Insulation resistance:≥1000MΩ
- Contact resistance: ≤10mΩ
- After environmental testing: ≤20mΩ
- Used In SWB Housing:9357HM

9357 T X F -H XX X-X

① ② ③ ④ ⑤ ⑥ ⑦ ⑧

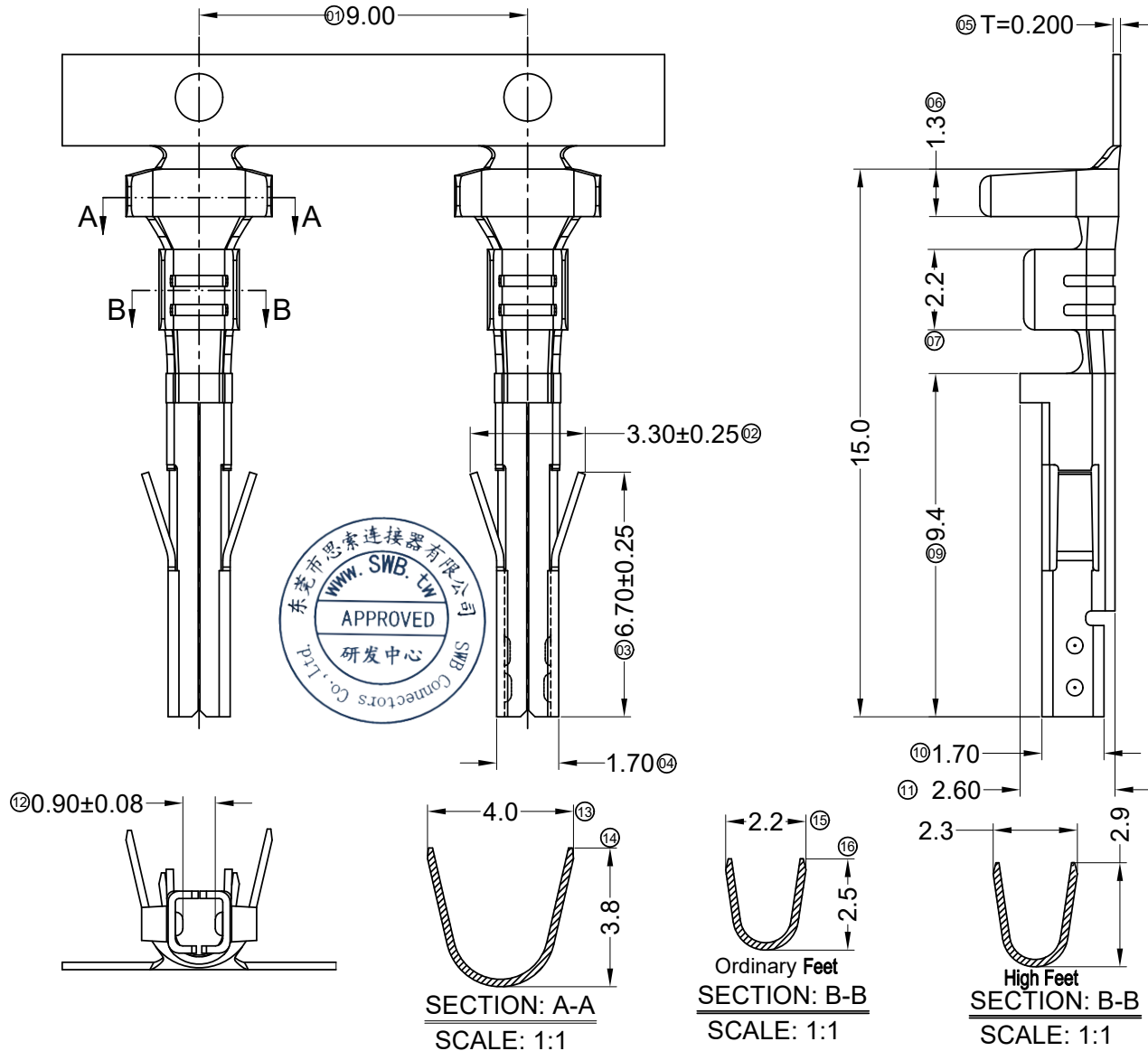
- ① Series Number
- ② Category: T-terminal
- ③ Special NO: Blank-Ordinary Feet ; H-High Feet;
- ④ Shape: F-Female
- ⑤ Material: H-High conductivity copper
- ⑥ Plating style:
SN-60u" Ni;120u"Sn Min.
G01-30u" Min Ni;Contact area Gold Flash
G03-30u" Min Ni;Contact area gold 3u"
- ⑦ Plating method: Blank-Stamping before plating
- ⑧ Mold No./Mark/Special No.

9357TF-HXX	18~22AWG	2.10mm (Max)
9357THF-HXX	16~18AWG	3.10mm (Max)
P/N	Wire Range	Insulation O.D.



Package way

SCALE 4:1



2022/05/23	B1	EN20220523001	Add High Feet	Zeng	Robing
2020/03/26	B	EN20200326002	Update Drawing Frame	Zeng	Robing
DATE	REV	ECN NO	DESCRIPTION	MODIFY	APPROVAL

GENERAL TOLERANCE				PART NO. 9357TXF-HXXX			
.X ±0.30				TITLE 4.20mm Crimp Style Connectors			
.XX ±0.20				UNIT mm			
.XXX ±0.10				SCALE 1:1			
X° ±2°				SHEET 1/1			
PROJECT				REV B1			
APPROVAL Smark				NUMBER A-218			
CHECK Joshua				DATE 2016/03/22			
DRAWN Jason							

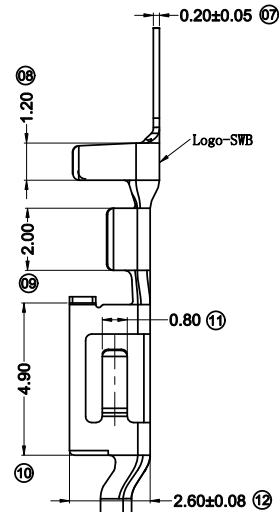
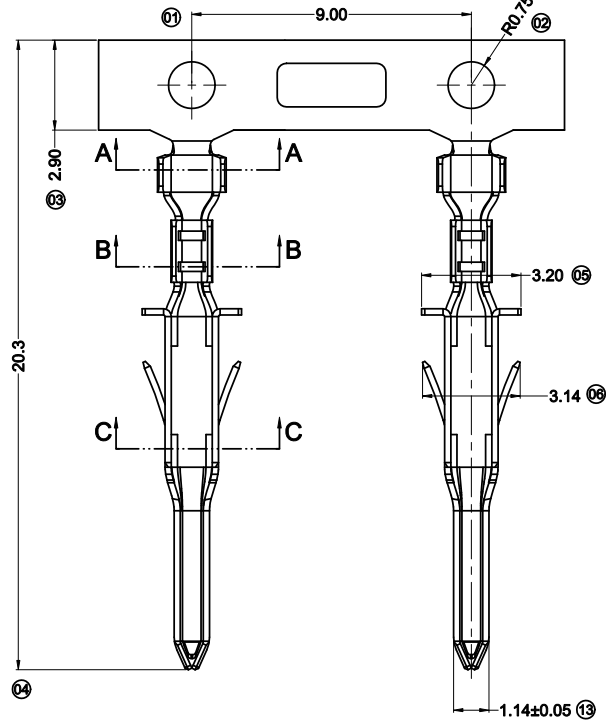


东莞市思索连接器有限公司
SWB CONNECTORS CO.,LTD

APPROVAL	CHECK	DRAWN	DATE
Smark	Joshua	Jason	2016/03/22

RoHS

This products can apply to the SWB Doc NO. QA-3-04-005 of Environmental&Material Management Rules

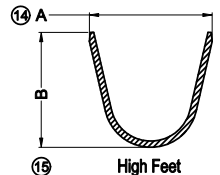


■ Specifications :

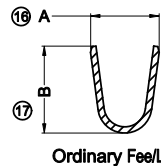
- Voltage rating: 600V AC / DC
- Current rating: 9A Max AC / DC
- Withstanding voltage: 1500V AC/minute
- Temperature range: -25°C~+85°C
- Insulation resistance: ≥1000MΩ
- Contact resistance: ≤10mΩ
- After environmental testing: ≤20mΩ

9357 T M-X SN X-X

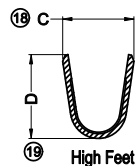
- ① ② ③ ④ ⑤ ⑥ ⑦
- ① Series No.
 - ② Category: T-Terminal
 - ③ Connector type: M-Male Terminal
 - ④ Material: B-Brass; P-Phosphor Bronze
 - ⑤ Plating code: SN-Bright Tin Plating
 - ⑥ Plating Method :
Blank-Stamping before Plating
 - ⑦ Special N0: Blank-Ordinary Feet
L-Low Feet ; H-High Feet;



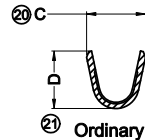
SECTION: A-A
SCALE: 1:1



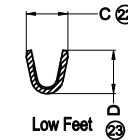
SECTION: A-A
SCALE: 1:1



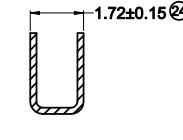
SECTION: B-B
SCALE: 1:1



SECTION: B-B
SCALE: 1:1



SECTION: B-B
SCALE: 1:1



SECTION: C-C
SCALE: 1:1

9357TM-XXX-H	AWG#16~18 (0.8~1.00mm ²)	2.1mm(Max)	3.95	3.70	2.30	2.70	9357HF
9357TM-XXX	AWG#20~22 (0.5~0.35mm ²)	1.50mm(Max)	2.20	2.80	1.90	1.85	
9357TM-XXX-L	AWG#24~26 (0.22~0.13mm ²)	1.30mm(Max)	2.20	2.80	1.34	1.40	

料号	线芯 O.D	绝缘 O.D	DIM a	DIM b	DIM c	DIM d	Used In SWB Housing
----	--------	--------	-------	-------	-------	-------	---------------------



DATE	REV	ECN NO	DESCRIPTION	MODIFY	APPROVAL
------	-----	--------	-------------	--------	----------

GENERAL TOLERANCE	
.X	±0.30
.XX	±0.20
.XXX	±0.10
X.°	±2°
PROJECT	

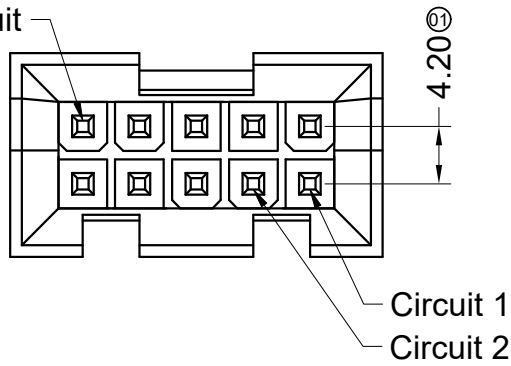
东莞市思索连接器有限公司 SWB CONNECTORS CO.,LTD				APPROVAL	CHECK	DRAWN	DATE
Larry				/	Zeng	2021/12/21	

PART NO. 9357TM-XSN-X				
TITLE 4.20 mm Crimp Style Connectors				
UNIT	SCALE	SHEET	REV	NUMBER
mm	1:1	1/1	A0	A-000

RoHS

This products can apply to the SWB Doc NO. QA-3-04-005 of Environmental&Material Management Rules

Last Circuit



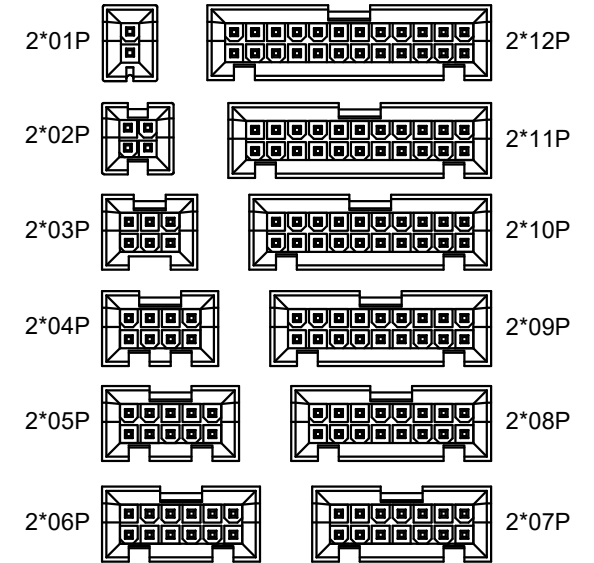
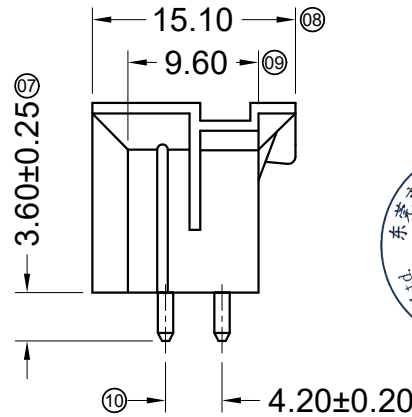
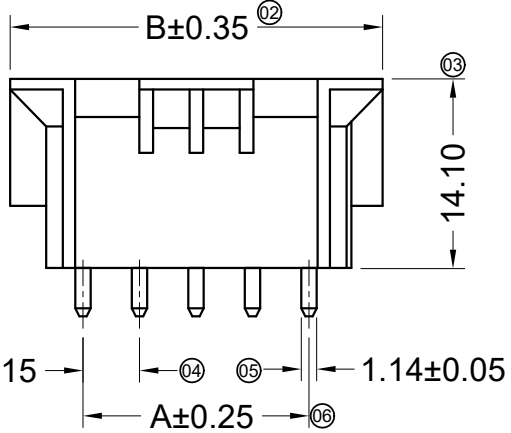
Specifications :

- Voltage rating: 600V AC / DC
- Current rating: 9A AC / DC
- Withstanding voltage: 1500V AC/minute
- Temperature range: -25°C~+85°C
- Insulation resistance: ≥1000MΩ
- Contact resistance: ≤10mΩ
- After environmental testing: ≤20mΩ
- Material (Pin) : Brass

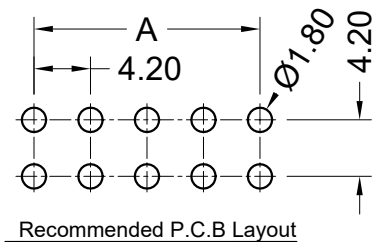
9357 W V X-2*XX B-XX SN XX

① ②③④ ⑤ ⑥ ⑦ ⑧ ⑨

- ① Series No.
- ② Category: W-wafer
- ③ Connector Type: V-Straight 180°
- ④ Mouting Type: Blank-DIP
- ⑤ Row No.-Pin No.: 2*XX-2*01P~2*12P
- ⑥ Special No.: B-Arrange ushering
- ⑦ Material: N0-PA66 94V-0 ;N2-PA66 94V-2
- ⑧ Plating Code: SN-Bright tin plating ;
- ⑨ Color: Blank-natural color



Sketch map of Pin hole



Poles	Dimensions (mm)		Poles	Dimensions (mm)	
	A	B		A	B
2*01	/	10.80	2*07	25.20	36.00
2*02	4.20	15.00	2*08	29.40	40.20
2*03	8.40	19.20	2*09	33.60	44.40
2*04	12.60	23.40	2*10	37.80	48.60
2*05	16.80	27.60	2*11	42.00	52.80
2*06	21.00	31.80	2*12	46.20	57.00

					<p>GENERAL TOLERANCE</p> <p>.X ±0.30</p> <p>.XX ±0.20</p> <p>.XXX ±0.10</p> <p>X.° ±2°</p>				<p>APPROVAL</p> <p>Robing</p>				<p>CHECK</p> <p>Joshua</p>				<p>DRAWN</p> <p>sylvia</p>				<p>DATE</p> <p>2020/08/07</p>			
					<p>PROJECT</p>				<p>APPROVAL</p>				<p>CHECK</p>				<p>DRAWN</p>				<p>DATE</p>			
DATE	REV	ECN NO.	DESCRIPTION	MODIFY	APPROVAL																			



东莞市思索连接器有限公司
SWB CONNECTORS CO.,LTD

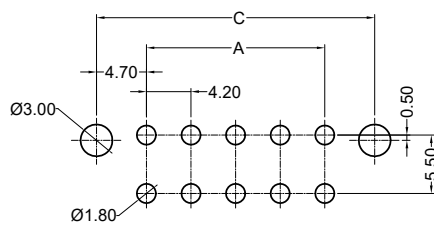
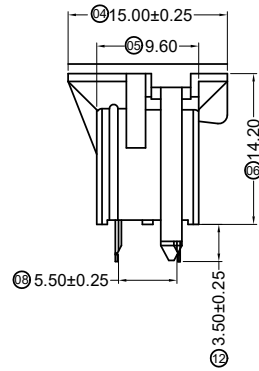
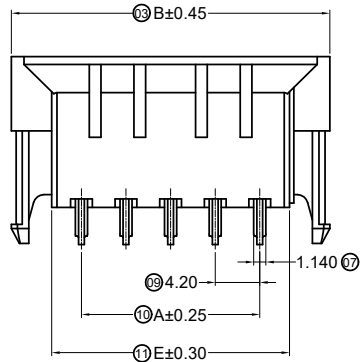
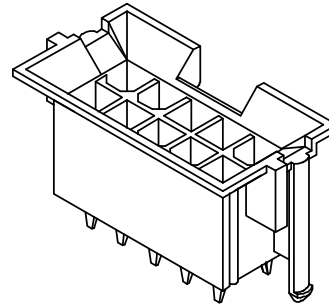
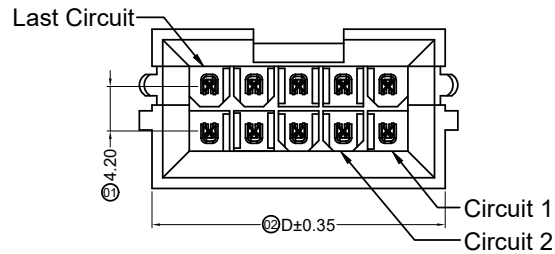
PART NO.
9357WV-2*XXB-XXSN

TITLE
2.00mm Crimp Style Connector

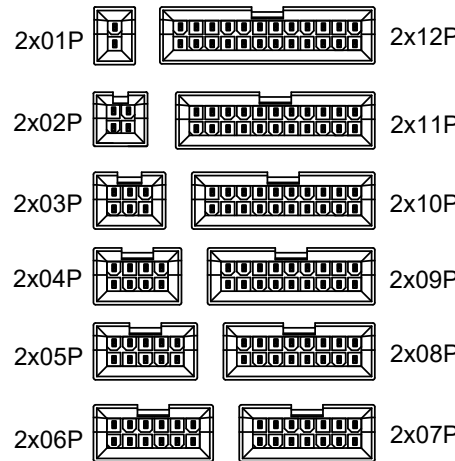
UNIT	SCALE	SHEET	REV	NUMBER
mm	1:1	1/1	A	A-007

RoHS

This products can apply to the SWB Doc NO. QA-3-04-005 of Environmental&Material Management Rules



Recommended P.C.B Layout
General Tolerance±0.05



CIRCUIT SIZE LAYOUT

- Specifications :
- Voltage rating: 600V AC / DC
 - Current rating: 7A AC / DC
 - Withstanding voltage: 1500V AC/minute
 - Temperature range: -25°C~+85°C
 - Insulation resistance: ≥1000MΩ
 - Contact resistance: ≤10mΩ
 - After environmental testing: ≤20mΩ

- Material(Pin):Brass
- Mates With SWB Housing:9357HM-2*XX/9357HM-2*XXB

9357 W V X-2*XX HB-XX SN XX

① ② ③ ④ ⑤ ⑥ ⑦ ⑧ ⑨

- ① Series No.
- ② Category: W-wafer
- ③ Connector type: V- Straight 180°
- ④ Mouting type: Blank-DIP
- ⑤ Row No.-Pin No per row: 2*XX-2*02P~2*12P
- ⑥ Special No.:
HB-The hollow needle with positioning column arrange ushering;
- ⑦ Material: N0-PA66 94V-0 ; N2-PA66 94V-2 LP-LCP 94V-0
- ⑧ Plating code: SN-Bright tin plating ;
- ⑨ Color: Blank-natural color

Part No.	Dimensions(mm)				
	A	B	C	D	E
2x02P	4.20	17.40	13.60	15.00	9.80
2x03P	8.40	21.60	17.80	19.20	14.00
2x04P	12.60	25.80	22.00	23.40	18.20
2x05P	16.80	30.00	26.20	27.60	22.40
2x06P	21.00	34.20	30.40	31.80	26.60
2x07P	25.20	38.40	34.60	36.00	30.80
2x08P	29.40	42.60	38.80	40.20	35.00
2x09P	33.60	46.80	43.00	44.40	39.20
2x10P	37.80	51.00	47.20	48.60	43.40
2x11P	42.00	55.20	51.40	52.80	47.60
2x12P	46.20	59.40	55.60	57.00	51.80

					GENERAL TOLERANCE		东莞市思索连接器有限公司 SWB CONNECTORS CO.,LTD				PART NO. 9357WV-2*XXHB-XXSN					
					.X ±0.30						TITLE 4.20 mm Crimp Style Connectors					
					.XX ±0.20											
					.XXX ±0.10						APPROVAL CHECK DRAWN DATE					
2020/03/26	B	EN20200326002	Update Drawing Frame	Zeng	Robing	X° ±2°		Robing	Zeng	Mandy	2018/09/12	UNIT	SCALE	SHEET	REV	NUMBER
DATE	REV	ECN NO	DESCRIPTION	MODIFY	APPROVAL	PROJECT						mm	1:1	1/1	B	A-007

RoHS

This products can apply to the SWB Doc NO. QA-3-04-005 of Environmental&Material Management Rules

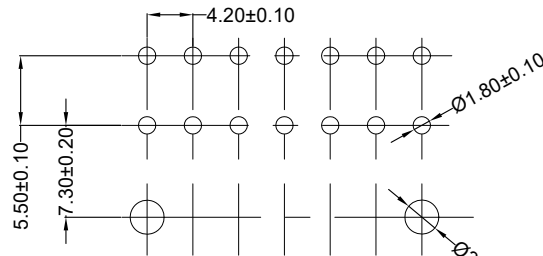
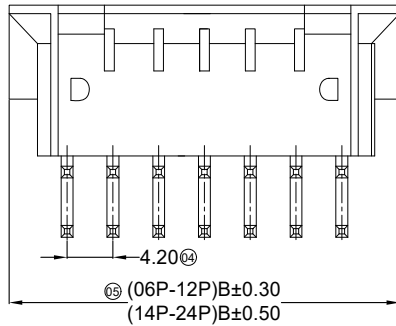
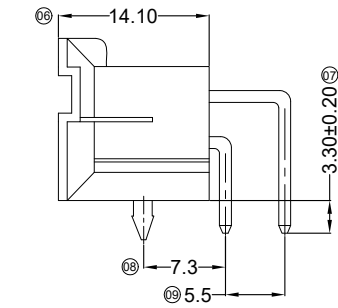
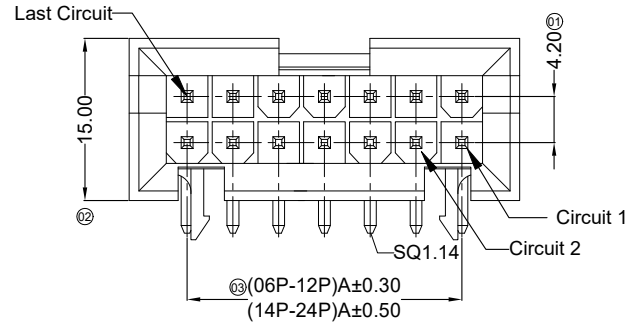
■ Specifications :

- Voltage rating: 600V AC / DC
- Current rating: 9A AC / DC
12.5A AC / DC(16 AWG)-High conductive Brass
- Withstanding voltage: 1500V AC/minute
- Temperature range: -25°C~+85°C
- Insulation resistance: ≥1000MΩ
- Contact resistance: ≤10mΩ
- After environmental testing: ≤20mΩ

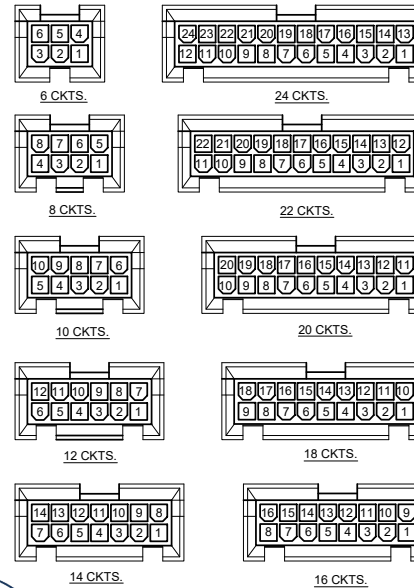
9357 W R X-2*XX XX-XX SN XX

① ② ③ ④ ⑤ ⑥ ⑦ ⑧ ⑨

- ① Series No.
- ② Category: W-wafer
- ③ Welding Board Angle: R- Right Angle 90°
- ④ Welding Way: Blank-DIP
- ⑤ Row No.-Pin No.: 2*XX-2*03P~2*12P
- ⑥ Plug the Pin & Special No.:
B-Arrange ushering with positioning column
BH-Arrange ushering with positioning column(High conductive Brass)
- ⑦ Material: N0-PA66 94V-0 ;N2-PA66 94V-2
- ⑧ Planting Category: SN-Bright tin plating ;
- ⑨ Color: Blank-natural color



P.C.B LAYOUT



KEY HOLD CIRCUIT SIZE LAYOUT

Poles	Dimensions(mm)	
	A	B
2*03	8.40	19.20
2*04	12.60	23.40
2*05	16.80	27.60
2*06	21.00	31.80
2*07	25.20	36.00
2*08	29.40	40.20
2*09	33.60	44.40
2*10	37.80	48.60
2*11	42.00	52.80
2*12	46.20	57.00



9357WR-2*XXBX-N0SN	Nylon 66 UL 94V-0	Brass	Tin-Plated	9357HM-2*XXB
9357WR-2*XXBX-N2SN	Nylon 66 UL 94V-2			9357HM-2*XX
PART NO	Material	Material(Pin)	Finish(Pin)	Mates With SWB Housing

DATE	REV	ECN NO	DESCRIPTION	MODIFY	APPROVAL	PROJECT	APPROVAL	CHECK	DRAWN	DATE	UNIT	SCALE	SHEET	REV	NUMBER	
2015.12.07	D		Modify TOLERANCE	Wuxiaotao	Jova	GENERAL TOLERANCE	东莞市思索连接器有限公司 SWB CONNECTORS CO.,LTD	APPROVAL	CHECK	DRAWN	DATE	PART NO. 9357WR-2*XXBX-XXSN				
2015.05.04	C		Modify the drawing frame format	Feng Ping	Bob Sun	.X ±0.30						TITLE 4.20mm Crimp Style Connectors				
						.XX ±0.20						UNIT mm				
						.XXX ±0.10						SCALE 1:1				
						X.° ±2°	SHEET 1/1									
						PROJECT	REV D									
							NUMBER A-007									