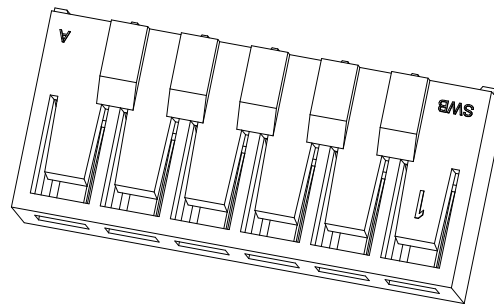
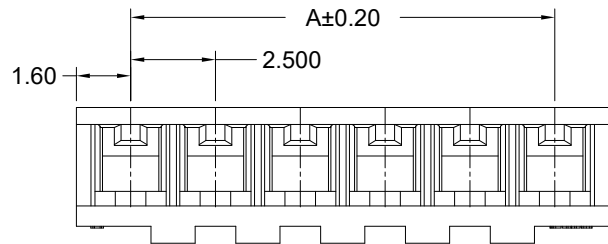
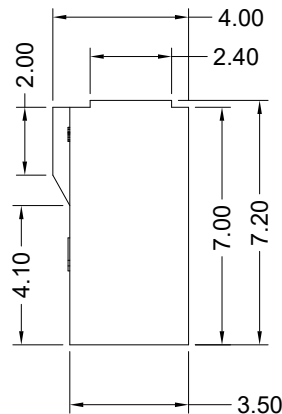
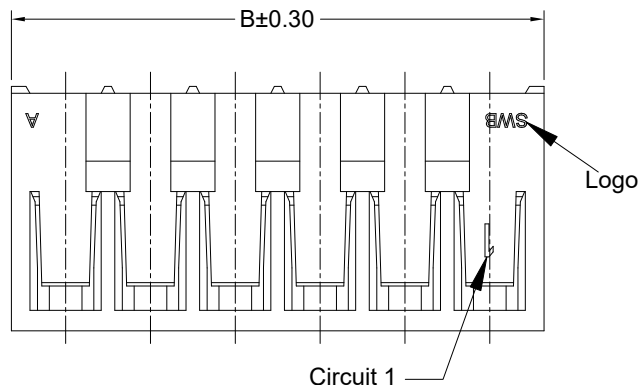


RoHS

This products can apply to the SESO Doc NO. QA-3-04-005 of Environmental&Material Management Rules



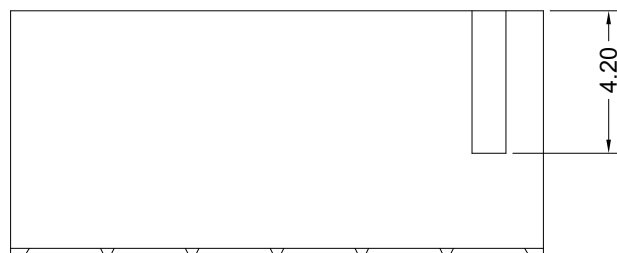
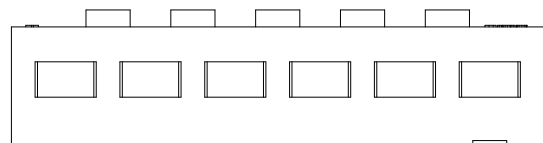
- Specifications :
- Voltage rating: 250V AC / DC
  - Current rating: 3A AC / DC
  - Withstanding voltage: 800V AC/minute
  - Temperature range: -40°C~+105°C
  - Insulation resistance: ≥1000MΩ
  - Suitable SESO Terminal: 9026TXV



9026 H V-XX X-N0 NC

① ② ③ ④ ⑤ ⑥ ⑦

- ① Series No.
- ② Category: H-HSG
- ③ Connector type: V-180°
- ④ Row No.-Pin No per row: XX-02P~15P
- ⑤ Special No.:
- ⑥ Material: N0-PA66 UL 94V-0
- ⑦ Color: NC-Natural Color

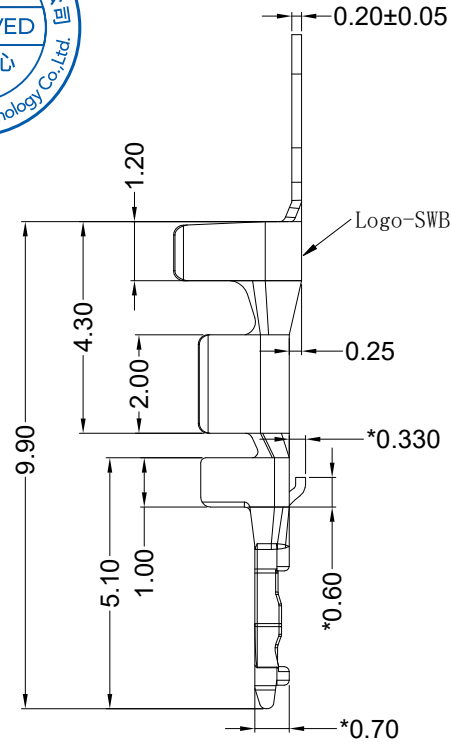
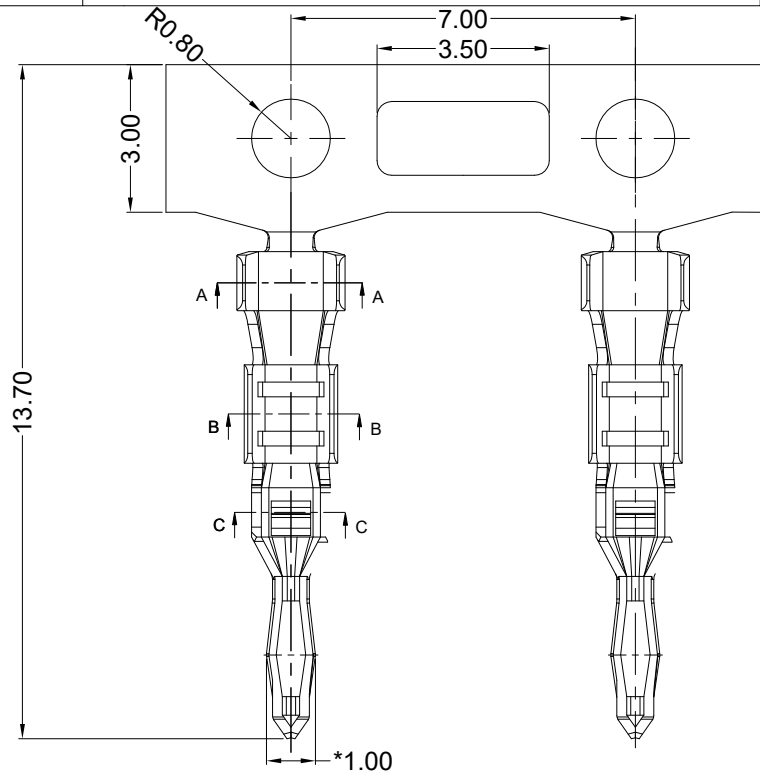


| Poles | Dimensions (mm) |       | Poles | Dimensions(mm) |       |
|-------|-----------------|-------|-------|----------------|-------|
|       | A               | B     |       | A              | B     |
| 02    | 2.50            | 5.70  | 10    | 22.50          | 25.70 |
| 03    | 5.00            | 8.20  | 11    | 25.00          | 28.20 |
| 04    | 7.50            | 10.70 | 12    | 27.50          | 30.70 |
| 05    | 10.00           | 13.20 | 13    | 30.00          | 33.20 |
| 06    | 12.50           | 15.70 | 14    | 32.50          | 35.70 |
| 07    | 15.00           | 18.20 | 15    | 35.00          | 38.20 |
| 08    | 17.50           | 20.70 |       |                |       |
| 09    | 20.00           | 23.20 |       |                |       |

|           |     |         |                      |        |                   |          |        |       |                               |                     |  |  |  |  |  |
|-----------|-----|---------|----------------------|--------|-------------------|----------|--------|-------|-------------------------------|---------------------|--|--|--|--|--|
|           |     |         |                      |        | GENERAL TOLERANCE |          |        |       | PART NO.                      |                     |  |  |  |  |  |
|           |     |         |                      |        | .X ±0.30          |          |        |       | 9026HV-XX-N0NC                |                     |  |  |  |  |  |
|           |     |         |                      |        | .XX ±0.20         |          |        |       | TITLE                         |                     |  |  |  |  |  |
|           |     |         |                      |        | .XXX ±0.10        |          |        |       | 2.50mm Crimp Style Connectors |                     |  |  |  |  |  |
|           |     |         |                      |        | X.° ±2°           |          |        |       | UNIT SCALE SHEET REV NUMBER   |                     |  |  |  |  |  |
| 2023/8/17 | A1  | /       | Update Drawing Frame | Zhou   | Larry             | APPROVAL | CHECK  | DRAWN | DATE                          | mm 1:1 1/1 A1 A-000 |  |  |  |  |  |
| DATE      | REV | ECN NO. | DESCRIPTION          | MODIFY | APPROVAL          | PROJECT  | Robing | /     | Zeng                          | 2018/08/16          |  |  |  |  |  |

RoHS

This products can apply to the SESO Doc NO. QA-3-04-005 of Environmental&Material Management Rules



Specifications :

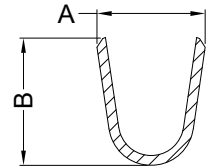
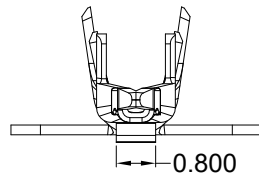
- Voltage rating: 250V AC / DC
- Current rating: 3A AC / DC
- Withstanding voltage: 800V AC/minute
- Temperature range: -40°C~+105°C
- Insulation resistance: ≥1000MΩ

- Wire Size: AWG#20~26 (0.5~0.13m<sup>2</sup>)
- Insulation O.D.: 1.50mm (Max)
- Used In SESO Housing: 9026HV

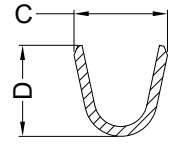
9026 T X V-X SN X

① ② ③ ④ ⑤ ⑥ ⑦

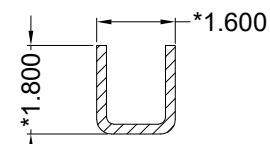
- ① Series Number
  - ② Category: T-terminal
  - ③ Hape: L-Low Feet ; H-High Feet
  - ④ Hape: V-Straight 180°
  - ⑤ Material: B-Brass ; P-Phosphor bronze
  - ⑥ Plating style: SN-Bright tin plating
  - ⑦ Plating method: Blank-Stamping before plating
- Mold No./Mark/Special No. :



SECTION A-A  
SCALE 1:1

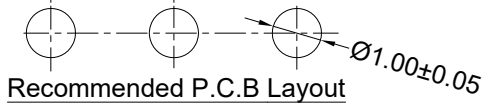


SECTION B-B  
SCALE 1:1



SECTION C-C  
SCALE 1:1

2.50±0.05



Recommended P.C.B Layout  
General Tolerance ±0.05 T=1.60mm

|             |                                      |                 |       |       |       |       |
|-------------|--------------------------------------|-----------------|-------|-------|-------|-------|
| 9026THV-XSN | AWG#20~22<br>0.50~0.35m <sup>2</sup> | 1.50mm (Max)    | 2.20  | 2.60  | 1.90  | 1.85  |
| 9026TLV-XSN | AWG#24~26<br>0.22~0.13m <sup>2</sup> | 1.30mm (Max)    | 2.20  | 2.60  | 1.30  | 1.40  |
| P/N         | Wire Range                           | Insulation O.D. | DIM a | DIM b | DIM c | DIM d |

|                   |     |         |                      |        |          |
|-------------------|-----|---------|----------------------|--------|----------|
| GENERAL TOLERANCE |     |         |                      |        |          |
| .X ±0.30          |     |         |                      |        |          |
| .XX ±0.20         |     |         |                      |        |          |
| .XXX ±0.10        |     |         |                      |        |          |
| X° ±2°            |     |         |                      |        |          |
| PROJECT           |     |         |                      |        |          |
|                   |     |         |                      |        |          |
| 2023/8/17         | A1  | /       | Update Drawing Frame | Zhou   | Larry    |
| DATE              | REV | ECN NO. | DESCRIPTION          | MODIFY | APPROVAL |

**SMS** 东莞市思索技术股份有限公司  
Dongguan SESO Technology Co.,Ltd.

APPROVAL: Robing  
CHECK: /  
DRAWN: Zeng  
DATE: 2021/11/22

|                               |       |       |     |        |
|-------------------------------|-------|-------|-----|--------|
| PART NO.                      |       |       |     |        |
| 9026TXV-XSN                   |       |       |     |        |
| TITLE                         |       |       |     |        |
| 2.50mm Crimp Style Connectors |       |       |     |        |
| UNIT                          | SCALE | SHEET | REV | NUMBER |
| mm                            | 1:1   | 1/1   | A1  | A-000  |