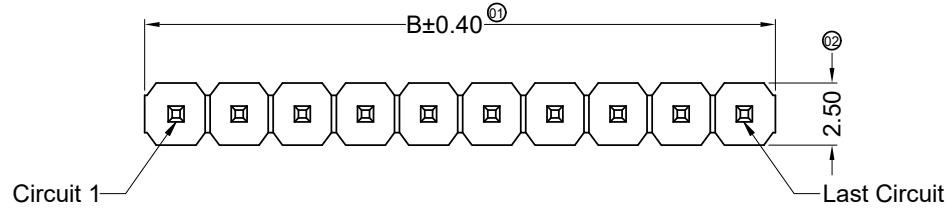


RoHS

This products can apply to the SWB Doc NO. QA-3-04-005 of Environmental&Material Management Rules



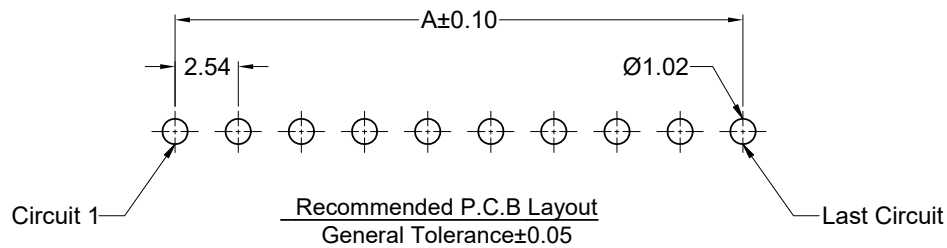
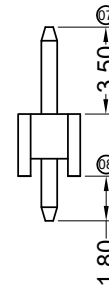
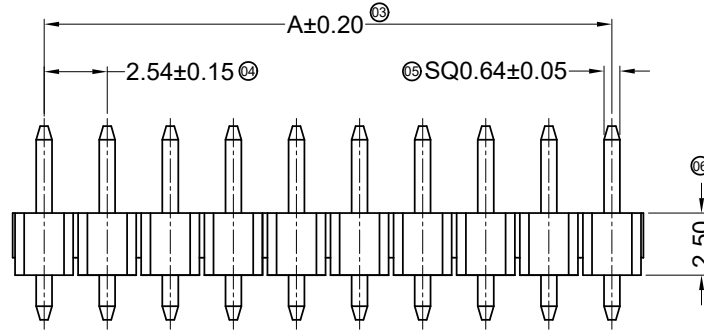
Specifications :

- Voltage rating: 250V AC / DC
- Current rating: 3A AC / DC
- Withstanding voltage: 800V AC/minute
- Temperature range: -40°C~+105°C
- Insulation resistance: ≥1000MΩ
- Contact resistance: ≤20mΩ
- After environmental testing: ≤30mΩ
- Material(Pin): Brass
- Mates With SWB Female Header: 6501FX

6501 W V X - XX X - 6T V01 XX- 02

① ② ③ ④ ⑤ ⑥ ⑦ ⑧ ⑨ ⑩

- ① Series No.
- ② Category: W-Wafer
- ③ Connector Type: V- 180°
- ④ Mouting Type: Blank-DIP
- ⑤ Row No.-Pin No Per Row: XX-02P~40P
- ⑥ Special No.: Blank-ordinary
- ⑦ Material: 6T-PA6T 94V-0
- ⑧ Plating Code: V01-Gold Flash
- ⑨ Color: Blank-Black Color
- ⑩ 02-3.50/2.50/1.80

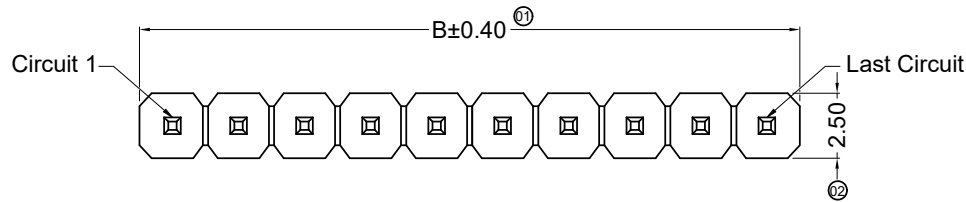


Poles	Dimensions(mm)		Poles	Dimensions(mm)	
	A	B		A	B
02	2.54	5.08	22	53.34	55.88
03	5.08	7.62	23	55.88	58.42
04	7.62	10.16	24	58.42	60.96
05	10.16	12.70	25	60.96	63.50
06	12.70	15.24	26	63.50	66.04
07	15.24	17.78	27	66.04	68.58
08	17.78	20.32	28	68.58	71.12
09	20.32	22.86	29	71.12	73.66
10	22.86	25.40	30	73.66	76.20
11	25.40	27.94	31	76.20	78.74
12	27.94	30.48	32	78.74	81.28
13	30.48	33.02	33	81.28	83.82
14	33.02	35.56	34	83.82	86.36
15	35.56	38.10	35	86.36	88.90
16	38.10	40.64	36	88.90	91.44
17	40.64	43.18	37	91.44	93.98
18	43.18	45.72	38	93.98	96.52
19	45.72	48.26	39	96.52	99.06
20	48.26	50.80	40	99.06	101.60
21	50.80	53.34			

		2020/03/16	B	EN20200316005	Update Drawing Frame	东莞市思索连接器有限公司 SWB CONNECTORS CO.,LTD				PART NO. 6501WV-XX-6TV01-02				
						SWB CONNECTORS CO.,LTD APPROVAL CHECK DRAWN DATE				TITLE 2.54mm Pin Header connectors				
2020/03/16	B	EN20200316005	Update Drawing Frame	Mandy	Robing	Robing	Alan qin	Mandy	2019/09/04	UNIT	SCALE	SHEET	REV	NUMBER
DATE	REV	ECN NO.	DESCRIPTION	MODIFY	APPROVAL	PROJECT				mm	1 : 1	1/1	B	A-268

RoHS

This products can apply to the SWB Doc NO. QA-3-04-005 of Environmental&Material Management Rules



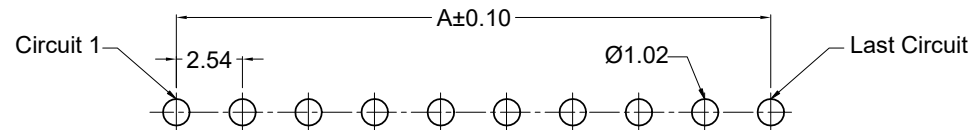
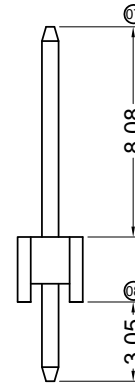
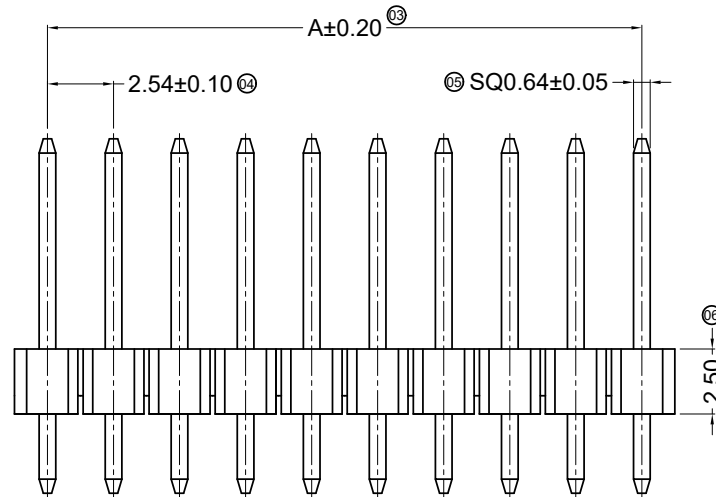
■ Specifications:

- Voltage rating: 250V AC / DC
- Current rating: 3A AC / DC
- Withstanding voltage: 800V AC/minute
- Temperature range: -40°C~+105°C
- Insulation resistance: ≥1000MΩ
- Contact resistance: ≤20mΩ
- After environmental testing: ≤30mΩ
- Material(Pin): Brass
- Mates With SWB Female Header: 6501FX

6501 W V X- XX X - 6T V01 XX-07

① ② ③ ④ ⑤ ⑥ ⑦ ⑧ ⑨ ⑩

- ① Series No.
- ② Category: W-Wafer
- ③ Connector Type: V- 180°
- ④ Mouting Type: Blank-DIP
- ⑤ Row No.-Pin No Per Row: XX-02P~40P
- ⑥ Special No.: Blank-Ordinary
- ⑦ Material: 6T-PA6T 94V-0;
- ⑧ Plating Code: V01- Gold Flash
- ⑨ Color: Blank-Black Color
- ⑩ 07-8.08/2.50/3.05



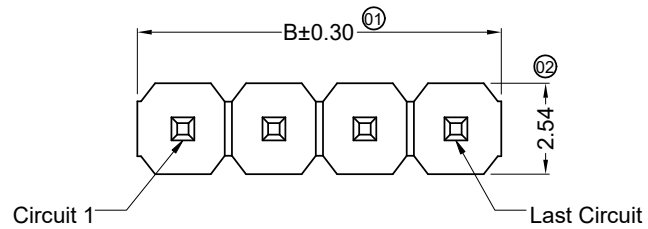
Recommended P.C.B Layout
General Tolerance±0.05

Poles	Dimensions (mm)		Poles	Dimensions (mm)		Poles	Dimensions (mm)	
	A	B		A	B		A	B
01	--	2.54	15	35.56	38.10	29	71.12	73.66
02	2.54	5.08	16	38.10	40.64	30	73.66	76.20
03	5.08	7.62	17	40.64	43.18	31	76.20	78.74
04	7.62	10.16	18	43.18	45.72	32	78.74	81.28
05	10.16	12.70	19	45.72	48.26	33	81.28	83.82
06	12.70	15.24	20	48.26	50.80	34	83.82	86.36
07	15.24	17.78	21	50.80	53.34	35	86.36	88.90
08	17.78	20.32	22	53.34	55.88	36	88.90	91.44
09	20.32	22.86	23	55.88	58.42	37	91.44	93.98
10	22.86	25.40	24	58.42	60.96	38	93.98	96.52
11	25.40	27.94	25	60.96	63.50	39	96.52	99.06
12	27.94	30.48	26	63.50	66.04	40	99.06	101.60
13	30.48	33.02	27	66.04	68.58			
14	33.02	35.56	28	68.58	71.12			

					GENERAL TOLERANCE .X ±0.30 .XX ±0.20 .XXX ±0.10 X.° ±2°				东莞市思索连接器有限公司 SWB CONNECTORS CO.,LTD				PART NO. 6501WV-XX-6TV01-07								
					APPROVAL Robing				CHECK Alan Qin				DRAWN Mandy				DATE 2020/03/16				
					PROJECT 								TITLE 2.54 mm Pin Header connectors								
DATE	REV	ECN NO.	DESCRIPTION	MODIFY	APPROVAL					UNIT	SCALE	SHEET	REV	NUMBER							
										mm	1:1	1/1	A	A-268							

RoHS

This products can apply to the SWB Doc NO. QA-3-04-005 of Environmental&Material Management Rules

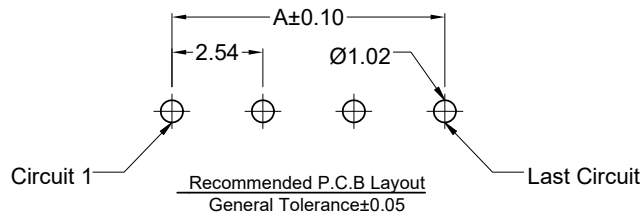
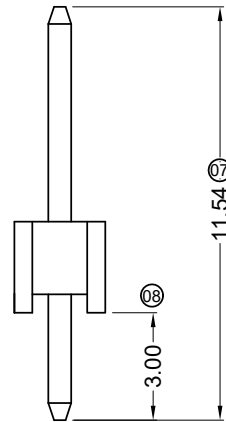
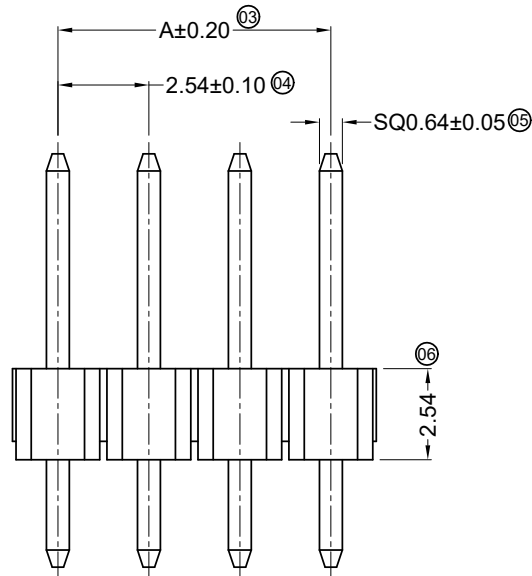


■ Specifications :

- Voltage rating: 250V AC / DC
- Current rating: 3A AC / DC
- Withstanding voltage: 800V AC/minute
- Temperature range: -40°C~+105°C
- Insulation resistance: ≥1000MΩ
- Contact resistance: ≤20mΩ
- After environmental testing: ≤30mΩ
- Material(Pin): Brass
- Mates With SWB Female Header: 6501FX

6501 W V X -XX X - 6T V01 XX - Q
 ① ② ③ ④ ⑤ ⑥ ⑦ ⑧ ⑨ ⑩

- ① Series No.
- ② Category: W-wafer
- ③ Connector Type: V- 180°
- ④ Mounting Type: Blank-DIP
- ⑤ Row No.-Pin No Per Row: XX-02P~40P
- ⑥ Special No.: Blank-Ordinary
- ⑦ Material: 6T-PA6T 94V-0
- ⑧ Plating Code: V01-Gold Flash
- ⑨ Color: Blank-Black Color
- ⑩ Q-6.00/2.54/3.00



Poles	Dimensions (mm)		Poles	Dimensions (mm)	
	A	B		A	B
01	--	2.54	21	50.80	53.34
02	2.54	5.08	22	53.34	55.88
03	5.08	7.62	23	55.88	58.42
04	7.62	10.16	24	58.42	60.96
05	10.16	12.70	25	60.96	63.50
06	12.70	15.24	26	63.50	66.04
07	15.24	17.78	27	66.04	68.58
08	17.78	20.32	28	68.58	71.12
09	20.32	22.86	29	71.12	73.66
10	22.86	25.40	30	73.66	76.20
11	25.40	27.94	31	76.20	78.74
12	27.94	30.48	32	78.74	81.28
13	30.48	33.02	33	81.28	83.82
14	33.02	35.56	34	83.82	86.36
15	35.56	38.10	35	86.36	88.90
16	38.10	40.64	36	88.90	91.44
17	40.64	43.18	37	91.44	93.98
18	43.18	45.72	38	93.98	96.52
19	45.72	48.26	39	96.52	99.06
20	48.26	50.80	40	99.06	101.60

DATE	REV	ECN NO.	DESCRIPTION	MODIFY	APPROVAL	PROJECT
2020/03/16	G	EN20200316005	Update Drawing Frame	Mandy	Robing	GENERAL TOLERANCE
2016/02/16	F		Add Part No.	Wuxiaotao	Success	.X ±0.30
2015/08/04	E		Modify Title	Wuxiaotao	Success	.XX ±0.20
						.XXX ±0.10
						X.° ±2°



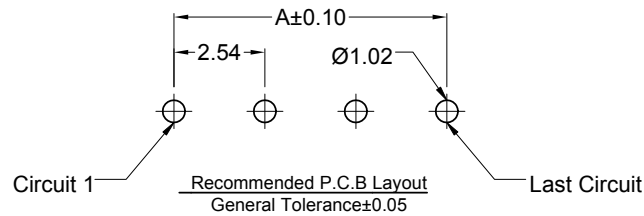
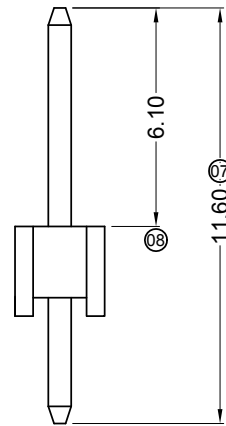
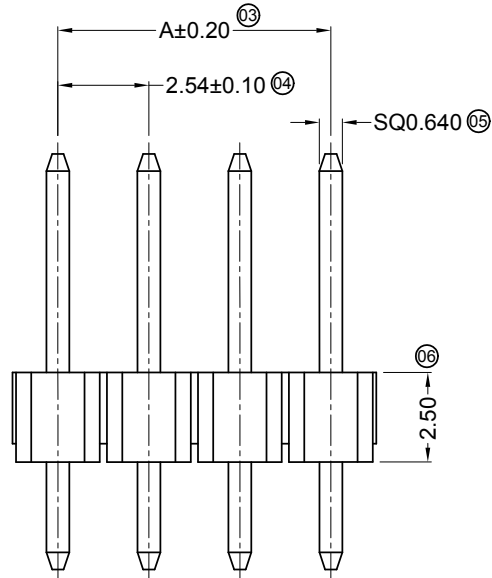
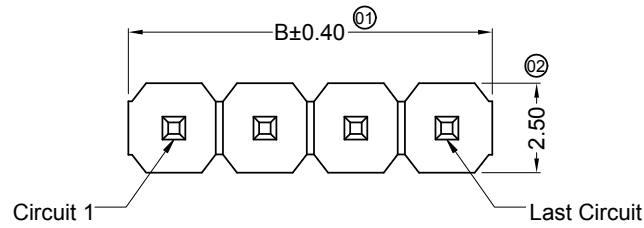
PART NO.
 6501WV-XX-6TV01-Q

APPROVAL	CHECK	DRAWN	DATE
Robing	Sun Kaibao	Liu Yan	2011/09/08

TITLE				
2.54 mm Pin Header connectors				
UNIT	SCALE	SHEET	REV	NUMBER
mm	1 : 1	1/1	G	A-268

RoHS

This products can apply to the SWB Doc NO. QA-3-04-005 of Environmental&Material Management Rules



■ Specifications:

- Voltage rating: 250V AC / DC
- Current rating: 3A AC / DC
- Withstanding voltage: 800V AC/minute
- Temperature range: -40°C~+105°C
- Insulation resistance: ≥1000MΩ
- Contact resistance: ≤20mΩ
- After environmental testing: ≤30mΩ
- Material(Pin): Brass
- Mates With SWB Female Header: 6501FX

6501 W V X -XX X - 6T V01 XX - W
 ① ② ③ ④ ⑤ ⑥ ⑦ ⑧ ⑨ ⑩

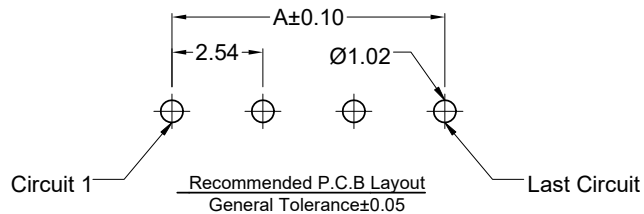
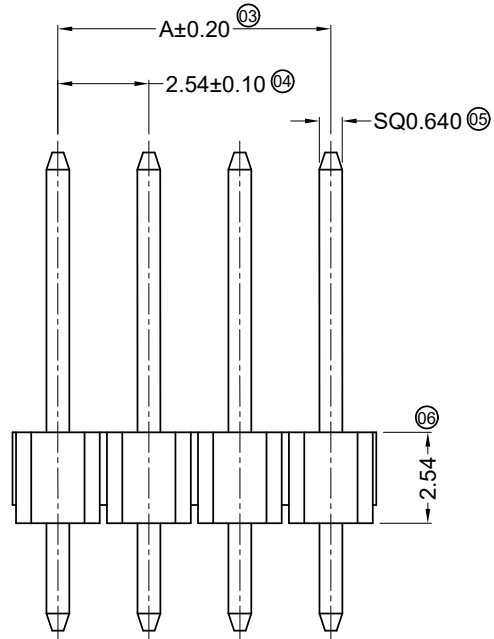
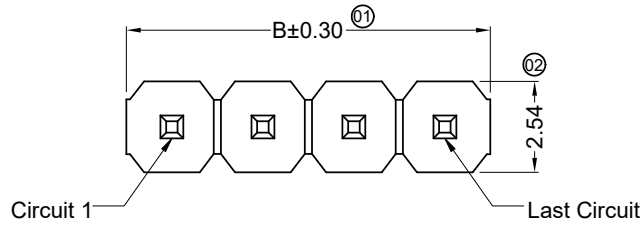
- ① Series No.
- ② Category: W-Wafer
- ③ Connector Type: V- 180°
- ④ Mounting Type: Blank-DIP
- ⑤ Row No.-Pin No Per Row: XX-02P~40P
- ⑥ Special No.: Blank-Ordinary
- ⑦ Material: 6T-PA6T 94V-0
- ⑧ Plating Code: V01-Gold Flash
- ⑨ Color: Blank-Black Color
- ⑩ W-6.10/2.50/3.00

Poles	Dimensions (mm)		Poles	Dimensions (mm)	
	A	B		A	B
01	--	2.54	21	50.80	53.34
02	2.54	5.08	22	53.34	55.88
03	5.08	7.62	23	55.88	58.42
04	7.62	10.16	24	58.42	60.96
05	10.16	12.70	25	60.96	63.50
06	12.70	15.24	26	63.50	66.04
07	15.24	17.78	27	66.04	68.58
08	17.78	20.32	28	68.58	71.12
09	20.32	22.86	29	71.12	73.66
10	22.86	25.40	30	73.66	76.20
11	25.40	27.94	31	76.20	78.74
12	27.94	30.48	32	78.74	81.28
13	30.48	33.02	33	81.28	83.82
14	33.02	35.56	34	83.82	86.36
15	35.56	38.10	35	86.36	88.90
16	38.10	40.64	36	88.90	91.44
17	40.64	43.18	37	91.44	93.98
18	43.18	45.72	38	93.98	96.52
19	45.72	48.26	39	96.52	99.06
20	48.26	50.80	40	99.06	101.60

GENERAL TOLERANCE						东莞市思索连接器有限公司 SWB CONNECTORS CO.,LTD				PART NO. 6501WV-XX-6TV01-W				
PROJECT										APPROVAL				TITLE 2.54 mm Pin Header connectors
DATE	REV	ECN NO.	DESCRIPTION	MODIFY	APPROVAL	Robing	Sun Kaibao	Liu Yan	2011/09/08	UNIT	SCALE	SHEET	REV	NUMBER
2020/03/16	B	EN20200316005	Update Drawing Frame	Mandy	Robing					mm	1 : 1	1/1	B	A-268

RoHS

This products can apply to the SWB Doc NO. QA-3-04-005 of Environmental&Material Management Rules



■ Specifications:

- Voltage rating: 250V AC / DC
- Current rating: 3A AC / DC
- Withstanding voltage: 800V AC/minute
- Temperature range: -40°C~+105°C
- Insulation resistance: ≥1000MΩ
- Contact resistance: ≤20mΩ
- After environmental testing: ≤30mΩ
- Material(Pin): Brass
- Mates With SWB Female Header: 6501FX

6501 W V X -XX X - 9T V01 XX - N
 ① ② ③ ④ ⑤ ⑥ ⑦ ⑧ ⑨ ⑩

- ① Series No.
- ② Category: W-Wafer
- ③ Connector Type: V- 180°
- ④ Mounting Type: Blank-DIP
- ⑤ Row No.-Pin No Per Row: XX-02P~40P
- ⑥ Special No.: Blank-Ordinary
- ⑦ Material: 9T-PA9T 94V-0
- ⑧ Plating Code: V01-Gold Flash
- ⑨ Color: Blank-Black Color
- ⑩ N-7.81/2.54/3.00

Poles	Dimensions (mm)		Poles	Dimensions (mm)	
	A	B		A	B
01	--	2.54	21	50.80	53.34
02	2.54	5.08	22	53.34	55.88
03	5.08	7.62	23	55.88	58.42
04	7.62	10.16	24	58.42	60.96
05	10.16	12.70	25	60.96	63.50
06	12.70	15.24	26	63.50	66.04
07	15.24	17.78	27	66.04	68.58
08	17.78	20.32	28	68.58	71.12
09	20.32	22.86	29	71.12	73.66
10	22.86	25.40	30	73.66	76.20
11	25.40	27.94	31	76.20	78.74
12	27.94	30.48	32	78.74	81.28
13	30.48	33.02	33	81.28	83.82
14	33.02	35.56	34	83.82	86.36
15	35.56	38.10	35	86.36	88.90
16	38.10	40.64	36	88.90	91.44
17	40.64	43.18	37	91.44	93.98
18	43.18	45.72	38	93.98	96.52
19	45.72	48.26	39	96.52	99.06
20	48.26	50.80	40	99.06	101.60

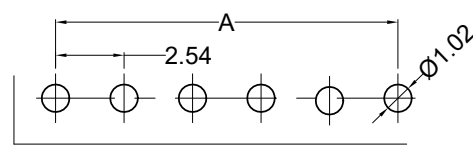
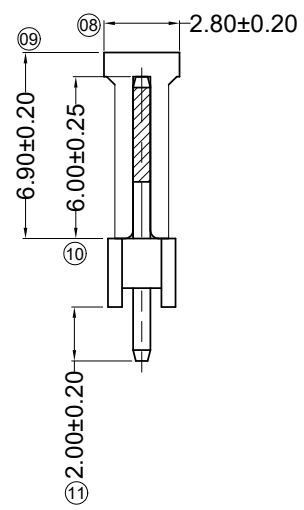
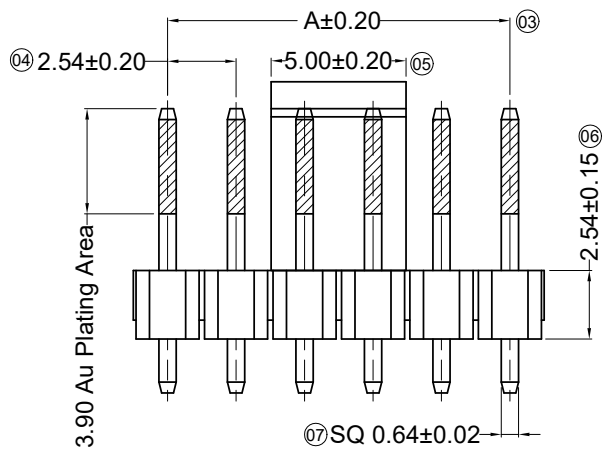
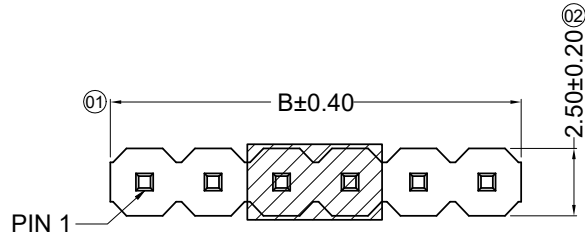
						东莞市思索连接器有限公司 SWB CONNECTORS CO.,LTD				PART NO. 6501WV-XX-9TV01-N				
						APPROVAL Tang Joshua Alan qin				TITLE 2.54 mm Pin Header connectors				
						CHECK Joshua				UNIT SCALE SHEET REV NUMBER mm 1:1 1/1 B A-268				
						DRAWN Alan qin				DATE 2017/04/21				
						PROJECT 								
2020/03/16	B	EN20200316005	Update Drawing Frame	Mandy	Robing									
DATE	REV	ECN NO.	DESCRIPTION	MODIFY	APPROVAL									

RoHS

This products can apply to the SWB Doc NO. QA-3-04-005 of Environmental&Material Management Rules

■ Specifications :

- Voltage rating: 250V AC / DC
- Current rating: 3A AC / DC
- Withstanding voltage: 800V AC/minute
- Temperature range: -25°C~+85°C
- Insulation resistance: ≥1000MΩ
- Contact resistance: ≤20mΩ
- After environmental testing: ≤30mΩ
- Material(Pin): Brass Material(CAP): LCP UL94V-0 Halogen free
- Mates With SWB Wafer: 6501FX



Recommended P.C.B Layout
General Tolerance±0.05



6501 W V -XX FC - LP XXX -H
①② ③④ ⑤⑥ ⑦⑧

- ① Series No.
- ② Category: W-wafer
- ③ Connector Type: V-180°
- ④ Row No.-Pin No Per Row.: XX-Single row
- ⑤ Special NO.: FC-Halogen free With CAP
- ⑥ Material: LP-LCP UL94V-0
- ⑦ Plating Code:
V01-Gold Flash Ni 50u"Min. Overall
V30-Contact Area Gold 30u"Min. Other Area Gold Flash Ni 50u"Min. Overall
SW-Matte Tin 100u"Min. Ni 50u"Min. Overall
- ⑧ H-L=6.00/2.54/2.00

Poles	Dimensions (mm)		Poles	Dimensions (mm)		Poles	Dimensions (mm)		Poles	Dimensions (mm)	
	A	B		A	B		A	B		A	B
01	--	2.54	11	25.40	27.94	21	50.80	53.34	31	76.20	78.74
02	2.54	5.08	12	27.94	30.48	22	53.34	55.88	32	78.74	81.28
03	5.08	7.62	13	30.48	33.02	23	55.88	58.42	33	81.28	83.82
04	7.62	10.16	14	33.02	35.56	24	58.42	60.96	34	83.82	86.36
05	10.16	12.70	15	35.56	38.10	25	60.96	63.50	35	86.36	88.90
06	12.70	15.24	16	38.10	40.64	26	63.50	66.04	36	88.90	91.44
07	15.24	17.78	17	40.64	43.18	27	66.04	68.58	37	91.44	93.98
08	17.78	20.32	18	43.18	45.72	28	68.58	71.12	38	93.98	96.52
09	20.32	22.86	19	45.72	48.26	29	71.12	73.66	39	96.52	99.06
10	22.86	25.40	20	48.26	50.80	30	73.66	76.20	40	99.06	101.60

DATE	REV	ECN NO.	DESCRIPTION	MODIFY	APPROVAL
20-03-09	B	EN20200316005	Update drawing	Mali	Joshua

GENERAL TOLERANCE
.X ±0.35
.XX ±0.25
.XXX ±0.15
X.° ±2°

PROJECT

东莞市思索连接器有限公司
SWB CONNECTORS CO.,LTD

APPROVAL CHECK DRAWN DATE
Robing Robing Joshua 2017/04/20

PART NO.
6501WV-XXFC-LPXXX-H

TITLE
2.54mm Pin Header connectors

UNIT	SCALE	SHEET	REV	NUMBER
mm	1:1	1/1	B	A-213

RoHS

This products can apply to the SWB Doc NO. QA-3-04-005 of Environmental&Material Management Rules

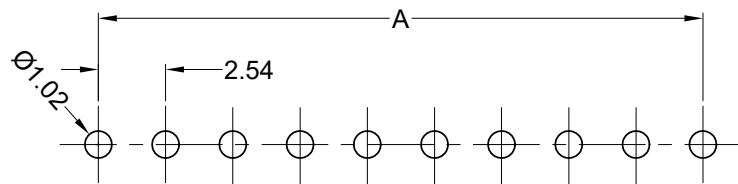
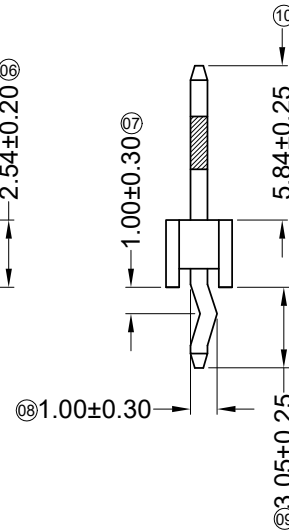
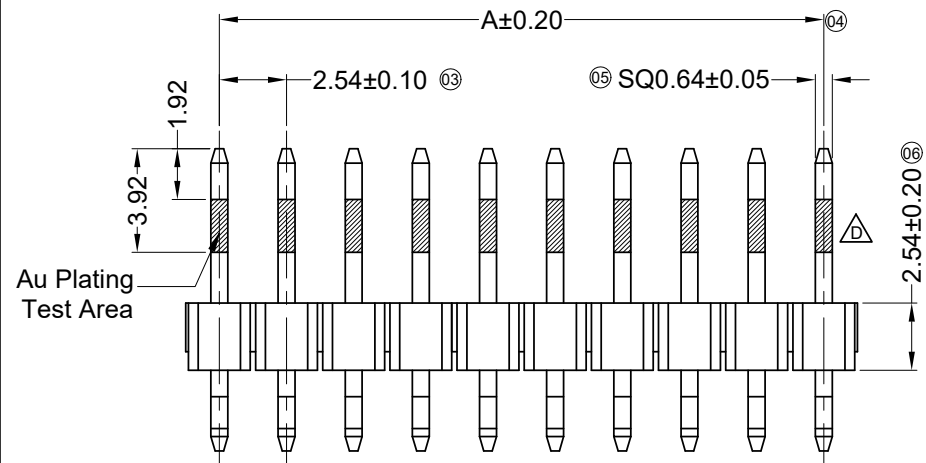
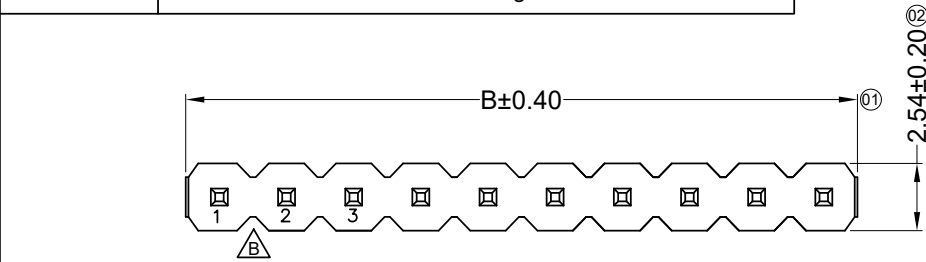
■ Specifications :

- Voltage rating: 250V AC / DC
- Current rating: 3A AC / DC
- Withstanding voltage: 800V AC/minute
- Temperature range: -25°C~+85°C
- Insulation resistance: ≥1000MΩ
- Contact resistance: ≤20mΩ
- After environmental testing: ≤30mΩ
- Material(Pin): Brass
- Mates With SWB Female Header: 6501FX

6501 W V -XX HF -4T XXX- T7

① ② ③ ④ ⑤ ⑥ ⑦ ⑧

- ① Series No.
- ② Category: W-wafer
- ③ Connector Type: V-180°
- ④ Row No.-Pin No Per Row: XX-Single row
- ⑤ Special NO.: HF-Halogen Free
- ⑥ Material: 4T-PA4T 94V-0
- ⑦ Plating Code: V01-Gold Flash, Ni 50u"Min. V15-Contact Area Au15u"Min. Other Area G/F Ni:50u"Min.
- ⑧ T7-L=5.84/2.54/3.05



Recommended P.C.B Layout
General Tolerance±0.05



Poles	Dimensions(mm)		Poles	Dimensions(mm)	
	A	B		A	B
01	---	2.54	21	50.80	53.34
02	2.54	5.08	22	53.34	55.88
03	5.08	7.62	23	55.88	58.42
04	7.62	10.16	24	58.42	60.96
05	10.16	12.70	25	60.96	63.50
06	12.70	15.24	26	63.50	66.04
07	15.24	17.78	27	66.04	68.58
08	17.78	20.32	28	68.58	71.12
09	20.32	22.86	29	71.12	73.66
10	22.86	25.40	30	73.66	76.20
11	25.40	27.94	31	76.20	78.74
12	27.94	30.48	32	78.74	81.28
13	30.48	33.02	33	81.28	83.82
14	33.02	35.56	34	83.82	86.36
15	35.56	38.10	35	86.36	88.90
16	38.10	40.64	36	88.90	91.44
17	40.64	43.18	37	91.44	93.98
18	43.18	45.72	38	93.98	96.52
19	45.72	48.26	39	96.52	99.06
20	48.26	50.80	40	99.06	101.60

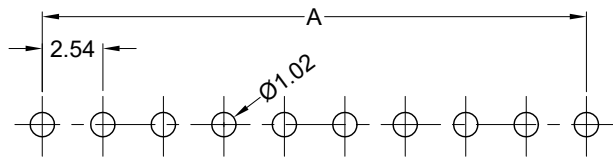
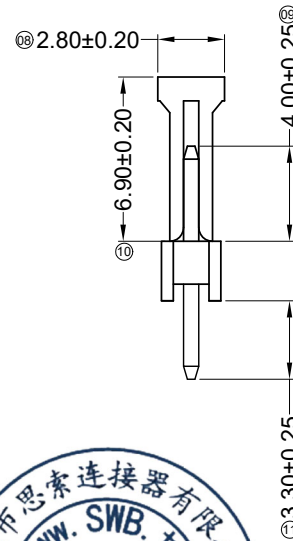
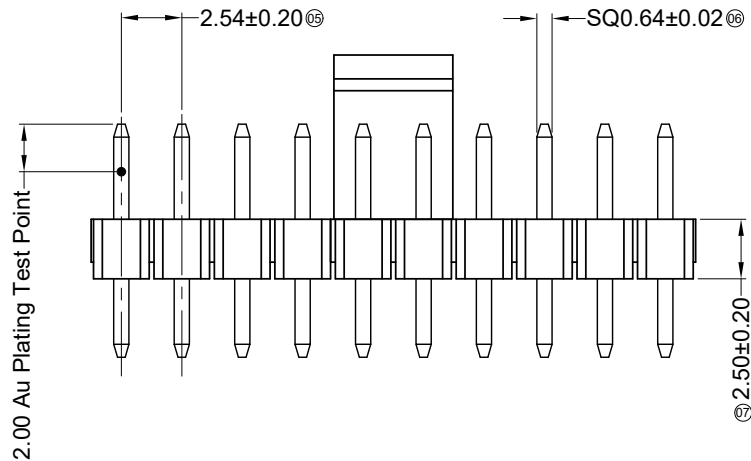
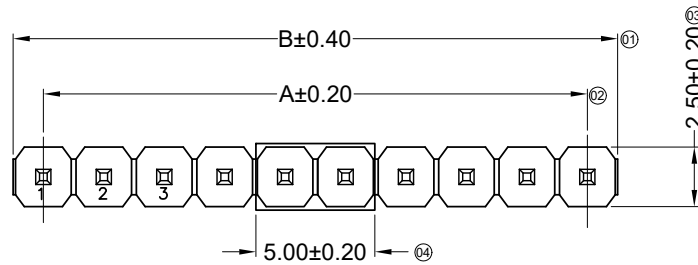
20-03-16	D	EN20200316005	Add Contact Area Gold Plating Area	Mali	Joshua	东莞市思索连接器有限公司 SWB CONNECTORS CO.,LTD	PART NO. 6501WV-XXHF-4TV15-T7							
17-03-02	C		Add Gold Flash Specification	Joshua	Tang		TITLE 2.54mm Pin Header connectors							
16-09-23	B		Modity appearance	Joshua	Tang		APPROVAL	CHECK	DRAWN	DATE				
DATE	REV	ECN NO.	DESCRIPTION	MODIFY	APPROVAL		Robing	Joshua	Alan qin	2017/03/02	UNIT	SCALE	SHEET	REV
										mm	1:1	1/1	D	A-213

RoHS

This products can apply to the SWB Doc NO. QA-3-04-005 of Environmental&Material Management Rules

■ Specifications :

- Voltage rating: 250V AC / DC
- Current rating: 3A AC / DC
- Withstanding voltage: 800V AC/minute
- Temperature range: -25°C~+85°C
- Insulation resistance: ≥1000MΩ
- Contact resistance: ≤20mΩ
- After environmental testing: ≤30mΩ
- Material(Pin): Brass
- Material(CAP): LCP 94V-0 Black Halogen Free
- Mates With SWB Female Header: 6501FX



Recommended P.C.B Layout
General Tolerance±0.05


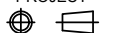


6501 W V -XX L -LP XX

01 02 03 04 05 06 07

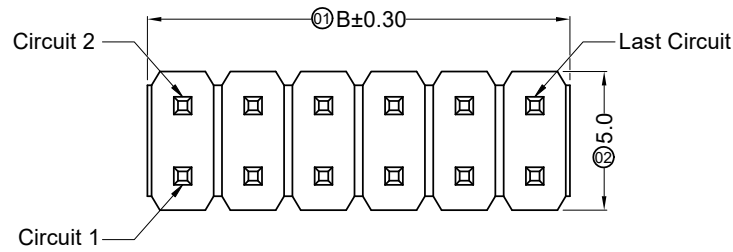
- 01 Series No.
- 02 Category: W-wafer
- 03 Connector Type: V-180°
- 04 Row No.-Pin No Per Row.: XX-Single row
- 05 Special NO.: L-4.00*2.50*3.30
- 06 Material: LP-LCP UL94V-0
- 07 Plating Code:
V30-Contact Area 30u" Min. Solder Area Gold Flash Under Ni 50u"Min.

Poles	Dimensions(mm)		Poles	Dimensions(mm)	
	A	B		A	B
02	2.54	5.08	22	53.34	55.88
03	5.08	7.62	23	55.88	58.42
04	7.62	10.16	24	58.42	60.96
05	10.16	12.70	25	60.96	63.50
06	12.70	15.24	26	63.50	66.04
07	15.24	17.78	27	66.04	68.58
08	17.78	20.32	28	68.58	71.12
09	20.32	22.86	29	71.12	73.66
10	22.86	25.40	30	73.66	76.20
11	25.40	27.94	31	76.20	78.74
12	27.94	30.48	32	78.74	81.28
13	30.48	33.02	33	81.28	83.82
14	33.02	35.56	34	83.82	86.36
15	35.56	38.10	35	86.36	88.90
16	38.10	40.64	36	88.90	91.44
17	40.64	43.18	37	91.44	93.98
18	43.18	45.72	38	93.98	96.52
19	45.72	48.26	39	96.52	99.06
20	48.26	50.80	40	99.06	101.60
21	50.80	53.34			

GENERAL TOLERANCE					 东莞市思索连接器有限公司 SWB CONNECTORS CO.,LTD				PART NO.					
.X ±0.35 .XX ±0.25 .XXX ±0.15 X.° ±2°									6501WV-XXL-LPV30					
PROJECT					APPROVAL				TITLE					
Robing 					Robing Robing Joshua 2018/08/08				2.54mm Pin Header connectors					
DATE	REV	ECN NO.	DESCRIPTION	MODIFY	APPROVAL	UNIT	SCALE	SHEET	REV	NUMBER				
2020-03-17	B	EN20200316005	Add gold-plated measuring points	Mali	Joshua	mm	1:1	1/1	B	A-213				

RoHS

This products can apply to the SWB Doc NO. QA-3-04-005 of Environmental&Material Management Rules



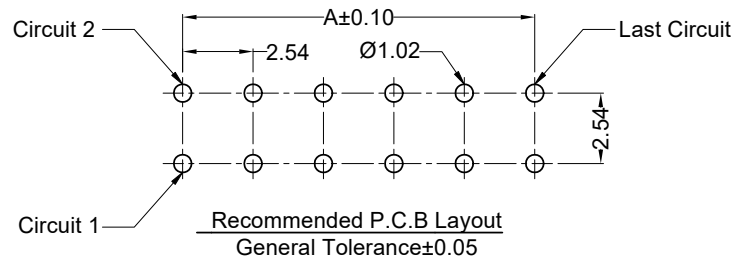
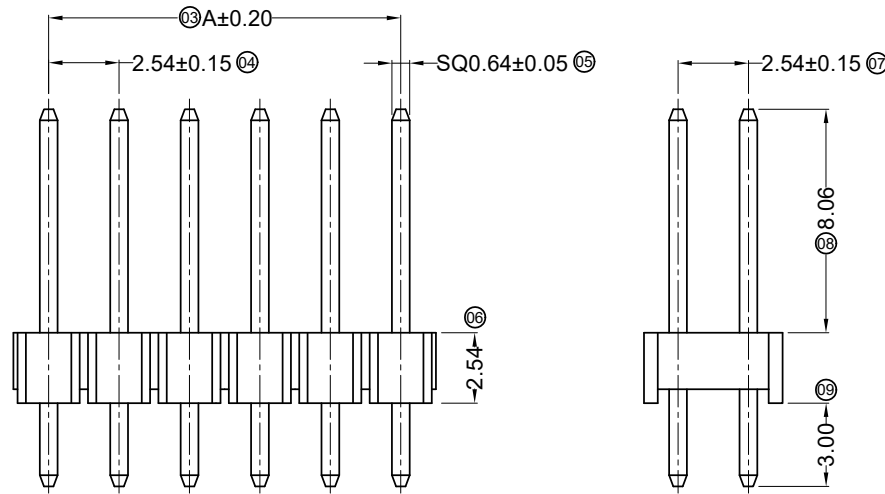
■ Specifications :

- Voltage rating: 250V AC / DC
- Current rating: 3A AC / DC
- Withstanding voltage: 800V AC/minute
- Temperature range: -40°C~+105°C
- Insulation resistance: ≥1000MΩ
- Contact resistance: ≤20mΩ
- After environmental testing: ≤30mΩ
- Material(Pin): Brass
- Mates With SWB Female Header:6501FX

6501 W V X-2*XX X-6T V01 XX-01

① ②③④ ⑤ ⑥ ⑦ ⑧ ⑨ ⑩

- ① Series No.
- ② Category: W-Wafer
- ③ Connector Type: V- 180°
- ④ Mounting Type: Blank-DIP
- ⑤ Row No.-Pin No Per Row: 2*XX-2*02P~2*40P
- ⑥ Special No.: Blank-Ordinary
- ⑦ Material: 6T-PA6T 94V-0;
- ⑧ Plating Code: V01- Gold Flash
- ⑨ Color: Blank-Black color
- ⑩ 01-8.06/2.54/3.00



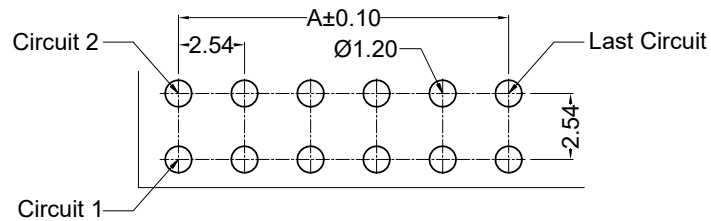
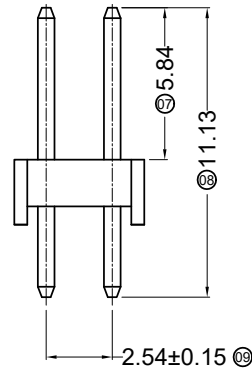
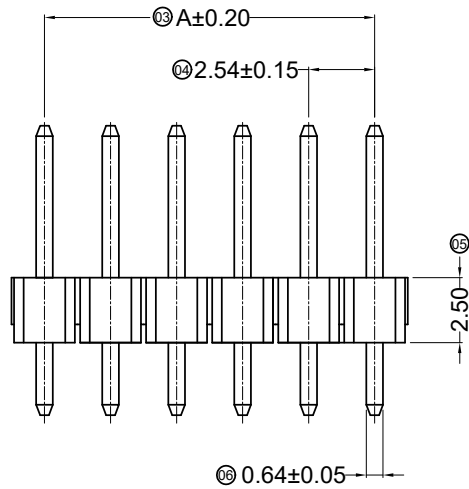
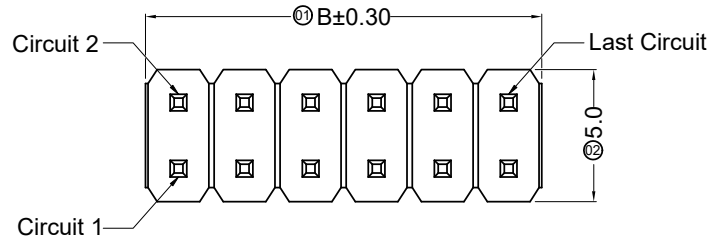
Poles	Dimensions(mm)		Poles	Dimensions(mm)		Poles	Dimensions(mm)	
	A	B		A	B		A	B
2*02	2.54	5.08	2*15	35.56	38.10	2*28	68.58	71.12
2*03	5.08	7.62	2*16	38.10	40.64	2*29	71.12	73.66
2*04	7.62	10.16	2*17	40.64	43.18	2*30	73.66	76.20
2*05	10.16	12.70	2*18	43.18	45.72	2*31	76.20	78.74
2*06	12.70	15.24	2*19	45.72	48.26	2*32	78.74	81.28
2*07	15.24	17.78	2*20	48.26	50.80	2*33	81.28	83.82
2*08	17.78	20.32	2*21	50.80	53.34	2*34	83.82	86.36
2*09	20.32	22.86	2*22	53.34	55.88	2*35	86.36	88.90
2*10	22.86	25.40	2*23	55.88	58.42	2*36	88.90	91.44
2*11	25.40	27.94	2*24	58.42	60.96	2*37	91.44	93.98
2*12	27.94	30.48	2*25	60.96	63.50	2*38	93.98	96.52
2*13	30.48	33.02	2*26	63.50	66.04	2*39	96.52	99.06
2*14	33.02	35.56	2*27	66.04	68.58	2*40	99.06	101.60

2020/03/16	F	EN20200316005	Update Drawing Frame, The Same ECR And ECN No	Mandy	Robing	GENERAL TOLERANCE	<p>东莞市思索连接器有限公司 SWB CONNECTORS CO.,LTD</p>	PART NO. 6501WV-2*XX-6TV01-01				
2015/08/04	E		Modify Title	Felix.Xie	Success	.X ±0.30		TITLE 2.54 mm Pin Header connectors				
2015/05/12	D		Modify drawing frame format	jian.He	Success	.XX ±0.20		APPROVAL	CHECK	DRAWN	DATE	
						.XXX ±0.10		Robing	Sun Kaibao	Liu Yan	2007/05/03	
						X.° ±2°						
DATE	REV	ECN NO.	DESCRIPTION	MODIFY	APPROVAL	PROJECT						

UNIT	SCALE	SHEET	REV	NUMBER
mm	1:1	1/1	F	A-268

RoHS

This products can apply to the SWB Doc NO. QA-3-04-005 of Environmental&Material Management Rules



Recommended P.C.B Layout
General Tolerance±0.05

Specifications :

- Voltage rating: 250V AC / DC
- Current rating: 3A AC / DC
- Withstanding voltage: 800V AC/minute
- Temperature range: -40°C~+105°C
- Insulation resistance: ≥1000MΩ
- Contact resistance: ≤20mΩ
- After environmental testing: ≤30mΩ
- Material(Pin):Brass
- Mates With SWB Female Header:6501FX

6501 W V X-2*XX X-6T V01 XX-02
① ②③④ ⑤ ⑥ ⑦ ⑧ ⑨ ⑩

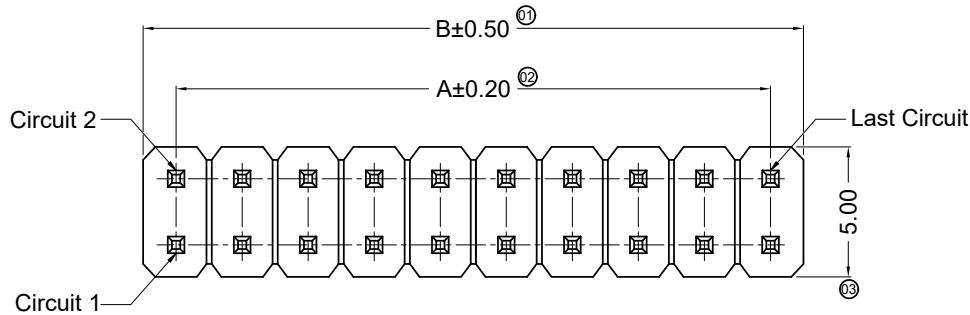
- ① Series No.
- ② Category: W-Wafer
- ③ Connector Type: V- 180°
- ④ Mouting Type: Blank-DIP
- ⑤ Row No.-Pin No Per Row: 2*XX-2*02P~2*40P
- ⑥ Special No.: Blank-ordinary
- ⑦ Material: 6T-PA6T 94V-0;
- ⑧ Plating Code: V01- Gold Flash
- ⑨ Color: Blank-Black color
- ⑩ 02-11.13/5.84/2.50

Poles	Dimensions(mm)		Poles	Dimensions(mm)		Poles	Dimensions(mm)	
	A	B		A	B		A	B
2*02	2.54	5.08	2*15	35.56	38.10	2*28	68.58	71.12
2*03	5.08	7.62	2*16	38.10	40.64	2*29	71.12	73.66
2*04	7.62	10.16	2*17	40.64	43.18	2*30	73.66	76.20
2*05	10.16	12.70	2*18	43.18	45.72	2*31	76.20	78.74
2*06	12.70	15.24	2*19	45.72	48.26	2*32	78.74	81.28
2*07	15.24	17.78	2*20	48.26	50.80	2*33	81.28	83.82
2*08	17.78	20.32	2*21	50.80	53.34	2*34	83.82	86.36
2*09	20.32	22.86	2*22	53.34	55.88	2*35	86.36	88.90
2*10	22.86	25.40	2*23	55.88	58.42	2*36	88.90	91.44
2*11	25.40	27.94	2*24	58.42	60.96	2*37	91.44	93.98
2*12	27.94	30.48	2*25	60.96	63.50	2*38	93.98	96.52
2*13	30.48	33.02	2*26	63.50	66.04	2*39	96.52	99.06
2*14	33.02	35.56	2*27	66.04	68.58	2*40	99.06	101.60

						东莞市思索连接器有限公司 SWB CONNECTORS CO.,LTD				PART NO. 6501WV-2*XX-6TV01-02				
						APPROVAL CHECK DRAWN DATE				TITLE 2.54 mm Pin Header connectors				
2020/03/16	B	EN20200316005	Update Drawing Frame	Mandy	Robing	Robing	Joshua	Jack	2018/04/09	UNIT	SCALE	SHEET	REV	NUMBER
DATE	REV	ECN NO.	DESCRIPTION	MODIFY	APPROVAL	PROJECT				mm	1:1	1/1	B	A-268

RoHS

This products can apply to the SWB Doc NO. QA-3-04-005 of Environmental&Material Management Rules

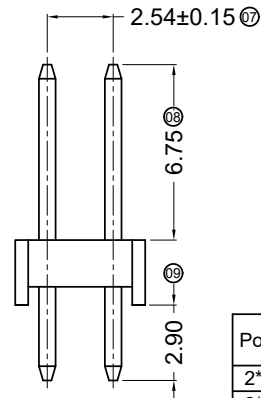
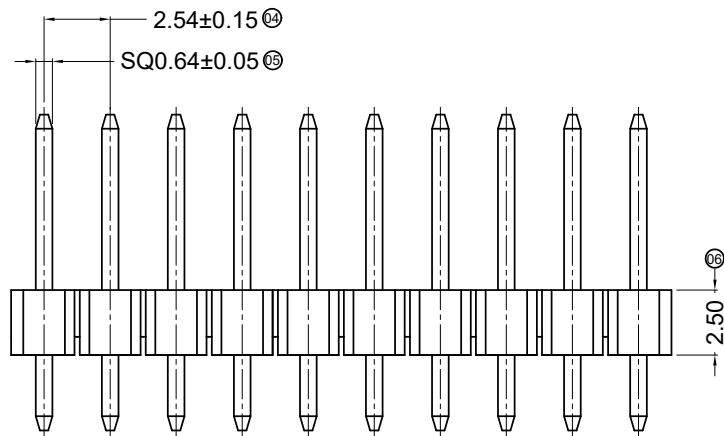


■ Specifications :

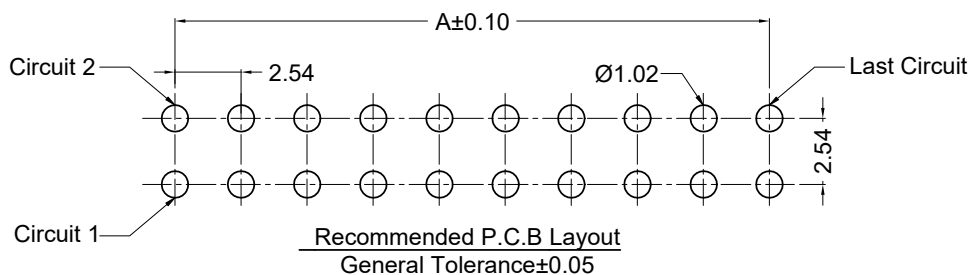
- Voltage rating: 250V AC / DC
- Current rating: 3A AC / DC
- Withstanding voltage: 800V AC/minute
- Temperature range: -40°C~+105°C
- Insulation resistance: ≥1000MΩ
- Contact resistance: ≤20mΩ
- After environmental testing: ≤30mΩ
- Material(Pin): Brass
- Mates With SWB Female Header: 6501FX

6501 W V X-2*XX X-6T V01 XX-07
① ② ③ ④ ⑤ ⑥ ⑦ ⑧ ⑨ ⑩

- ① Series No.
- ② Category: W-Wafer
- ③ Connector Type: V- 180°
- ④ Mouting Type: Blank-DIP
- ⑤ Row No.-Pin No Per Row: 2*XX-2*02P~2*40P
- ⑥ Special No.: Blank-Ordinary
- ⑦ Material: 6T-PA6T 94V-0;
- ⑧ Plating Code: V01- Gold Flash
- ⑨ Color: Blank-Black Color
- ⑩ 07-6.75/2.50/2.90



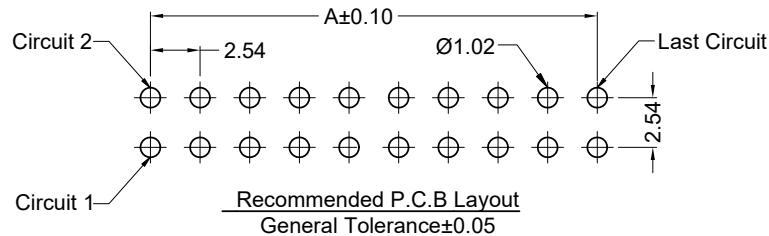
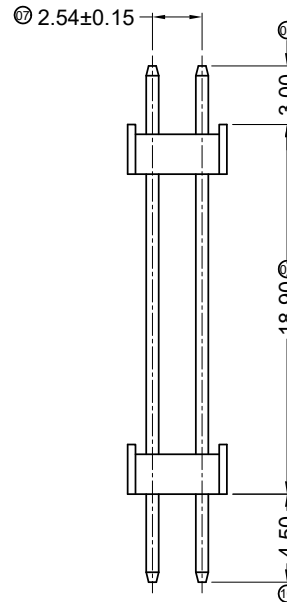
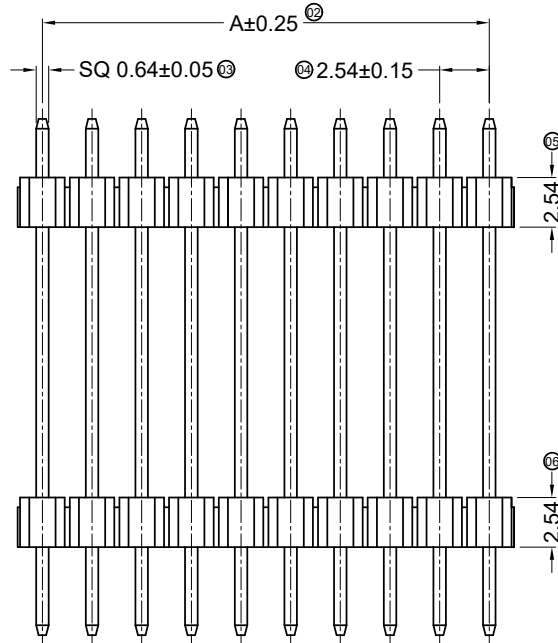
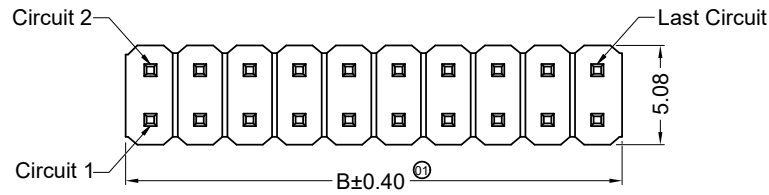
Poles	Dimensions(mm)		Poles	Dimensions(mm)		Poles	Dimensions(mm)	
	A	B		A	B		A	B
2*02	2.54	5.08	2*15	35.56	38.10	2*28	68.58	71.12
2*03	5.08	7.62	2*16	38.10	40.64	2*29	71.12	73.66
2*04	7.62	10.16	2*17	40.64	43.18	2*30	73.66	76.20
2*05	10.16	12.70	2*18	43.18	45.72	2*31	76.20	78.74
2*06	12.70	15.24	2*19	45.72	48.26	2*32	78.74	81.28
2*07	15.24	17.78	2*20	48.26	50.80	2*33	81.28	83.82
2*08	17.78	20.32	2*21	50.80	53.34	2*34	83.82	86.36
2*09	20.32	22.86	2*22	53.34	55.88	2*35	86.36	88.90
2*10	22.86	25.40	2*23	55.88	58.42	2*36	88.90	91.44
2*11	25.40	27.94	2*24	58.42	60.96	2*37	91.44	93.98
2*12	27.94	30.48	2*25	60.96	63.50	2*38	93.98	96.52
2*13	30.48	33.02	2*26	63.50	66.04	2*39	96.52	99.06
2*14	33.02	35.56	2*27	66.04	68.58	2*40	99.06	101.60



					GENERAL TOLERANCE .X ±0.30 .XX ±0.20 .XXX ±0.10 X.° ±2°				东莞市思索连接器有限公司 SWB CONNECTORS CO.,LTD				PART NO. 6501WV-2*XX-6TV01-07										
					APPROVAL Robing				CHECK Alan Qin				DRAWN Mandy				DATE 2020/03/16						
					PROJECT 				TITLE 2.54 mm Pin Header connectors														
DATE	REV	ECN NO.	DESCRIPTION	MODIFY	APPROVAL						UNIT	SCALE	SHEET	REV	NUMBER								
											mm	1 : 1	1/1	A	A-268								

RoHS

This products can apply to the SWB Doc NO. QA-3-04-005 of Environmental&Material Management Rules



Specifications:

- Voltage rating: 250V AC / DC
- Current rating: 3A AC / DC
- Withstanding voltage: 800V AC/minute
- Temperature range: -40°C~+105°C
- Insulation resistance: ≥1000MΩ
- Contact resistance: ≤20mΩ
- After environmental testing: ≤30mΩ
- Material(Pin): Brass
- Mates With SWB Female Header: 6501FX

6501 W V X - 2*XX H2 - 6T V01XX -01

① ② ③ ④ ⑤ ⑥ ⑦ ⑧ ⑨ ⑩

- ① Series No.
- ② Category: W-Wafer
- ③ Connector Type: V- 180°
- ④ Mounting Type: Blank-DIP
- ⑤ Row No.-Pin No Per Row: 2*XX-2*02P~2*40P
- ⑥ Special No.: H2-Double plastic
- ⑦ Material: 6T-PA6T 94V-0
- ⑧ Plating Code: V01-Gold Flash
- ⑨ Color: Blank-Black
- ⑩ 01-3.00/18.90/4.50

Poles	Dimensions(mm)		Poles	Dimensions(mm)		Poles	Dimensions(mm)	
	A	B		A	B		A	B
2*02	2.54	5.08	2*15	35.56	38.10	2*28	68.58	71.12
2*03	5.08	7.62	2*16	38.10	40.64	2*29	71.12	73.66
2*04	7.62	10.16	2*17	40.64	43.18	2*30	73.66	76.20
2*05	10.16	12.70	2*18	43.18	45.72	2*31	76.20	78.74
2*06	12.70	15.24	2*19	45.72	48.26	2*32	78.74	81.28
2*07	15.24	17.78	2*20	48.26	50.80	2*33	81.28	83.82
2*08	17.78	20.32	2*21	50.80	53.34	2*34	83.82	86.36
2*09	20.32	22.86	2*22	53.34	55.88	2*35	86.36	88.90
2*10	22.86	25.40	2*23	55.88	58.42	2*36	88.90	91.44
2*11	25.40	27.94	2*24	58.42	60.96	2*37	91.44	93.98
2*12	27.94	30.48	2*25	60.96	63.50	2*38	93.98	96.52
2*13	30.48	33.02	2*26	63.50	66.04	2*39	96.52	99.06
2*14	33.02	35.56	2*27	66.04	68.58	2*40	99.06	101.60

DATE	REV	ECN NO.	DESCRIPTION	MODIFY	APPROVAL
1					
2					
3					
4					
5					

GENERAL TOLERANCE
.X ±0.30
.XX ±0.20
.XXX ±0.10
X.° ±2°
PROJECT

东莞市思索连接器有限公司
SWB CONNECTORS CO.,LTD
 APPROVAL: Robing CHECK: Alan Qin DRAWN: Mandy DATE: 2019/09/18

PART NO. 6501WV-2*XXH2-6TV01-01				
TITLE 2.54mm Pin Header connectors				
UNIT	SCALE	SHEET	REV	NUMBER
mm	1:1	1/1	A	A-268

RoHS

This products can apply to the SWB Doc NO. QA-3-04-005 of Environmental&Material Management Rules

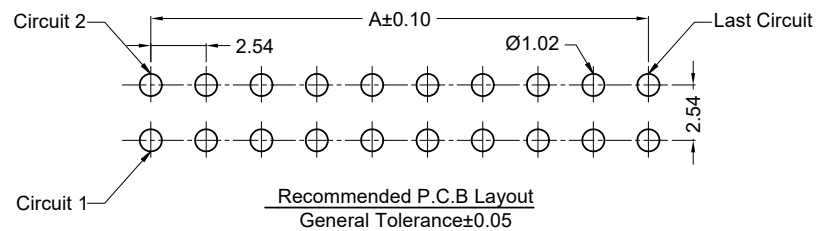
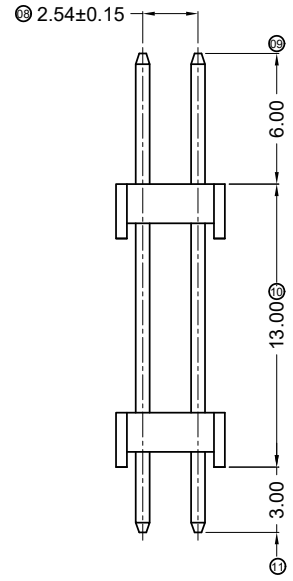
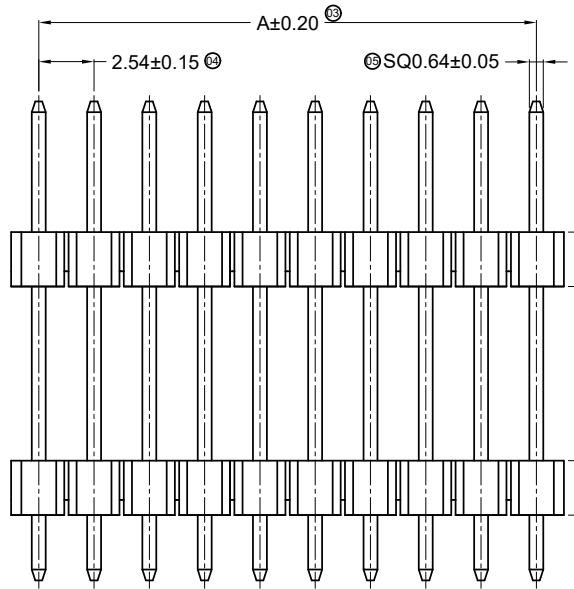
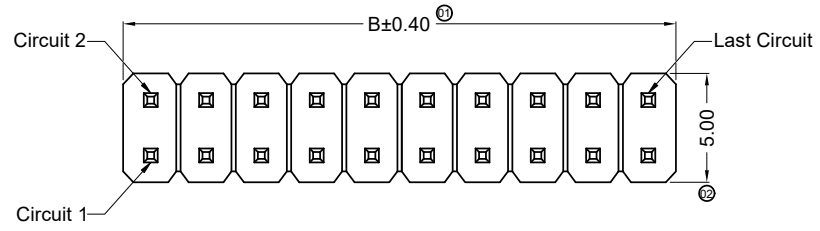


■ Specifications:

- Voltage rating: 250V AC / DC
- Current rating: 3A AC / DC
- Withstanding voltage: 800V AC/minute
- Temperature range: -40°C~+105°C
- Insulation resistance: ≥1000MΩ
- Contact resistance: ≤20mΩ
- After environmental testing: ≤30mΩ
- Material(Pin): Brass
- Mates With SWB Female Header: 6501FX

6501 W V X-2*XX H2-6T V01 XX-02
① ② ③ ④ ⑤ ⑥ ⑦ ⑧ ⑨ ⑩

- ① Series No.
- ② Category: W-Wafer
- ③ Connector Type: V- 180°
- ④ Mouting Type: Blank-DIP
- ⑤ Row No.-Pin No Per Row: 2*XX-2*02P~2*40P
- ⑥ Special No.: H2-Double plastic
- ⑦ Material: 6T-PA6T 94V-0
- ⑧ Plating Code: V01- Gold Flash
- ⑨ Color: Blank-Black Color
- ⑩ 02-6.00/13.00/3.00

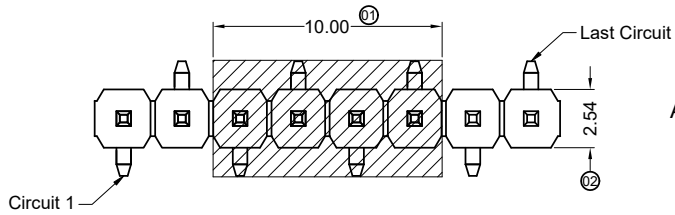


Poles	Dimensions(mm)		Poles	Dimensions(mm)		Poles	Dimensions(mm)	
	A	B		A	B		A	B
2*02	2.54	5.08	2*15	35.56	38.10	2*28	68.58	71.12
2*03	5.08	7.62	2*16	38.10	40.64	2*29	71.12	73.66
2*04	7.62	10.16	2*17	40.64	43.18	2*30	73.66	76.20
2*05	10.16	12.70	2*18	43.18	45.72	2*31	76.20	78.74
2*06	12.70	15.24	2*19	45.72	48.26	2*32	78.74	81.28
2*07	15.24	17.78	2*20	48.26	50.80	2*33	81.28	83.82
2*08	17.78	20.32	2*21	50.80	53.34	2*34	83.82	86.36
2*09	20.32	22.86	2*22	53.34	55.88	2*35	86.36	88.90
2*10	22.86	25.40	2*23	55.88	58.42	2*36	88.90	91.44
2*11	25.40	27.94	2*24	58.42	60.96	2*37	91.44	93.98
2*12	27.94	30.48	2*25	60.96	63.50	2*38	93.98	96.52
2*13	30.48	33.02	2*26	63.50	66.04	2*39	96.52	99.06
2*14	33.02	35.56	2*27	66.04	68.58	2*40	99.06	101.60

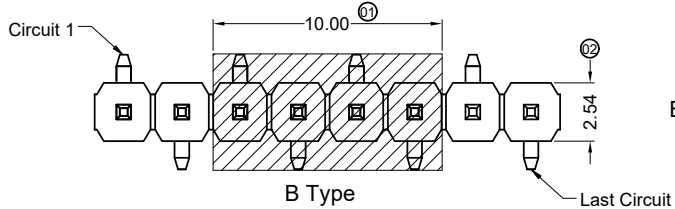
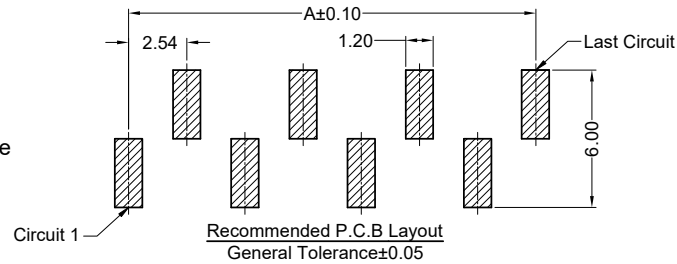
						东莞市思索连接器有限公司 SWB CONNECTORS CO.,LTD				PART NO. 6501WV-2*XXH2-6TV01-02				
						APPROVAL CHECK DRAWN DATE				TITLE 2.54 mm Pin Header connectors				
2020/03/16	B	EN20200316005	Update Drawing Frame	Mandy	Robing	Robing	Alan	Mandy	2019/10/11	UNIT	SCALE	SHEET	REV	NUMBER
DATE	REV	ECN NO.	DESCRIPTION	MODIFY	APPROVAL	PROJECT				mm	1:1	1/1	B	A-268

RoHS

This products can apply to the SWB Doc NO. QA-3-04-005 of Environmental&Material Management Rules

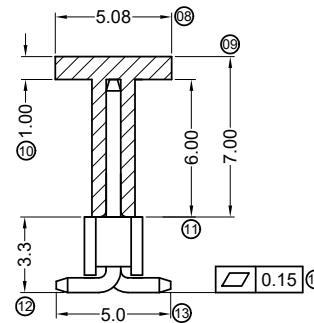
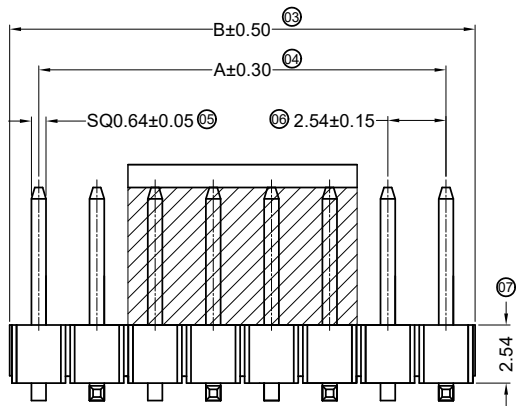
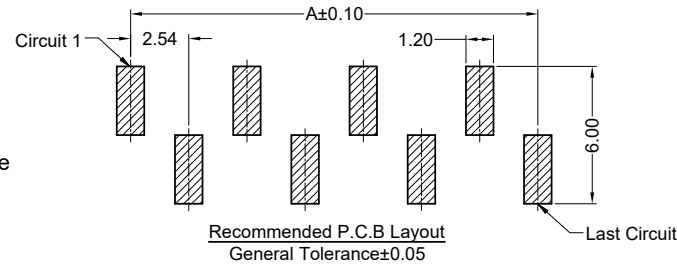


A Type



B Type

B Type



■ Specifications :

- Voltage rating: 250V AC / DC
- Current rating: 3A AC / DC
- Withstanding voltage: 800V AC/minute
- Temperature range: -40°C~+105°C
- Insulation resistance: ≥1000MΩ
- Contact resistance: ≤20mΩ
- After environmental testing: ≤30mΩ
- Material(Pin): Brass
- Mates With SWB Female Header: 6501FX

6501 W V S - XX XX - 6T V01 XX -02X
① ②③④ ⑤ ⑥ ⑦ ⑧ ⑨ ⑩

- ① Series No.
- ② Category: W-Wafer
- ③ Connector Type: V- Straight 180°
- ④ Mounting Type: S-SMT
- ⑤ Row No.-Pin No Per Row: XX-02P~40P
- ⑥ Special No.: Blank-Ordinary
- ⑦ Material: 6T-PA6T 94V-0
- ⑧ Plating Code: V01-Gold Flash
- ⑨ Color: Blank-Black Color
- ⑩ 02A-6.00/2.54/5.00mm ,A type
02B-6.00/2.54/5.00mm ,B type

Poles	Dimensions(mm)		Poles	Dimensions(mm)	
	A	B		A	B
02	2.54	5.08	22	53.34	55.08
03	5.08	7.62	23	55.88	58.42
04	7.62	10.16	24	58.42	60.96
05	10.16	12.70	25	60.96	63.50
06	12.70	15.24	26	63.50	66.04
07	15.24	17.78	27	66.04	68.58
08	17.78	20.32	28	68.58	71.12
09	20.32	22.86	29	71.12	73.66
10	22.86	25.40	30	73.66	76.20
11	25.40	27.94	31	76.20	78.74
12	27.94	30.48	32	78.74	81.28
13	30.48	33.02	33	81.28	83.82
14	33.02	35.56	34	83.82	86.36
15	35.56	38.10	35	86.36	88.90
16	38.10	40.64	36	88.90	91.44
17	40.64	43.18	37	91.44	93.98
18	43.18	45.72	38	93.98	96.52
19	45.72	48.26	39	96.52	99.06
20	48.26	50.80	40	99.06	101.60
21	50.80	53.34			

					<p>GENERAL TOLERANCE</p> <p>.X ±0.30</p> <p>.XX ±0.20</p> <p>.XXX ±0.10</p> <p>X.° ±2°</p>				<p>东莞市思索连接器有限公司</p> <p>SWB CONNECTORS CO.,LTD</p>				<p>PART NO.</p> <p>6501WVS-XX-6TV01-02X</p>								
					<p>APPROVAL</p> <p>Robing</p>				<p>CHECK</p> <p>Alan Qin</p>				<p>DRAWN</p> <p>Mandy</p>				<p>DATE</p> <p>2019/09/18</p>				
					<p>PROJECT</p>								<p>TITLE</p> <p>2.54 mm Pin Header connectors</p>								
2020/03/16	B	EN20200316005	Update Drawing Frame	Mandy	Robing									UNIT	SCALE	SHEET	REV	NUMBER			
DATE	REV	ECN NO.	DESCRIPTION	MODIFY	APPROVAL									mm	1:1	1/1	B	A-195			

RoHS

This products can apply to the SWB Doc NO. QA-3-04-005 of Environmental&Material Management Rules



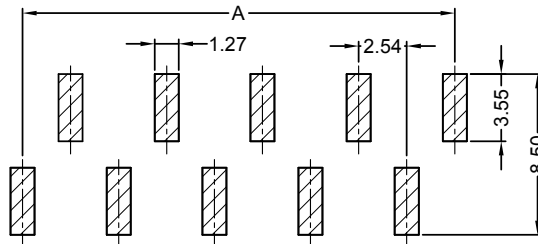
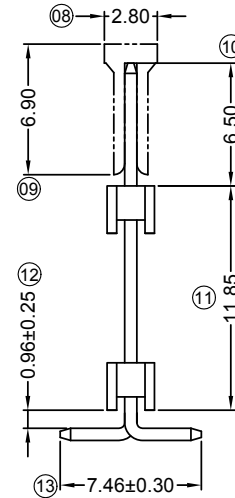
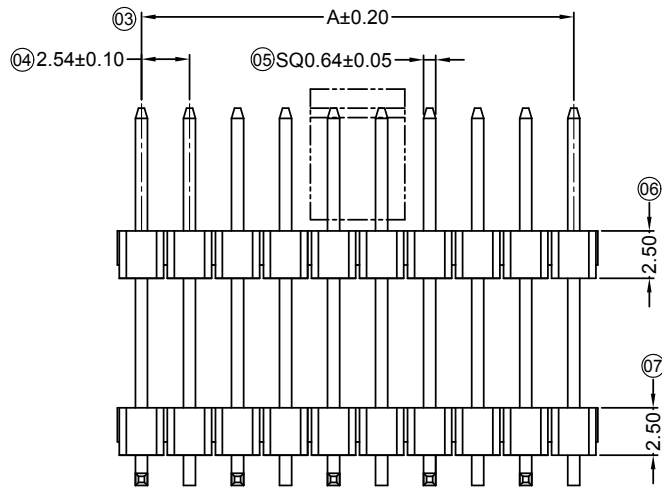
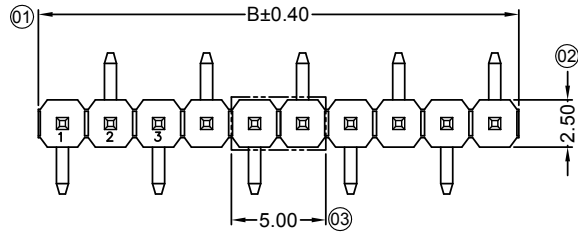
Specifications :

- Voltage rating: 250V AC / DC
- Current rating: 3A AC / DC
- Withstanding voltage: 1000V AC/minute
- Temperature range: -40°C~+105°C
- Insulation resistance: ≥1000MΩ
- Contact resistance: ≤20mΩ
- After environmental testing: ≤30mΩ
- Material(Pin): Brass
- Material(CAP): PA6T Black Halogen Free
- Mates With SWB Wafer: 6501FX

6501 W V S - XX H2 HF- 6T XX X XX -03
 ① ② ③ ④ ⑤ ⑥ ⑦ ⑧ ⑨ ⑩ ⑪ ⑫

- ① Series No.
- ② Category: W- Wafer
- ③ Connector Type: V-180°
- ④ Mounting Type: S-SMT
- ⑤ Row No.-Pin No. : XX-Single row
- ⑥ Special No.:H2-Double Plastic
- ⑦ HF-Halogen Free
- ⑧ Material: 6T-PA6T UL94V-0
- ⑨ Plating Category:
V01-All Area Gold Flash ; Ni: 50u" Min.
SW-Matte Tin100u" Min.; Ni: 50u" Min.
- ⑩ C-With CAP
- ⑪ Color: Balnk-Black
- ⑫ 03-6.50/11.85/7.46

Poles	Dimensions(mm)		Poles	Dimensions(mm)	
	A	B		A	B
02	2.54	5.08	15	35.56	38.10
03	5.08	7.62	16	38.10	40.64
04	7.62	10.16	17	40.64	43.18
05	10.16	12.70	18	43.18	45.72
06	12.70	15.24	19	45.72	48.26
07	15.24	17.78	20	48.26	50.80
08	17.78	20.32	21	50.80	53.34
09	20.32	22.86	22	53.34	55.88
10	22.86	25.40	23	55.88	58.42
11	25.40	27.94	24	58.42	60.96
12	27.94	30.48	25	60.96	63.50
13	30.48	33.02			
14	33.02	35.56			

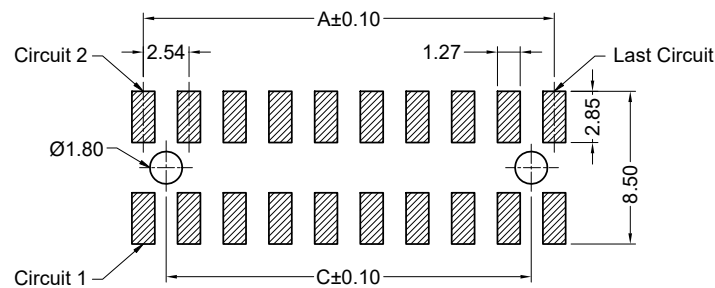
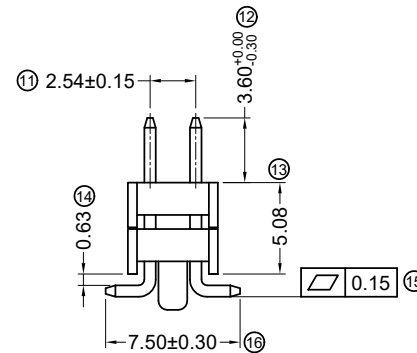
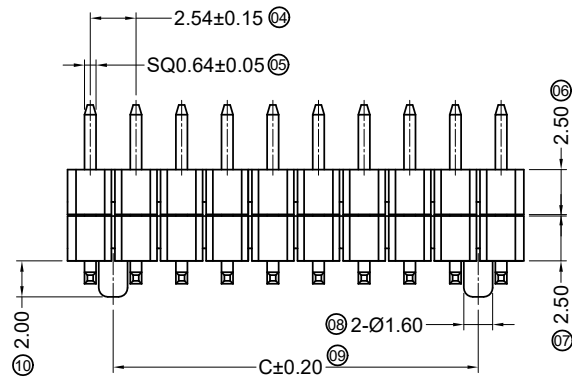
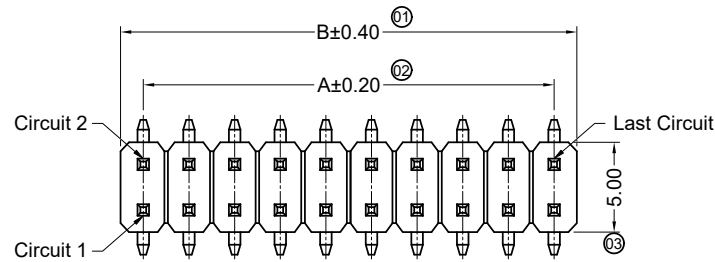


Recommended P.C.B Layout
 General Tolerance±0.05

					GENERAL TOLERANCE .X ±0.30 .XX ±0.20 .XXX ±0.10 X.° ±2° PROJECT 				东莞市思索连接器有限公司 SWB CONNECTORS CO.,LTD APPROVAL CHECK DRAWN DATE Robing Robing Joshua 2020/04/30				PART NO. 6501WVS-XXH2HF-6TXXXXX-03 TITLE 2.54mm PIN Header Connectors				
DATE	REV	ECN NO.	DESCRIPTION	MODIFY	APPROVAL	UNIT	SCALE	SHEET	REV	NUMBER							
1						mm	1:1	1/1	A	A-213							

RoHS

This products can apply to the SWB Doc NO. QA-3-04-005 of Environmental&Material Management Rules



Recommended P.C.B Layout
General Tolerance±0.05

Specifications :

- Voltage rating: 250V AC / DC
- Current rating: 3A AC / DC
- Withstanding voltage: 800V AC/minute
- Temperature range: -40°C~+105°C
- Insulation resistance: ≥1000MΩ
- Contact resistance: ≤20mΩ
- After environmental testing: ≤30mΩ
- Material(Pin): Brass
- Mates With SWB Female Header: 6501FX

6501 W V S - 2*XX H2 P - XX V01 XX - 01
① ②③④ ⑤ ⑥ ⑦ ⑧ ⑨ ⑩

- ① Series No.
- ② Category: W-wafer
- ③ Connector Type: V- Straight 180°
- ④ Mounting Type: S-SMT
- ⑤ Row No.-Pin No Per Row: 2*XX-2*02P~2*40P
- ⑥ Special No.: H2-Double plastic,P-Wiht Peg
- ⑦ Material: 6T-PA6T 94V-0 ; 9T-PA9T 94V-0
- ⑧ Plating Code: V01- Gold Flash
- ⑨ Color: Blank-Black Color
- ⑩ 01-3.60/2.50/7.50

Poles	Dimensions(mm)			Poles	Dimensions(mm)		
	A	B	C		A	B	C
2*02	2.54	5.08		2*22	53.34	55.88	50.80
2*03	5.08	7.62	2.54	2*23	55.88	58.42	53.34
2*04	7.62	10.16	5.08	2*24	58.42	60.96	55.88
2*05	10.16	12.70	7.62	2*25	60.96	63.50	58.42
2*06	12.70	15.24	10.16	2*26	63.50	66.04	60.96
2*07	15.24	17.78	12.70	2*27	66.04	68.58	63.50
2*08	17.78	20.32	15.24	2*28	68.58	71.12	66.04
2*09	20.32	22.86	17.78	2*29	71.12	73.66	68.58
2*10	22.86	25.40	20.32	2*30	73.66	76.20	71.12
2*11	25.40	27.94	22.86	2*31	76.20	78.74	73.66
2*12	27.94	30.48	25.40	2*32	78.74	81.28	76.20
2*13	30.48	33.02	27.94	2*33	81.28	83.82	78.74
2*14	33.02	35.56	30.48	2*34	83.82	86.36	81.28
2*15	35.56	38.10	33.02	2*35	86.36	88.90	83.82
2*16	38.10	40.64	35.56	2*36	88.90	91.44	86.36
2*17	40.64	43.18	38.10	2*37	91.44	93.98	88.90
2*18	43.18	45.72	40.64	2*38	93.98	96.52	91.44
2*19	45.72	48.26	43.18	2*39	96.52	99.06	93.98
2*20	48.26	50.80	45.72	2*40	99.06	101.60	96.52
2*21	50.80	53.34	48.26				

GENERAL TOLERANCE
.X ±0.30
.XX ±0.20
.XXX ±0.10
/
PROJECT
⊕ □



东莞市思索连接器有限公司
SWB CONNECTORS CO.,LTD

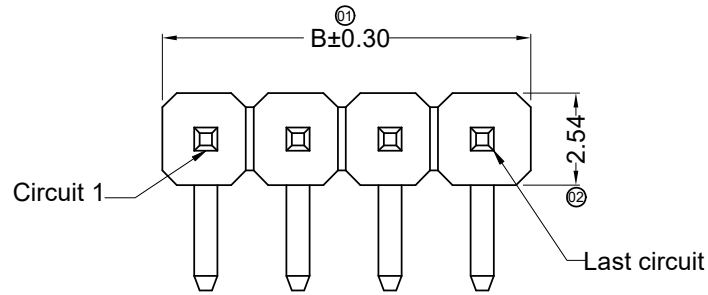
PART NO.				
6501WVS-2*XXH2P-XXV01-01				
TITLE				
2.54mm Pin Header connectors				
UNIT	SCALE	SHEET	REV	NUMBER
mm	1:1	1/1	A	A-268

DATE	REV	ECN NO.	DESCRIPTION	MODIFY	APPROVAL

APPROVAL	CHECK	DRAWN	DATE
Robing	Alan Qin	Mandy	2020/03/16

RoHS

This products can apply to the SWB Doc NO. QA-3-04-005 of Environmental&Material Management Rules

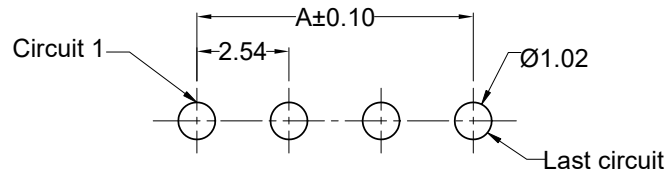
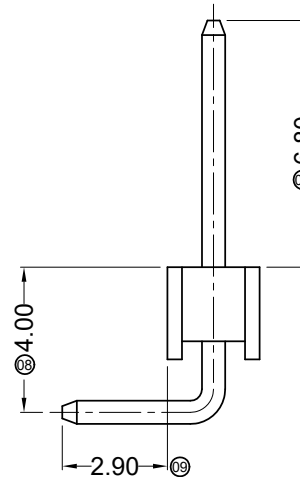
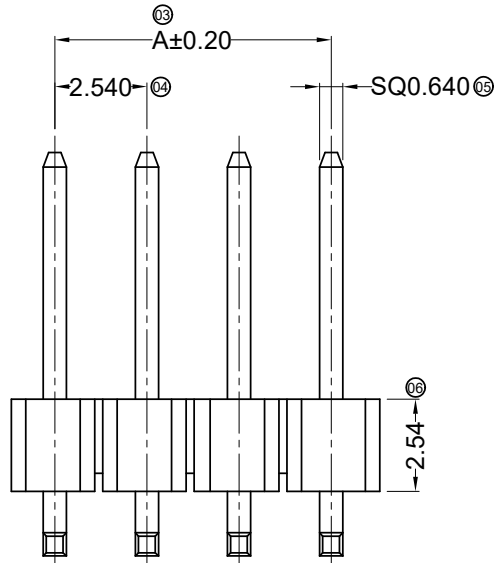


■ Specifications :

- Voltage rating: 250V AC / DC
- Current rating: 3A AC / DC
- Withstanding voltage: 800V AC/minute
- Temperature range: -40°C~+105°C
- Insulation resistance: ≥1000MΩ
- Contact resistance: ≤20mΩ
- After environmental testing: ≤30mΩ
- Material(Pin): Brass
- Mates With SWB Female Header:6501FX

6501 W R - XX X - 6T V01 XX- B
 ① ② ③ ④ ⑤ ⑥ ⑦ ⑧ ⑨

- ① Series No.
- ② Category: W-wafer
- ③ Connector Type:R-90°
- ④ Row No.-Pin No Per Row: XX-Single row
- ⑤ Special No.: Blank-ordinary
- ⑥ Material: 6T-PA6T 94V-0
- ⑦ Plating Code: V01- Gold Flash
- ⑧ Color: Blank-Black Color
- ⑩ B-6.80/2.54/2.90



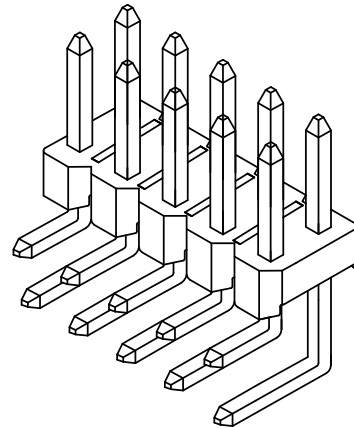
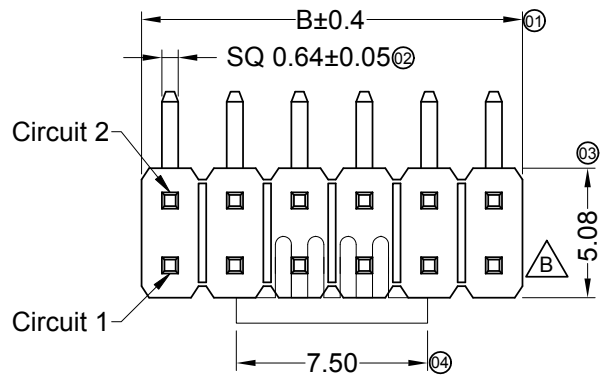
Recommended P.C.B Layout
 General Tolerance±0.05

Poles	Dimensions (mm)		Poles	Dimensions (mm)	
	A	B		A	B
01	--	2.54	21	50.80	53.34
02	2.54	5.08	22	53.34	55.88
03	5.08	7.62	23	55.88	58.42
04	7.62	10.16	24	58.42	60.96
05	10.16	12.70	25	60.96	63.50
06	12.70	15.24	26	63.50	66.04
07	15.24	17.78	27	66.04	68.58
08	17.78	20.32	28	68.58	71.12
09	20.32	22.86	29	71.12	73.66
10	22.86	25.40	30	73.66	76.20
11	25.40	27.94	31	76.20	78.74
12	27.94	30.48	32	78.74	81.28
13	30.48	33.02	33	81.28	83.82
14	33.02	35.56	34	83.82	86.36
15	35.56	38.10	35	86.36	88.90
16	38.10	40.64	36	88.90	91.44
17	40.64	43.18	37	91.44	93.98
18	43.18	45.72	38	93.98	96.52
19	45.72	48.26	39	96.52	99.06
20	48.26	50.80	40	99.06	101.60

						东莞市思索连接器有限公司 SWB CONNECTORS CO.,LTD				PART NO. 6501WR-XX-6TV01-B																			
						APPROVAL Smark				CHECK Joshua				DRAWN Luna				DATE 2013/08/16											
						GENERAL TOLERANCE .X ±0.30 .XX ±0.20 .XXX ±0.10 X.° ±2°				TITLE 2.54 mm Pin Header connectors																			
2020/03/16	B	EN20200316005	Update Drawing Frame	Mandy	Robing	PROJECT 				UNIT mm				SCALE 1:1				SHEET 1/1				REV B				NUMBER A-268			
DATE	REV	ECN NO.	DESCRIPTION	MODIFY	APPROVAL																								

RoHS

This products can apply to the SWB Doc NO. QA-3-04-005 of Environmental&Material Management Rules

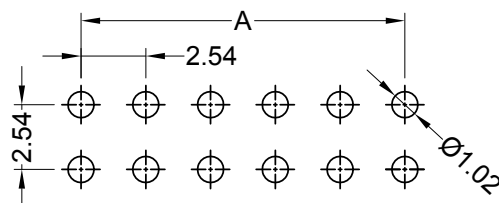
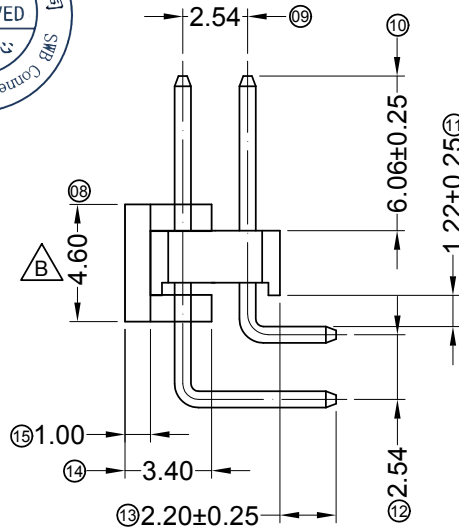
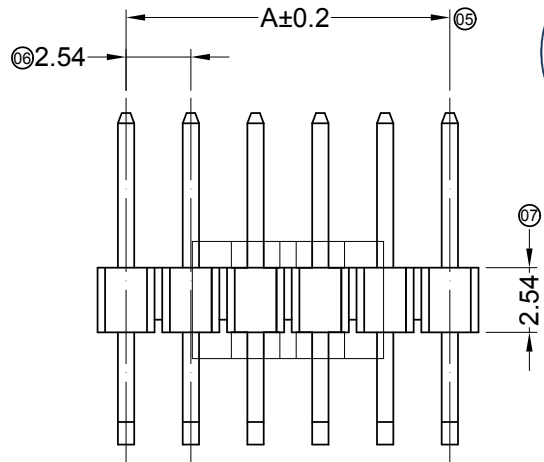


Specifications :

- Voltage rating: 250V AC / DC
- Current rating: 3A AC / DC
- Withstanding voltage: 800V AC/minute
- Temperature range: -25°C~+85°C
- Insulation resistance: ≥1000MΩ
- Contact resistance: ≤20mΩ
- After environmental testing: ≤30mΩ
- Material(Pin): Brass
- Material(CAP): LCP 94V-0 Black Halogen Free
- Mates With SWB 6501FX

6501 W R X-2*XX -LP XX XX -V
① ②③④ ⑤ ⑥ ⑦ ⑧ ⑨

- ① Series No.
- ② Category: W-Wafer
- ③ Connector Type: R- 90°
- ④ Mounting Type: Blank-DIP
- ⑤ Row No.-Pin No.: 2*XX-Double Row
- ⑥ Material: LP-LCP 94V-0 Halogen Free
- ⑦ Plating Category:
SW-Matte Tin 100u" Min. ; Ni 50u" Min.
V01-Contact Area Gold G/F ; Solder Area G/F ; Ni 50u" Min.
- ⑧ Color: Blank-Black color
- ⑨ V-6.06/2.54/2.20



Recommended P.C.B Layout
General Tolerance±0.05

Poles	Dimensions(mm)		Poles	Dimensions(mm)		Poles	Dimensions(mm)	
	A	B		A	B		A	B
2*02	2.54	5.08	2*15	35.56	38.10	2*28	68.58	71.12
2*03	5.08	7.62	2*16	38.10	40.64	2*29	71.12	73.66
2*04	7.62	10.16	2*17	40.64	43.18	2*30	73.66	76.20
2*05	10.16	12.70	2*18	43.18	45.72	2*31	76.20	78.74
2*06	12.70	15.24	2*19	45.72	48.26	2*32	78.74	81.28
2*07	15.24	17.78	2*20	48.26	50.80	2*33	81.28	83.82
2*08	17.78	20.32	2*21	50.80	53.34	2*34	83.82	86.36
2*09	20.32	22.86	2*22	53.34	55.88	2*35	86.36	88.90
2*10	22.86	25.40	2*23	55.88	58.42	2*36	88.90	91.44
2*11	25.40	27.94	2*24	58.42	60.96	2*37	91.44	93.98
2*12	27.94	30.48	2*25	60.96	63.50	2*38	93.98	96.52
2*13	30.48	33.02	2*26	63.50	66.04	2*39	96.52	99.06
2*14	33.02	35.56	2*27	66.04	68.58	2*40	99.06	101.60

2020/05/19		B	ER20200520003	1.CAP width dimension update to 4.60; Remove the bottom chamfering of the CAP 2.Add Prognostic slot	Mali	Joshua	东莞市思索连接器有限公司 SWB CONNECTORS CO.,LTD				PART NO. 6501WR-2*XX-LPXXXX-V TITLE 2.54 mm Pin Header connectors				
DATE	REV	ECN NO.	DESCRIPTION	MODIFY	APPROVAL	PROJECT	APPROVAL	CHECK	DRAWN	DATE	UNIT	SCALE	SHEET	REV	NUMBER
1									Joshua	2018/08/13	mm	1:1	1/1	B	A-213

RoHS

This products can apply to the SWB Doc NO. QA-3-04-005 of Environmental&Material Management Rules



■ Specifications :

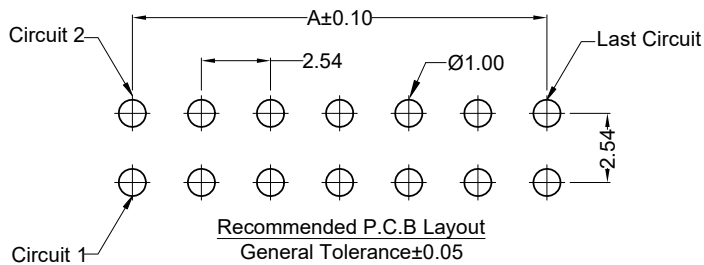
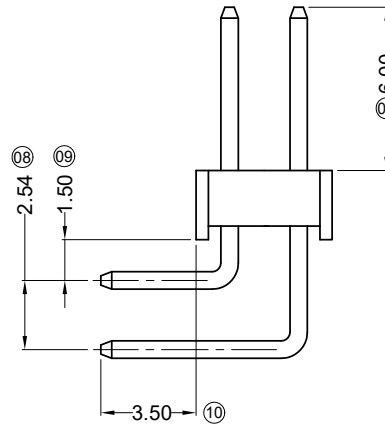
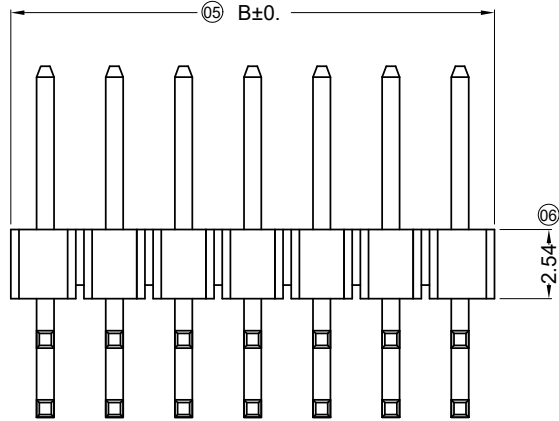
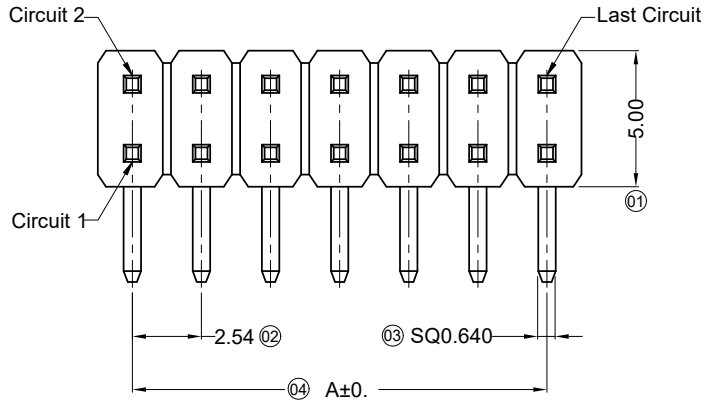
- Voltage rating: 250V AC / DC
- Current rating: 3A AC / DC
- Withstanding voltage: 800V AC/minute
- Temperature range: -40°C~+105°C
- Insulation resistance: ≥1000MΩ
- Contact resistance: ≤20mΩ
- After environmental testing: ≤30mΩ

- Material(Pin):Brass
- Mates with SWB Female Header: 6501FX

6501 W R X-2*XX X-XX V01 XX-B

① ② ③ ④ ⑤ ⑥ ⑦ ⑧ ⑨ ⑩

- ① Series No.
- ② Category: W-wafer
- ③ Connector Type: R- Right Angle 90°
- ④ Mouting Type: Blank-DIP
- ⑤ Row No.-Pin No Per Row: 2*XX-2*02P~2*40P
- ⑥ Special No.: Blank-ordinary
- ⑦ Material: 6T-PA6T 94V-0 ;9T-PA9T 94V-0
- ⑧ Plating Code: V01- Gold Flash
- ⑨ Color: Blank-Black color
- ⑩ B-6.00/3.50

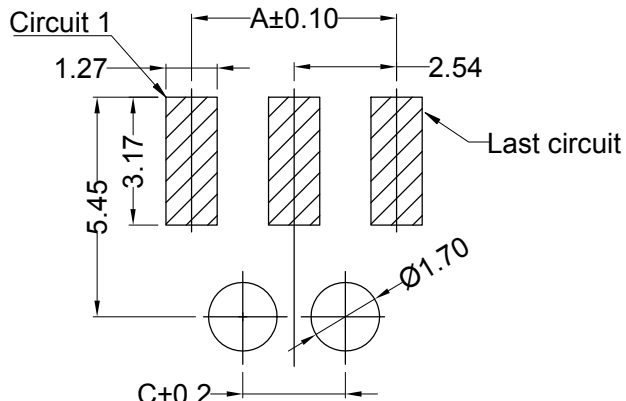
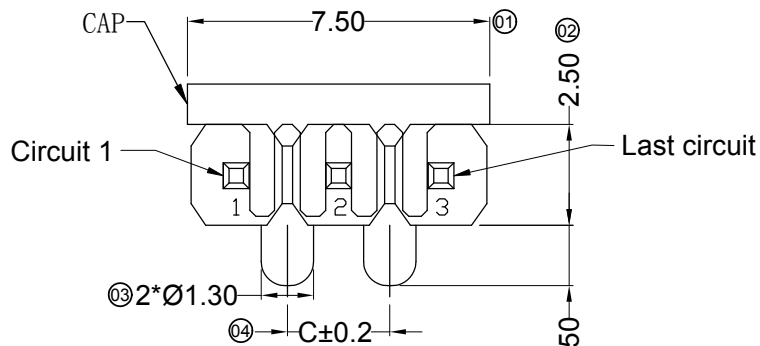


Poles	Dimensions(mm)		Poles	Dimensions(mm)		Poles	Dimensions(mm)	
	A	B		A	B		A	B
2*02	2.54	5.08	2*15	35.56	38.10	2*28	68.58	71.12
2*03	5.08	7.62	2*16	38.10	40.64	2*29	71.12	73.66
2*04	7.62	10.16	2*17	40.64	43.18	2*30	73.66	76.20
2*05	10.16	12.70	2*18	43.18	45.72	2*31	76.20	78.74
2*06	12.70	15.24	2*19	45.72	48.26	2*32	78.74	81.28
2*07	15.24	17.78	2*20	48.26	50.80	2*33	81.28	83.82
2*08	17.78	20.32	2*21	50.80	53.34	2*34	83.82	86.36
2*09	20.32	22.86	2*22	53.34	55.88	2*35	86.36	88.90
2*10	22.86	25.40	2*23	55.88	58.42	2*36	88.90	91.44
2*11	25.40	27.94	2*24	58.42	60.96	2*37	91.44	93.98
2*12	27.94	30.48	2*25	60.96	63.50	2*38	93.98	96.52
2*13	30.48	33.02	2*26	63.50	66.04	2*39	96.52	99.06
2*14	33.02	35.56	2*27	66.04	68.58	2*40	99.06	101.60

					GENERAL TOLERANCE .X ±0.30 .XX ±0.20 .XXX ±0.10 X.° ±2°				东莞市思索连接器有限公司 SWB CONNECTORS CO.,LTD				PART NO. 6501WR-2*XX-XXV01-B								
					APPROVAL Jacky				CHECK Jacky				DRAWN sylvia				DATE 2015/06/22				
					PROJECT 				TITLE 2.54 mm Pin Header connectors					UNIT SCALE SHEET REV NUMBER mm 1:1 1/1 B A-268							
2020/03/16	B	EN20200316005	Update Drawing Frame	Mandy	Robing																
DATE	REV	ECN NO.	DESCRIPTION	MODIFY	APPROVAL																

RoHS

This products can apply to the SWB Doc NO. QA-3-04-005 of Environmental&Material Management Rules



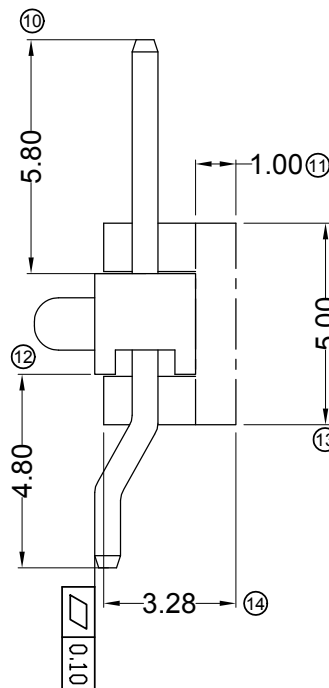
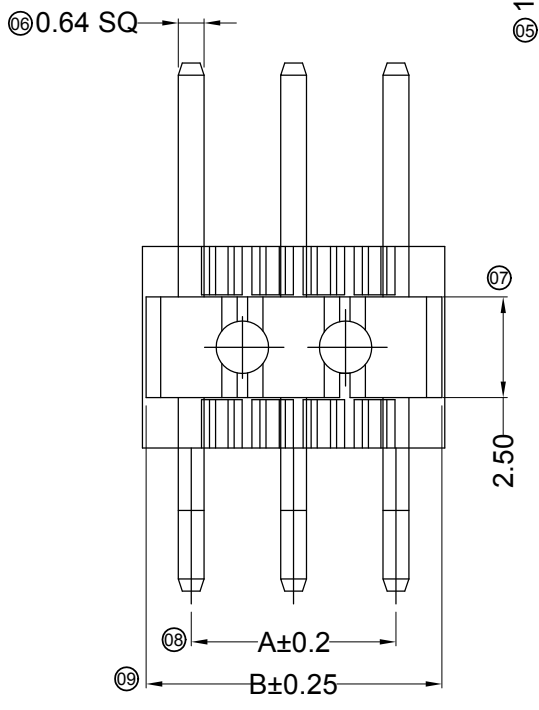
Recommended P.C.B Layout
General Tolerance±0.05

Specifications :

- Voltage rating: 250V AC / DC
- Current rating: 3A AC / DC
- Withstanding voltage: 500V AC/minute
- Temperature range: -40°C~+105°C
- Insulation resistance: ≥1000MΩ
- Contact resistance: ≤20mΩ
- After environmental testing: ≤30mΩ
- Material(Pin): Brass
- Mates With SWB Female Header:6501FX

6501 W R S - XX P - 9T XXX X XX- X
① ② ③ ④ ⑤ ⑥ ⑦ ⑧ ⑨ ⑩ ⑪

- ① Series No.
- ② Category: W-wafer
- ③ Connector Type:R-90°
- ④ Mouting Type: S -SMT
- ⑤ Row No.-Pin No Per Row: XX-Single row
- ⑥ Special No.: P- With Post
- ⑦ Material.: 9T-PA9T 94V-0
- ⑧ Plating Code: V01- All Area Gold Flash; Ni 50"Min.
G30-Contact Area Au 30u" Min.;
Solder Area Matte Tin100"Min.;Ni 50"Min.
- ⑨ C- With CAP Blank-Without CAP
- ⑩ Color: Blank-Black Color
- ⑪ 01-5.80/2.50/4.80



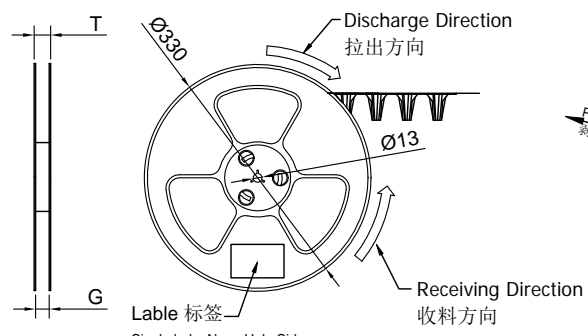
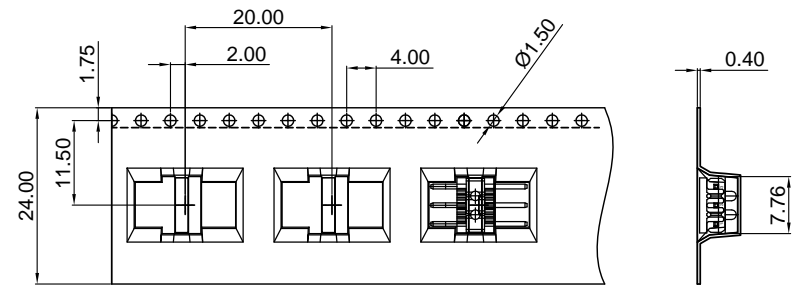
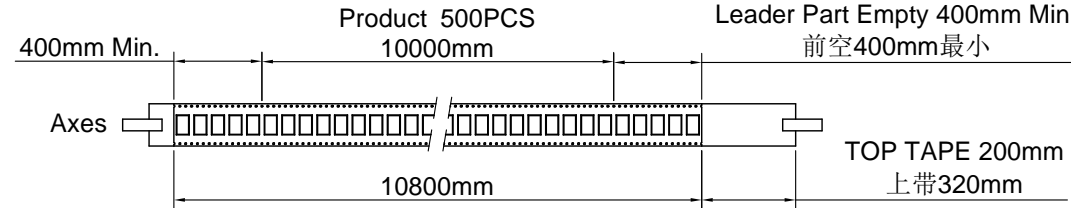
Pin位	尺寸 (mm)			Pin位	尺寸 (mm)		
	A	B	C		A	B	C
01	--	2.26	--	11	25.40	27.66	22.86
02	2.54	4.80	--	12	27.94	30.20	25.40
03	5.08	7.34	2.54	13	30.48	32.74	27.94
04	7.62	9.88	5.08	14	33.02	35.28	30.48
05	10.16	12.42	7.62	15	35.56	37.82	33.02
06	12.70	14.96	10.16	16	38.10	40.36	35.56
07	15.24	17.50	12.70	17	40.64	42.90	38.10
08	17.78	20.04	15.24	18	43.18	45.44	40.64
09	20.32	22.58	17.78	19	45.72	47.98	43.18
10	22.86	25.12	20.32	20	48.26	50.52	45.72

					<p>GENERAL TOLERANCE</p> <p>.X ±0.30</p> <p>.XX ±0.20</p> <p>.XXX ±0.10</p> <p>X.° ±2°</p>				<p>APPROVAL</p> <p>Robing Joshua Rick</p>				<p>DATE</p> <p>2020/02/24</p>			
					<p>PROJECT</p> <p>⊕ □</p>				<p>APPROVAL</p> <p>Robing Joshua Rick</p>				<p>DATE</p> <p>2020/02/24</p>			
DATE	REV	ECN NO.	DESCRIPTION	MODIFY	APPROVAL	<p>东莞市思索连接器有限公司</p> <p>SWB CONNECTORS CO.,LTD</p>				<p>PART NO.</p> <p>6501WRS-XXP-9TV01C-01</p>						
										<p>TITLE</p> <p>2.54 mm Pin Header connectors</p>						
UNIT		SCALE	SHEET	REV	NUMBER	UNIT		SCALE	SHEET	REV	NUMBER					
mm		1:1	1/1	A	A-013	mm		1:1	1/1	A	A-013					

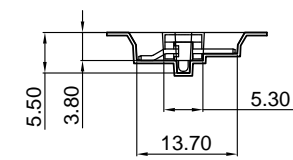
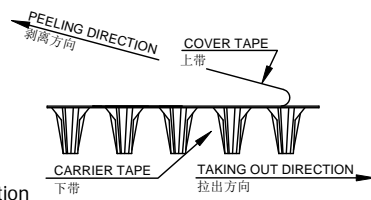
RoHS

本产品符合我司QA-3-04-005
环境管理物质标准规范

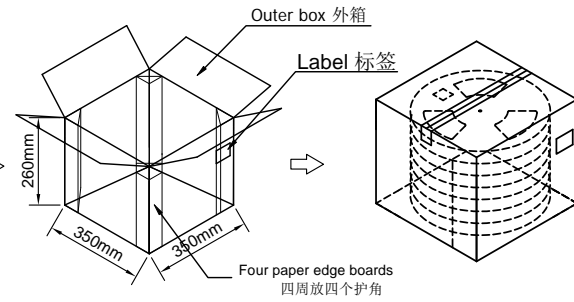
包装图



COVER TAPE PEEL STRENGTH:20-120g
上带剥离力量: 20-120g
速度 PEEL SPEED:300mm/minute



Vacuum packing
真空包装
Drier
干燥剂放两包10g



- Note:
- Carrier Camber Is Within 1mm In 100mm ; 带长100mm内容许弯曲度1mm
 - 10 Sprocket Hole Pitch Cumulative Tolerance±0.2MM ; 圆孔十个孔距离累计允许公差为±0.2mm
 - Materiaal for PS ; 材质为PS材质; Color颜色:透明色
 - bracer保护带: Color颜色:Nature透明;厚度0.40mm最小
 - Thinkess=0.40±0.05 ; 材料厚度为0.40±0.05mm
 - Cover Tape上带: 冷封
 - Carton material纸箱材质:K=K; Carton Thickness纸箱厚度: 6~7mm

Part No.	W	S	F	T (MAX)	G (MAX)	REEL /PCS	CARTON /R	CARTON /PCS
ZD6501WRS-XXPHF 6501WRS-XXP-9TV01C-01	24	/	11.50	28.50	24.40	500	8R	4000

日期	版次	变更编号	变更内容说明	变更人	核准

东莞市思索连接器有限公司
SWB CONNECTORS CO.,LTD

核准: Robing 审查: Robing 制作: Mali 日期: 2020/04/28

料号: PPN:6501WRS-XXP-9TV01C-01
CTN: ZD6501WRS-XXPHF

名称: 2.54mm Header 90° Package

单位	比例	页次	版本	编号
MM	1:1	1/1	A	A-013