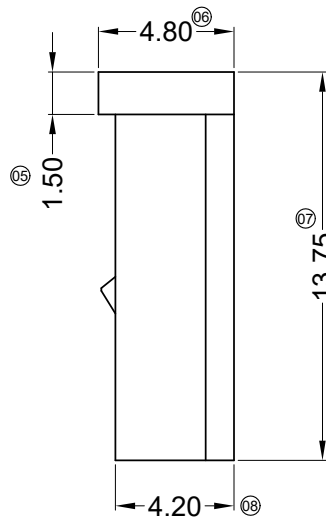
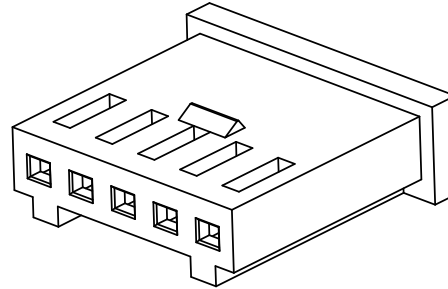
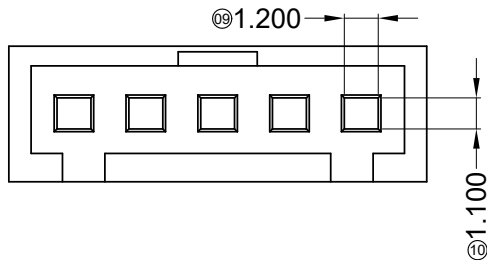
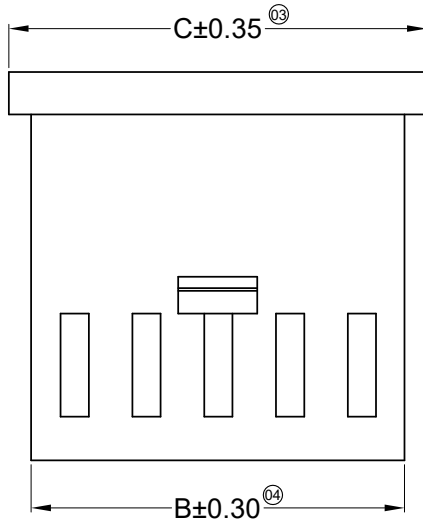
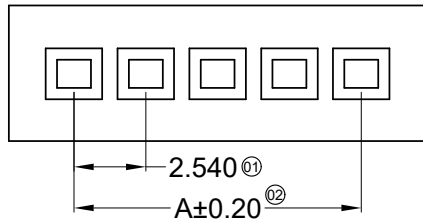


RoHS

This products can apply to the SWB Doc NO. QA-3-04-005 of Environmental&Material Management Rules



■ Specifications :

- Voltage rating: 250V AC / DC
- Current rating: 3A AC / DC
- Withstanding voltage: 800V AC/minute
- Temperature range: -25°C~+85°C
- Insulation resistance: ≥1000MΩ
- Contact resistance: ≤10mΩ
- After environmental testing: ≤20mΩ
- Suitable SWB Terminal: 2530T
- Mates With SWB Wafer: 2530W

2530 H X-XX X-N0 XX

① ②③④⑤⑥⑦


- ① Series No.
- ② Category: H-HSG
- ③ Connector Type: Blank-ordinary
- ④ Row No.-Pin No Per Row: XX-02~20P
- ⑤ Plug the Pin & special No.: Blank-ordinary
- ⑥ Material: N0-PA66 94V-0
- ⑦ Color: Blank-Natural

Poles	Dimensions(mm)			Poles	Dimensions(mm)		
	A	B	C		A	B	C
02	2.54	5.60	7.10	13	30.48	33.54	35.04
03	5.08	8.14	9.64	14	33.02	36.08	37.58
04	7.62	10.68	12.18	15	35.56	38.62	40.12
05	10.16	13.22	14.72	16	38.10	41.16	42.66
06	12.70	15.76	17.26	17	40.64	43.70	45.20
07	15.24	18.30	19.80	18	43.18	46.24	47.74
08	17.78	20.84	22.34	19	45.72	48.78	50.28
09	20.32	23.84	24.88	20	48.26	51.32	52.82
10	22.86	25.92	27.42	21	50.80	53.86	55.36
11	25.40	28.46	29.96	22	53.34	56.40	57.90
12	27.94	31.00	32.50				



DATE	REV	ECN NO.	DESCRIPTION	MODIFY	APPROVAL
2020/03/17	D	EN20200317001	Update Drawing Frame	Alan qin	Robing
2013/08/09	C		Modify drawing frame format	Luna	Jova Lau

GENERAL TOLERANCE	
.X	±0.30
.XX	±0.20
.XXX	±0.10
X.°	±2°


东莞市思索连接器有限公司
SWB CONNECTORS CO.,LTD
 APPROVAL: Robing CHECK: Jova Lau DRAWN: Liu Yan DATE: 2007/05/03

PART NO.				
2530H-XX-N0				
TITLE				
2.54mm Crimp Style Connectors				
UNIT	SCALE	SHEET	REV	NUMBER
mm	1:1	1/1	D	A-089

RoHS

This products can apply to the SWB Doc NO. QA-3-04-005 of Environmental&Material Management Rules



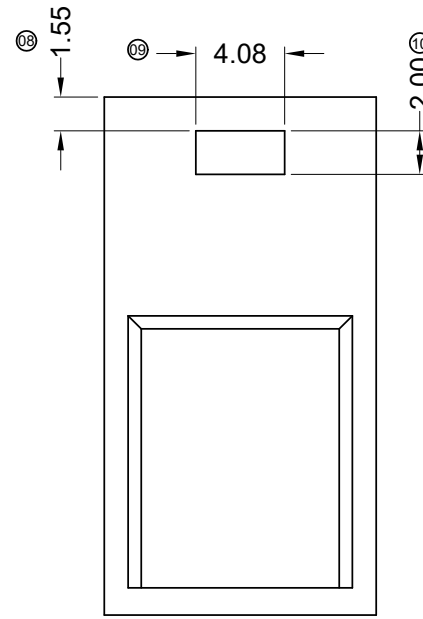
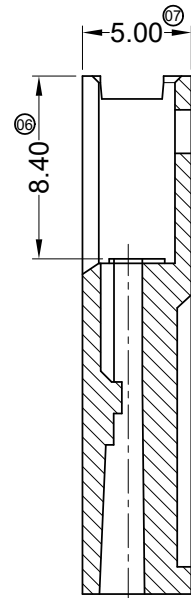
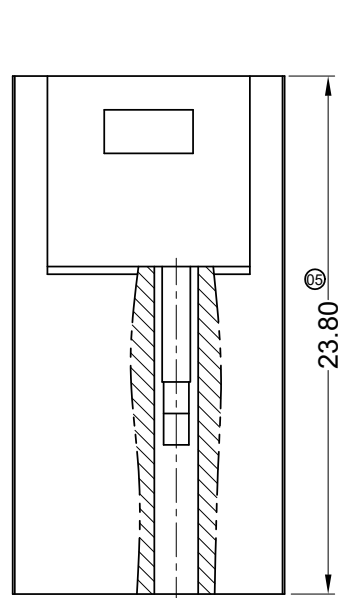
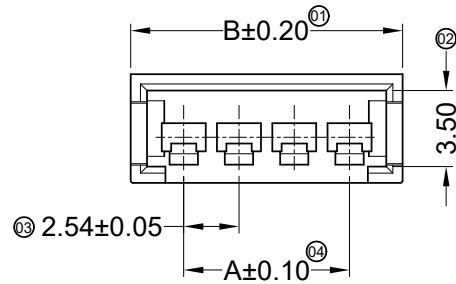
■ Specifications :

- Voltage rating: 250V AC / DC
- Current rating: 3A AC / DC
- Withstanding voltage: 800V AC/minute
- Temperature range: -25°C~+85°C
- Insulation resistance: ≥1000MΩ
- Contact resistance: ≤10mΩ
- After environmental testing: ≤20mΩ
- Suitable SWB Terminal: 2530TM
- Mates With SWB Housing: 2530H-XX

2530 H F - XX X-PT XX

- ① Series No.
- ② Category: H-HSG
- ③ Connector Type: F-Female HSG
- ④ Row No.-Pin No Per Row: 2*XX-2*02P~2*20P
- ⑤ Plug The Pin & Special No.: Blank-Ordinary
- ⑥ Material: PT-PBT 94V-0
- ⑦ Color: Blank-Natural

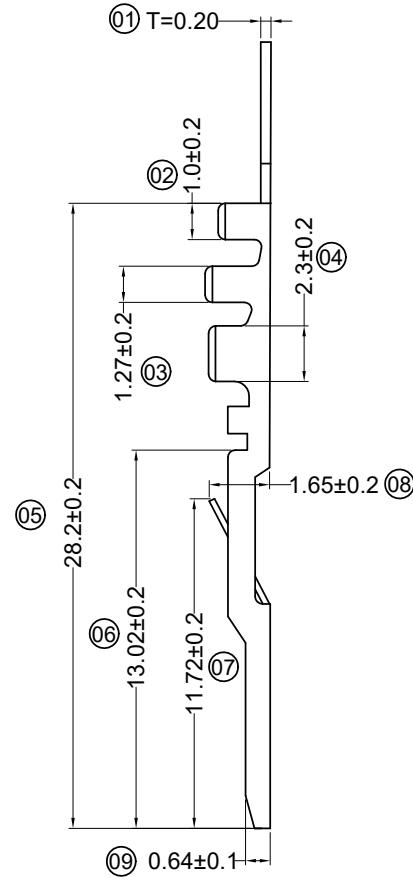
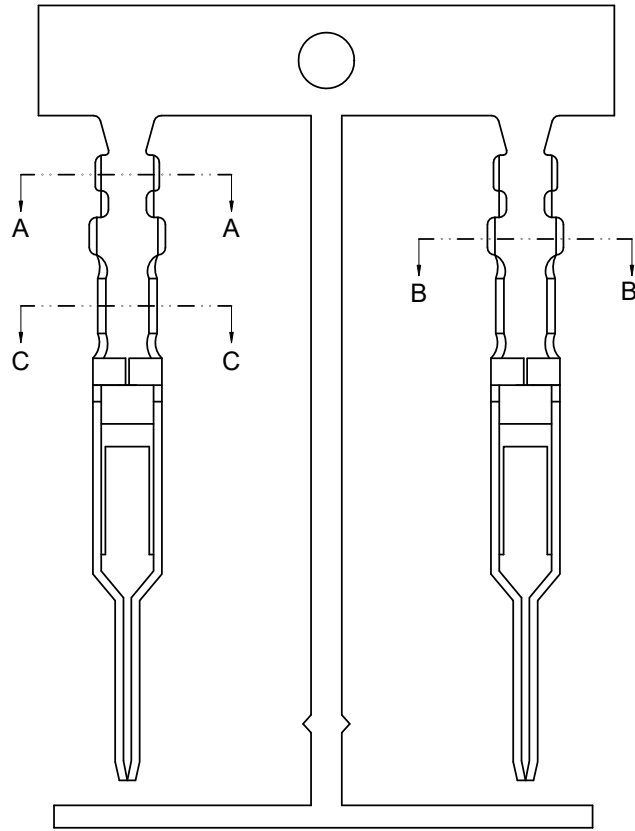
Poles	Dimensions(mm)		Poles	Dimensions(mm)	
	A	B		A	B
2	2.54	7.42	12	27.94	32.82
3	5.08	9.96	13	30.48	35.36
4	7.62	12.50	14	33.02	37.90
5	10.16	15.04	15	35.56	40.44
6	12.70	17.58	16	38.10	42.98
7	15.24	20.12	17	40.64	45.52
8	17.78	22.66	18	43.18	48.06
9	20.32	25.20	19	45.72	50.06
10	22.86	27.74	20	48.26	53.14
11	25.40	30.28			



						<p>GENERAL TOLERANCE</p> <p>.X ±0.30</p> <p>.XX ±0.20</p> <p>.XXX ±0.10</p> <p>X.° ±2°</p>				<p>东莞市思索连接器有限公司</p> <p>SWB CONNECTORS CO.,LTD</p>				<p>PART NO. 2530HF-XX-PT</p>												
						<p>APPROVAL</p> <p>Robing</p>				<p>CHECK</p> <p>Jova Lau</p>				<p>DRAWN</p> <p>sylvia</p>				<p>DATE</p> <p>2016/06/24</p>				<p>TITLE</p> <p>2.54 mm Crimp Style Connectors</p>				
2020/03/17	B	EN20200317001	Update Drawing Frame	Alan qin	Robing	UNIT		SCALE		SHEET		REV		NUMBER												
DATE	REV	ECN NO.	DESCRIPTION	MODIFY	APPROVAL	mm	1:1	1/1	B	A-106																

RoHS

This products can apply to the SWB Doc NO. QA-3-04-005 of Environmental&Material Management Rules



■ Specifications :

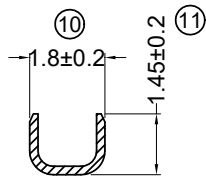
- Voltage rating: 250V AC / DC
- Current rating: 3A AC / DC
- Withstanding voltage: 800V AC/minute
- Temperature range: -25°C~+85°C
- Insulation resistance: ≥1000MΩ
- Contact resistance: ≤10mΩ
- After environmental testing: ≤20mΩ

- Wire Size: AWG #22~26
- Insulation O.D.: 1.55mm (Max)
- Used In SWB Housing: 2530H

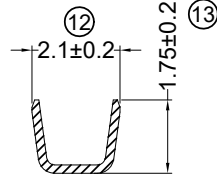
2530 T M-X SN X-X

① ② ③ ④ ⑤ ⑥ ⑦

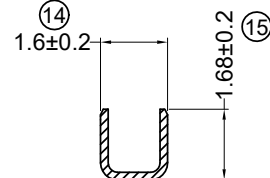
- ① Series Number
- ② Category: T-Terminal
- ③ Shape: M-Male
- ④ Material: P-Phosphor Bronze B-Brass
- ⑤ Plating Code: SN-Ni 30u" Min Bright tin 70u" Min
- ⑥ Plating Method: B-Plating Before Stamping
- ⑦ Mold No./Mark/Special No. : Blank-Ordinary



SECTION A-A
SCALE 1 : 1



SECTION B-B
SCALE 1 : 1



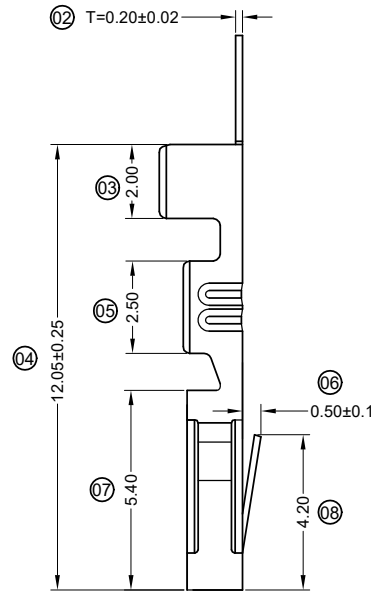
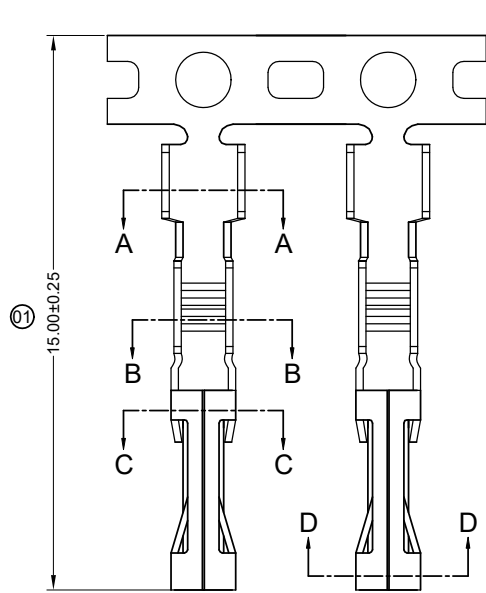
SECTION C-C
SCALE 1 : 1



					<p>GENERAL TOLERANCE</p> <p>.X ±0.30</p> <p>.XX ±0.20</p> <p>.XXX ±0.10</p> <p>X.° ±2°</p>				<p>东莞市思索连接器有限公司</p> <p>SWB CONNECTORS CO.,LTD</p>				<p>PART NO.</p> <p>2530TM-XSN</p>				
<p>2020/03/17 E EN20200317001 Update Drawing Frame Alan qin Robing</p>					<p>APPROVAL CHECK DRAWN DATE</p>				<p>TITLE</p> <p>2.54 mm Crimp Style Connectors</p>								
<p>2015/05/11 D Modify drawing frame format jian.He Success</p>					<p>Robing Sun Kaibao Liu Yan 2007/05/03</p>				<p>UNIT SCALE SHEET REV NUMBER</p> <p>mm 1 : 1 1/1 E A-093</p>								
DATE	REV	ECN NO.	DESCRIPTION	MODIFY	APPROVAL	PROJECT											

RoHS

This products can apply to the SWB Doc NO. QA-3-04-005 of Environmental&Material Management Rules



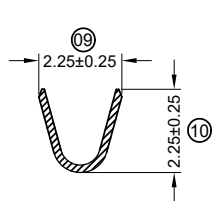
■ Specifications :

- Voltage rating: 250V AC / DC
- Current rating: 3A AC / DC
- Withstanding voltage: 800V AC/minute
- Temperature range: -25°C~+85°C
- Insulation resistance: ≥1000MΩ
- Contact resistance: ≤10mΩ
- After environmental testing: ≤20mΩ
- Wire Size: AWG #22~26
- Insulation O.D.: 1.55mm (Max)
- Used In SWB Housing: 2530H

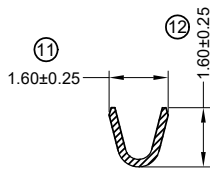
2530 T F-P SN X-A
① ② ③ ④ ⑤ ⑥ ⑦



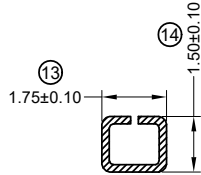
- ① Series Number
- ② Category: T-Terminal
- ③ Shape: F-Fmale
- ④ Material: P-Phosphor Bronze
- ⑤ Plating Code: SN-Ni 30u" Min Bright tin 70u" Min
- ⑥ Plating Method: B-Plating Before Stamping
- ⑦ Mold No./Mark/Special No. : A-Single Strip



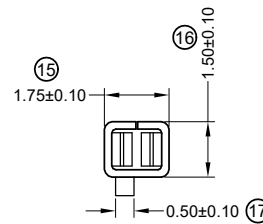
SECTION A-A
SCALE 1 : 1



SECTION B-B
SCALE 1 : 1



SECTION C-C
SCALE 1 : 1

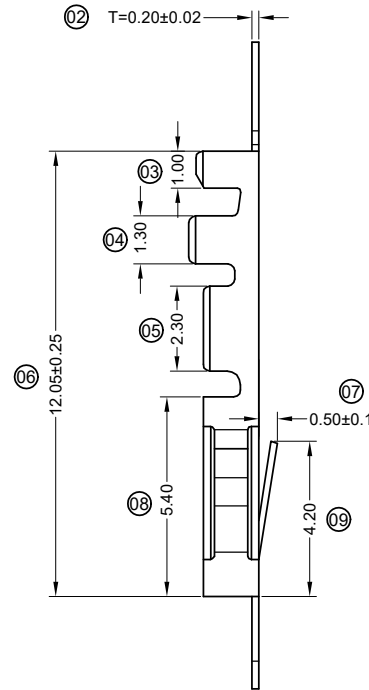
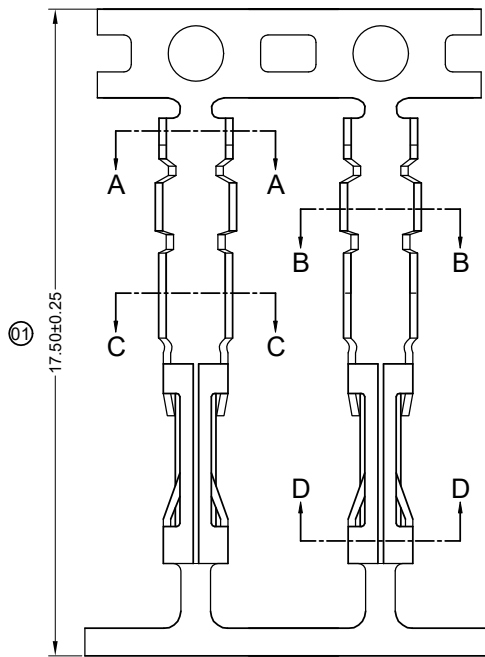


SECTION D-D
SCALE 1 : 1

2020/05/12	F	EN20200512003	Update the drawing according to the material object	Alan qin	Robing	GENERAL TOLERANCE .X ±0.30 .XX ±0.20 .XXX ±0.10 X.° ±2° PROJECT 	东莞市思索连接器有限公司 SWB CONNECTORS CO.,LTD				PART NO. 2530TF-PSN-A				
2020/03/17	E	EN20200317001	Update Drawing Frame	Alan qin	Robing						TITLE 2.54 mm Crimp Style Connectors				
2015/05/11	D		Modify drawing frame format	jian.He	Jova Lau		APPROVAL	CHECK	DRAWN	DATE					
DATE	REV	ECN NO.	DESCRIPTION	MODIFY	APPROVAL		Robing	Alan qin	Liu qiu xiang	2007/05/03	UNIT	SCALE	SHEET	REV	NUMBER
										mm	1:1	1/1	F	A-053	

RoHS

This products can apply to the SWB Doc NO. QA-3-04-005 of Environmental&Material Management Rules



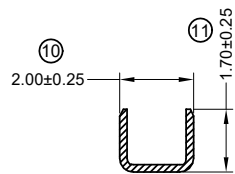
Specifications :

- Voltage rating: 250V AC / DC
- Current rating: 3A AC / DC
- Withstanding voltage: 800V AC/minute
- Temperature range: -25°C~+85°C
- Insulation resistance: ≥1000MΩ
- Contact resistance: ≤10mΩ
- After environmental testing: ≤20mΩ

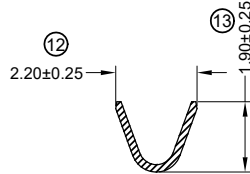
- Wire Size: AWG #22~26
- Insulation O.D.: 1.55mm (Max)
- Used In SWB Housing: 2530H

2530 T F-P SN X-X
 ① ② ③ ④ ⑤ ⑥ ⑦

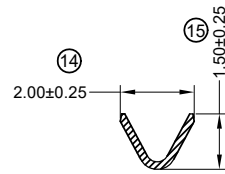
- ① Series Number
- ② Category: T-Terminal
- ③ Shape: F-Fmale
- ④ Material: P-Phosphor Bronze
- ⑤ Plating Code: SN-Ni 30u" Min Bright tin 70u" Min
G10- Contact Area Gold 10u"Au
- ⑥ Plating Method: B-Plating Before Stamping
- ⑦ Mold No./Mark/Special No. : Blank-Ordinary



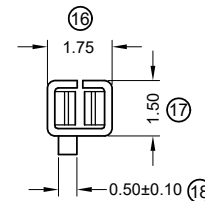
SECTION A-A
SCALE 1 : 1



SECTION B-B
SCALE 1 : 1



SECTION C-C
SCALE 1 : 1

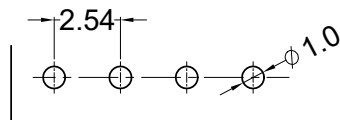
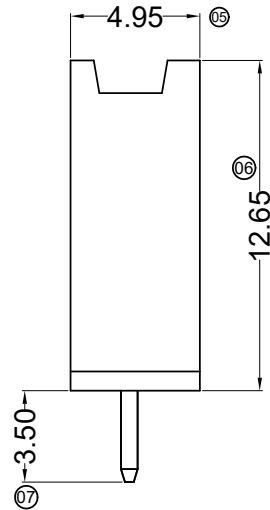
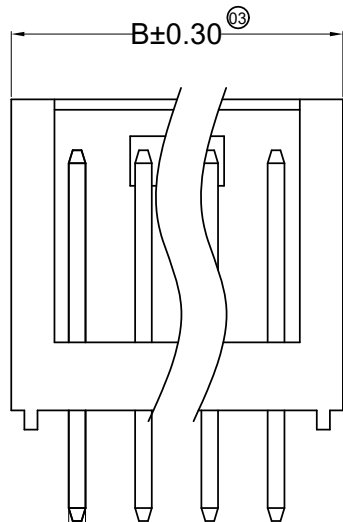
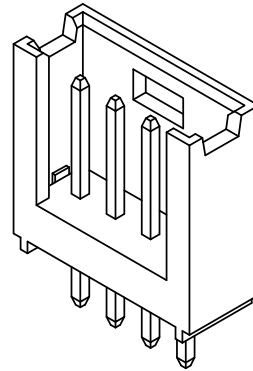
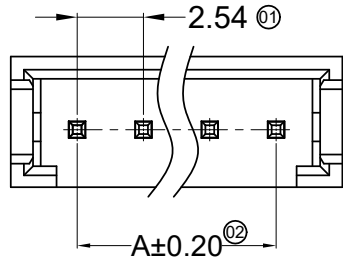


SECTION D-D
SCALE 1 : 1

2020/05/12	F	EN20200512003	Update the drawing according to the material object	Alan qin	Robing	东莞市思索连接器有限公司 SWB CONNECTORS CO.,LTD	PART NO. 2530TF-PXXX				
2020/03/17	E	EN20200317001	Update Drawing Frame	Alan qin	Robing		TITLE 2.54 mm Crimp Style Connectors				
2015/05/11	D		Modify drawing frame format	jian.He	Success		APPROVAL	CHECK	DRAWN	DATE	
DATE	REV	ECN NO.	DESCRIPTION	MODIFY	APPROVAL		Robing	Alan qin	Liu qiu xiang	2007/05/03	
						PROJECT	UNIT	SCALE	SHEET	REV	NUMBER
							mm	1 : 1	1/1	F	A-053

RoHS

This products can apply to the SWB Doc NO. QA-3-04-005 of Environmental&Material Management Rules



Recommended P.C.B Layout
General Tolerance±0.05

■ Specifications :

- Voltage rating: 250V AC / DC
- Current rating: 3A AC / DC
- Withstanding voltage: 800V AC/minute
- Temperature range: -25°C~+85°C
- Insulation resistance: ≥1000MΩ
- Contact resistance: ≤10mΩ
- After environmental testing: ≤20mΩ
- Material(Pin): Brass
- Mates With SWB Housing: 2530H

2530 W V XX- XX X-PTS N XX

① ②③④ ⑤ ⑥⑦⑧ ⑨

- ① Series No.
- ② Category: W-Wafer
- ③ Connector Type: V-Straight 180°
- ④ Mouting Type: Blank-DIP
- ⑤ Row No.-Pin No Per Row: XX-02~22P
- ⑥ Special No.: Blank-Ordinary
- ⑦ Material: PT-PBT 94V-0
- ⑧ Plating Code: SN-Bright Tin
- ⑨ Color: Blank-Black ; RE-Red ; WH-White

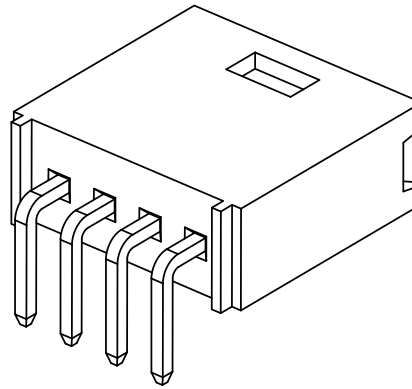
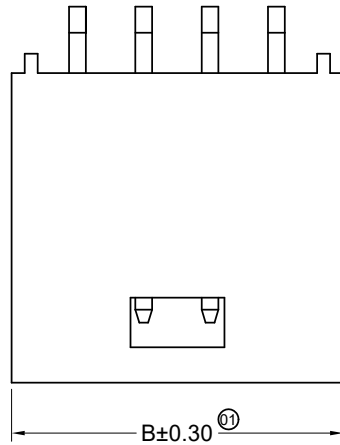
Poles	Dimensions(mm)		Poles	Dimensions(mm)	
	A	B		A	B
02	2.54	7.70	13	30.48	35.60
03	5.08	10.20	14	33.02	38.10
04	7.62	12.70	15	35.56	40.70
05	10.16	15.20	16	38.10	43.20
06	12.70	17.80	17	40.64	45.70
07	15.24	20.30	18	43.18	48.20
08	17.78	22.90	19	45.72	50.70
09	20.32	25.40	20	48.26	53.20
10	22.86	28.00	22	53.34	58.50
11	25.40	30.50			
12	27.94	33.10			



						<p>GENERAL TOLERANCE</p> <p>.X ±0.30</p> <p>.XX ±0.20</p> <p>.XXX ±0.10</p> <p>X.° ±2°</p>				<p>东莞市思索连接器有限公司</p> <p>SWB CONNECTORS CO.,LTD</p>				<p>PART NO.</p> <p>2530WV-XX-PTS NXX</p>							
						<p>APPROVAL</p> <p>Smark</p>				<p>CHECK</p> <p>Tang</p>				<p>DRAWN</p> <p>Yuwei</p>				<p>DATE</p> <p>2017/03/17</p>			
						<p>PROJECT</p> <p>Smark</p>				<p>Tang</p>				<p>Yuwei</p>				<p>2017/03/17</p>			
2020/03/17	E	EN20200317001	Update Drawing Frame	Alan qin	Robing									<p>TITLE</p> <p>2.54mm Crimp Style Connectors</p>							
DATE	REV	ECN NO.	DESCRIPTION	MODIFY	APPROVAL									<p>UNIT</p> <p>mm</p>							
														<p>SCALE</p> <p>1:1</p>							
														<p>SHEET</p> <p>1:1</p>							
														<p>REV</p> <p>B</p>							
														<p>NUMBER</p> <p>A-000</p>							

RoHS

This products can apply to the SWB Doc NO. QA-3-04-005 of Environmental&Material Management Rules

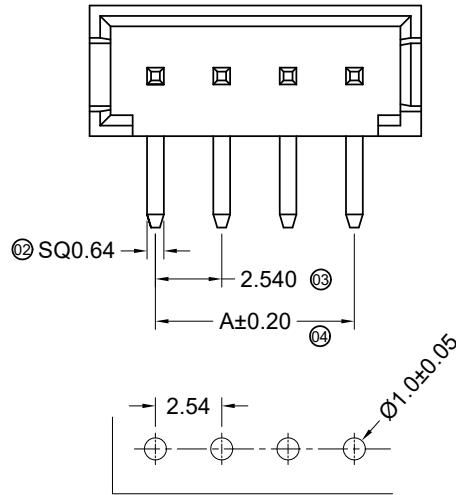
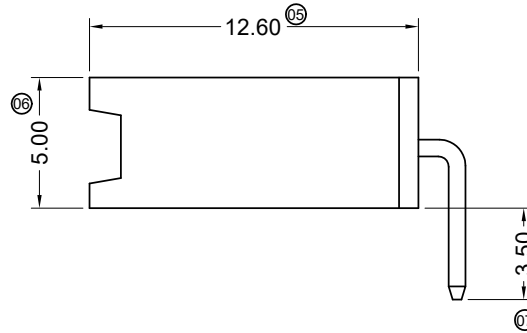


■ Specifications :

- Voltage rating: 250V AC / DC
- Current rating: 3A AC / DC
- Withstanding voltage: 800V AC/minute
- Temperature range: -25°C~+85°C
- Insulation resistance: ≥1000MΩ
- Contact resistance: ≤10mΩ
- After environmental testing: ≤20mΩ
- Material(Pin): Brass
- Mates With SWB Housing: 2530H

2530 W R XX- XX X-PTSN XX
① ②③④ ⑤ ⑥⑦⑧ ⑨

- ① Series No.
- ② Category: W-Wafer
- ③ Connector Type: R-Right Angle 90°
- ④ Mounting Type: Blank-DIP
- ⑤ Row No.-Pin No Per Row: XX-02~22P
- ⑥ Special No.: Blank-Ordinary
- ⑦ Material: PT-PBT 94V-0
- ⑧ Plating Code: SN-Bright Tin
- ⑨ Color: Blank-Black ; RE-Red ; WH-White



Recommended P.C.B Layout
General Tolerance±0.05



Poles	Dimensions(mm)		Poles	Dimensions(mm)	
	A	B		A	B
02	2.54	7.70	12	27.94	33.10
03	5.08	10.20	13	30.48	35.60
04	7.62	12.70	14	33.02	38.10
05	10.16	15.20	15	35.56	40.70
06	12.70	17.80	16	38.10	43.20
07	15.24	20.30	17	40.64	45.70
08	17.78	22.90	18	43.18	48.20
09	20.32	25.40	19	45.72	50.70
10	22.86	28.00	20	48.26	53.20
11	25.40	30.50	22	53.34	58.50

2020/03/17	F	EN20200317001	Update Drawing Frame	Alan qin	Robing	东莞市思索连接器有限公司 SWB CONNECTORS CO.,LTD	PART NO. 2530WR-XX-PTSNNX					
2015/05/11	E		Modify drawing frame format	jian.He	Kim Huang		APPROVAL CHECK DRAWN DATE Robing Jova Lau Liu Yan 2007/05/03	TITLE 2.54mm Crimp Style Connectors				
2013/08/09	D		Modify drawing frame format	Luna	Kim Huang			UNIT	SCALE	SHEET	REV	NUMBER
DATE	REV	ECN NO.	DESCRIPTION	MODIFY	APPROVAL			mm	1:1	1/1	F	A-089