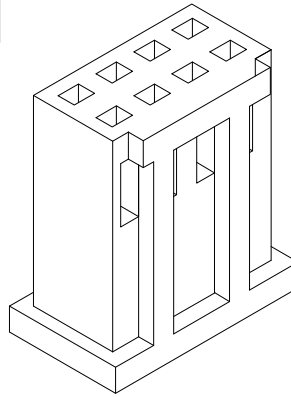
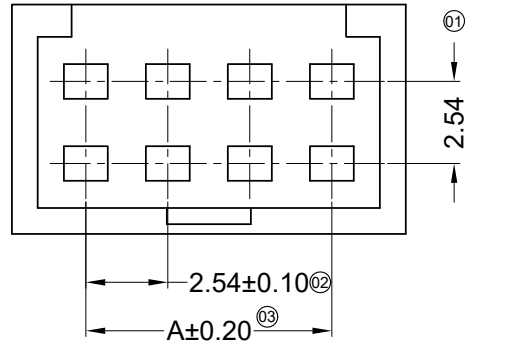


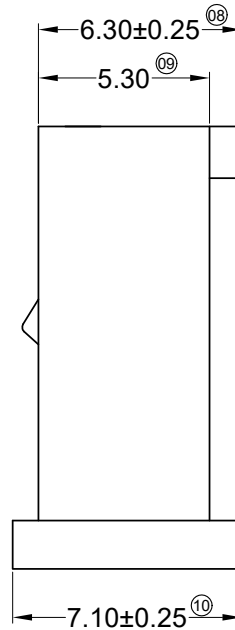
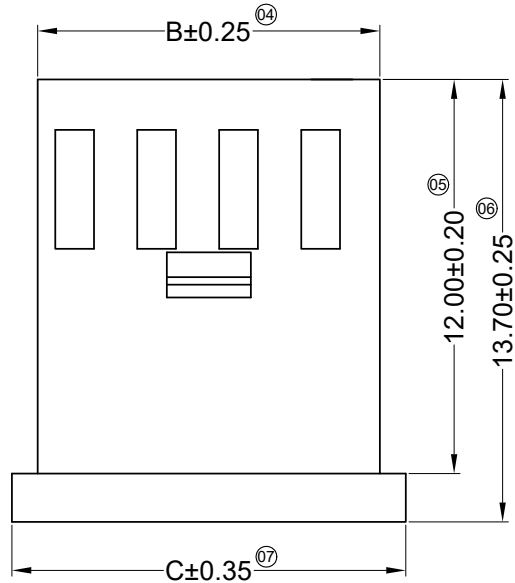
RoHS

This products can apply to the SWB Doc NO. QA-3-04-005 of Environmental&Material Management Rules



■ Specifications :

- Voltage rating: 250V AC / DC
- Current rating: 3A AC / DC
- Withstanding voltage: 800V AC/minute
- Temperature range: -25°C~+85°C
- Insulation resistance: ≥1000MΩ
- Contact resistance: ≤10mΩ
- After environmental testing: ≤20mΩ
- Suitable SWB Terminal: 2530T
- Mates With SWB Wafer: 2530W



2530 H X - 2*XX X-PT XX

① ② ③ ④ ⑤ ⑥ ⑦

- ① Series No.
- ② Category: H-HSG
- ③ Connector Type: Blank-Ordinary
- ④ Row No.-Pin No Per Row: 2*XX-2*02~2*32P
- ⑤ Plug The Pin & Special No.: Blank-Ordinary
- ⑥ Material: PT-PBT 94V-0
- ⑦ Color: Blank- Black

Poles	Dimensions(mm)			Poles	Dimensions(mm)			Poles	Dimensions(mm)		
	A	B	C		A	B	C		A	B	C
2*02	2.54	5.52	7.12	2*13	30.48	33.46	35.06	2*24	58.42	61.40	63.00
2*03	5.08	8.06	9.66	2*14	33.02	36.00	37.60	2*25	60.96	63.94	65.54
2*04	7.62	10.60	12.20	2*15	35.56	38.54	40.14	2*26	63.50	66.48	68.08
2*05	10.16	13.14	14.74	2*16	38.10	41.08	42.68	2*27	66.04	69.02	70.62
2*06	12.70	15.68	17.28	2*17	40.64	43.62	45.22	2*28	68.58	71.56	73.16
2*07	15.24	18.22	19.82	2*18	43.18	46.16	47.76	2*29	71.12	74.10	75.70
2*08	17.78	20.76	22.36	2*19	45.72	48.70	50.30	2*30	73.66	76.64	78.24
2*09	20.32	23.30	24.90	2*20	48.26	51.24	52.84	2*31	76.20	79.18	80.78
2*10	22.86	25.84	27.44	2*21	50.80	53.78	55.38	2*32	78.74	81.72	83.32
2*11	25.40	28.38	29.98	2*22	53.34	56.32	57.92				
2*12	27.94	30.92	32.52	2*23	55.88	58.86	60.46				

2020/03/17	E	EN20200317001	Update Drawing Frame	Alan qin	Robing	GENERAL TOLERANCE .X ±0.30 .XX ±0.20 .XXX ±0.10 X.° ±2° PROJECT 	东莞市思索连接器有限公司 SWB CONNECTORS CO.,LTD				PART NO. 2530H-2*XX-PT				
2015/05/11	D		Modify drawing frame format	jian.He	Jova Lau						APPROVAL CHECK DRAWN DATE				TITLE 2.54 mm Crimp Style Connectors
2013/08/09	C		Modify drawing frame format	Luna	Jova Lau		Robing	Jova Lau	Liu Yan	2007/05/03	UNIT	SCALE	SHEET	REV	NUMBER
DATE	REV	ECN NO.	DESCRIPTION	MODIFY	APPROVAL						mm	1:1	1/1	E	A-053

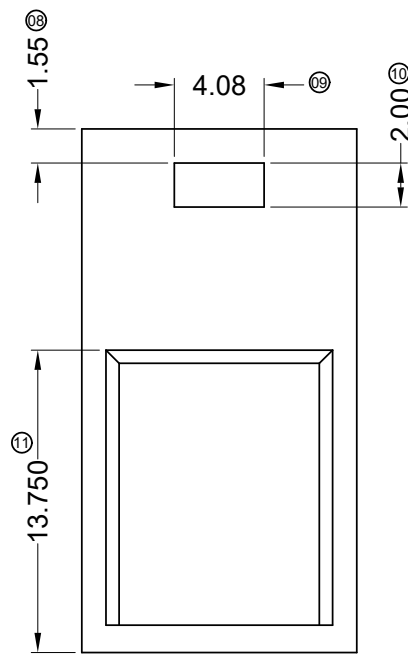
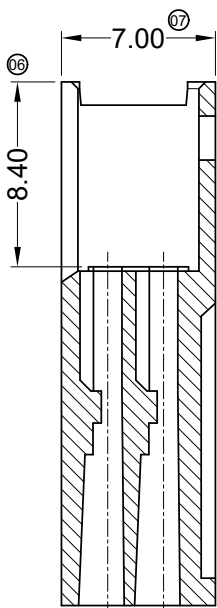
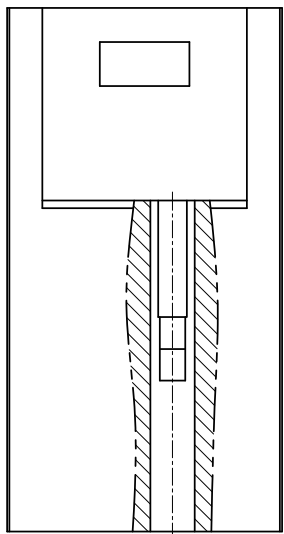
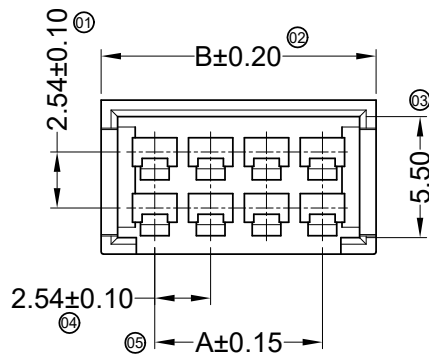
REVISION

This product can apply to SWB SWB Dwg. QWG-04-005-04-005 of Environmental Material Management Rules



■ Specifications :

- Voltage rating: 250V AC / DC
- Current rating: 3A AC / DC
- Withstanding voltage: 800V AC/minute
- Temperature range: -25°C~+85°C
- Insulation resistance: ≥1000MΩ
- Contact resistance: ≤10mΩ
- After environmental testing: ≤20mΩ
- Suitable SWB Terminal: 2530TM
- Mates With SWB Housing: 2530H-2*XX



2530 H F - 2*XX X-PT XX

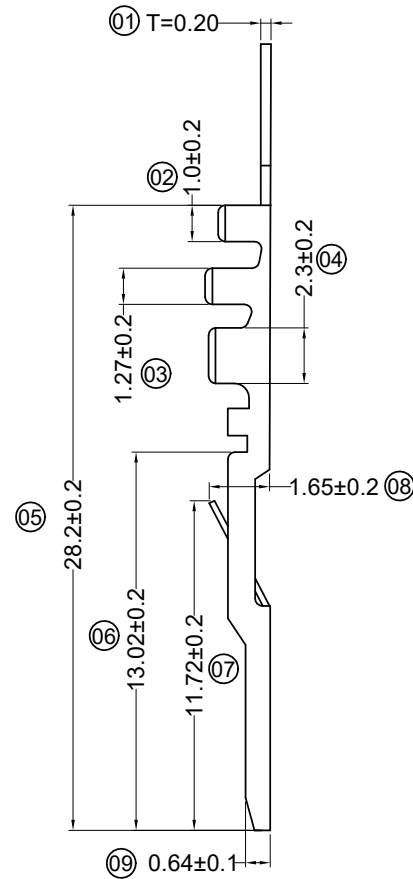
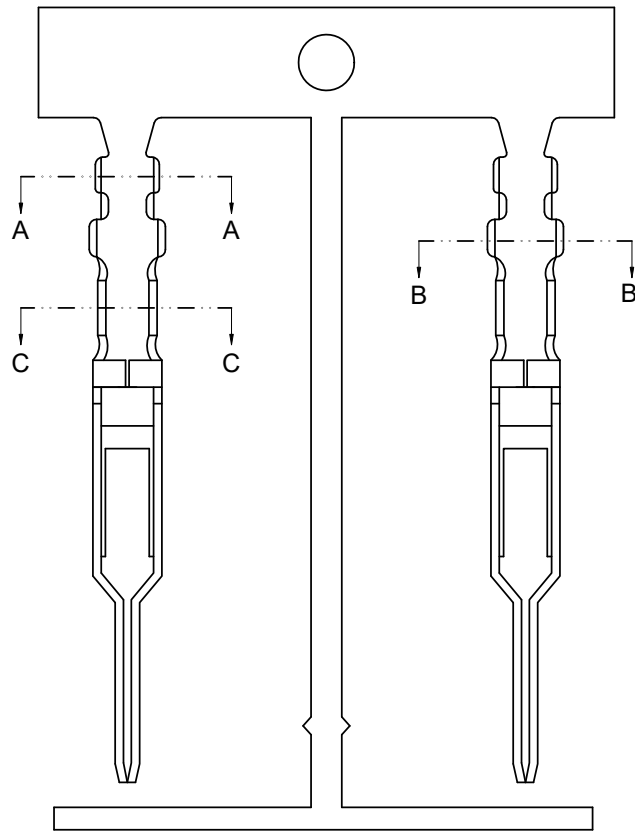
- ① Series No.
 ② Category: H-HSG
 ③ Connector Type: F-Female HSG
 ④ Row No.-Pin No Per Row: 2*XX-2*02P~2*20P
 ⑤ Plug The Pin & Special No.: Blank-Ordinary
 ⑥ Material: PT-PBT 94V-0
 ⑦ Color: Blank-Natural

Poles	Dimensions(mm)		Poles	Dimensions(mm)	
	A	B		A	B
2*02	2.54	7.42	2*12	27.94	32.82
2*03	5.08	9.96	2*13	30.48	35.36
2*04	7.62	12.50	2*14	33.02	37.90
2*05	10.16	15.04	2*15	35.56	40.44
2*06	12.70	17.58	2*16	38.10	42.98
2*07	15.24	20.12	2*17	40.64	45.52
2*08	17.78	22.66	2*18	43.18	48.06
2*09	20.32	25.20	2*19	45.72	50.06
2*10	22.86	27.74	2*20	48.26	53.14
2*11	25.40	30.28			

						<p>GENERAL TOLERANCE</p> <p>.X ±0.30</p> <p>.XX ±0.20</p> <p>.XXX ±0.10</p> <p>X.° ±2°</p>				<p>东莞市思索连接器有限公司</p> <p>SWB CONNECTORS CO.,LTD</p>				<p>PART NO.</p> <p>2530HF-2*XX-PT</p>																					
						<p>APPROVAL</p> <p>Robing</p>				<p>CHECK</p> <p>Jova Lau</p>				<p>DRAWN</p> <p>sylvia</p>				<p>DATE</p> <p>2016/04/25</p>																	
<p>2020/03/17</p>						<p>B</p>						<p>EN20200317001</p>						<p>Update Drawing Frame</p>						<p>Alan qin</p>						<p>Robing</p>					
DATE		REV		ECN NO.		DESCRIPTION						MODIFY		APPROVAL				PROJECT		UNIT		SCALE		SHEET		REV		NUMBER							
														<p>Robing</p>				<p>⊕</p>		<p>mm</p>		<p>1 : 1</p>		<p>1/1</p>		<p>B</p>		<p>A-106</p>							

RoHS

This products can apply to the SWB Doc NO. QA-3-04-005 of Environmental&Material Management Rules



■ Specifications :

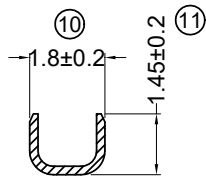
- Voltage rating: 250V AC / DC
- Current rating: 3A AC / DC
- Withstanding voltage: 800V AC/minute
- Temperature range: -25°C~+85°C
- Insulation resistance: ≥1000MΩ
- Contact resistance: ≤10mΩ
- After environmental testing: ≤20mΩ

- Wire Size: AWG #22~26
- Insulation O.D.: 1.55mm (Max)
- Used In SWB Housing: 2530H

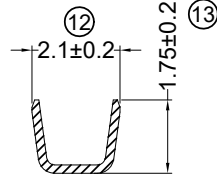
2530 T M-X SN X-X

① ② ③ ④ ⑤ ⑥ ⑦

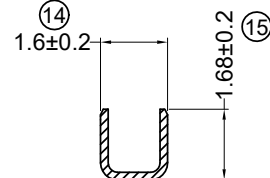
- ① Series Number
- ② Category: T-Terminal
- ③ Shape: M-Male
- ④ Material: P-Phosphor Bronze B-Brass
- ⑤ Plating Code: SN-Ni 30u" Min Bright tin 70u" Min
- ⑥ Plating Method: B-Plating Before Stamping
- ⑦ Mold No./Mark/Special No. : Blank-Ordinary



SECTION A-A
SCALE 1 : 1



SECTION B-B
SCALE 1 : 1



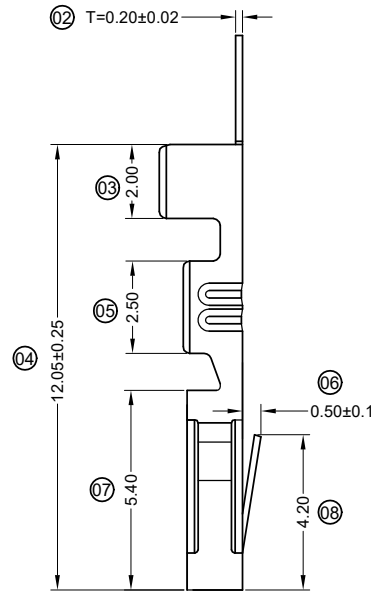
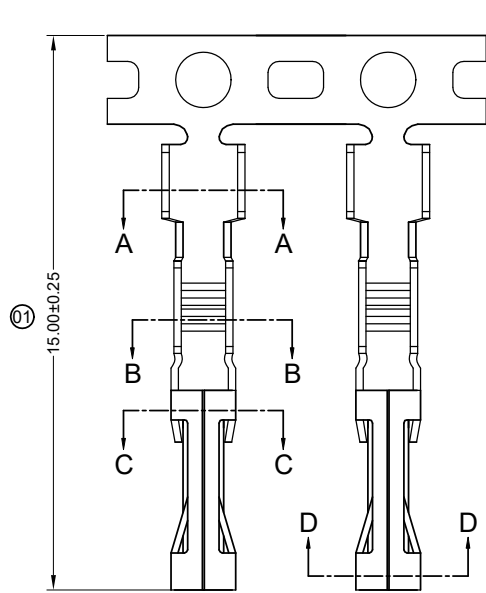
SECTION C-C
SCALE 1 : 1



					<p>GENERAL TOLERANCE</p> <p>.X ±0.30</p> <p>.XX ±0.20</p> <p>.XXX ±0.10</p> <p>X.° ±2°</p>				<p>东莞市思索连接器有限公司</p> <p>SWB CONNECTORS CO.,LTD</p>				<p>PART NO.</p> <p>2530TM-XSN</p>				
<p>2020/03/17 E EN20200317001 Update Drawing Frame Alan qin Robing</p>					<p>APPROVAL CHECK DRAWN DATE</p>				<p>TITLE</p> <p>2.54 mm Crimp Style Connectors</p>								
<p>2015/05/11 D Modify drawing frame format jian.He Success</p>					<p>Robing Sun Kaibao Liu Yan 2007/05/03</p>				<p>UNIT SCALE SHEET REV NUMBER</p> <p>mm 1 : 1 1/1 E A-093</p>								
DATE	REV	ECN NO.	DESCRIPTION	MODIFY	APPROVAL	PROJECT											

RoHS

This products can apply to the SWB Doc NO. QA-3-04-005 of Environmental&Material Management Rules



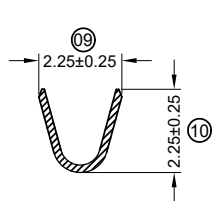
■ Specifications :

- Voltage rating: 250V AC / DC
- Current rating: 3A AC / DC
- Withstanding voltage: 800V AC/minute
- Temperature range: -25°C~+85°C
- Insulation resistance: ≥1000MΩ
- Contact resistance: ≤10mΩ
- After environmental testing: ≤20mΩ
- Wire Size: AWG #22~26
- Insulation O.D.: 1.55mm (Max)
- Used In SWB Housing: 2530H

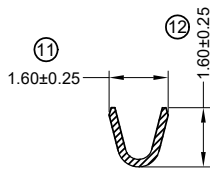
2530 T F-P SN X-A
① ② ③ ④ ⑤ ⑥ ⑦



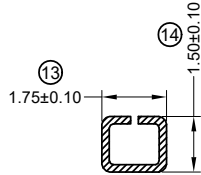
- ① Series Number
- ② Category: T-Terminal
- ③ Shape: F-Fmale
- ④ Material: P-Phosphor Bronze
- ⑤ Plating Code: SN-Ni 30u" Min Bright tin 70u" Min
- ⑥ Plating Method: B-Plating Before Stamping
- ⑦ Mold No./Mark/Special No. : A-Single Strip



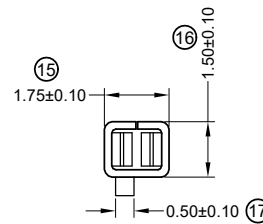
SECTION A-A
SCALE 1 : 1



SECTION B-B
SCALE 1 : 1



SECTION C-C
SCALE 1 : 1



SECTION D-D
SCALE 1 : 1

2020/05/12	F	EN20200512003	Update the drawing according to the material object	Alan qin	Robing	GENERAL TOLERANCE .X ±0.30 .XX ±0.20 .XXX ±0.10 X.° ±2° PROJECT 	东莞市思索连接器有限公司 SWB CONNECTORS CO.,LTD				PART NO. 2530TF-PSN-A				
2020/03/17	E	EN20200317001	Update Drawing Frame	Alan qin	Robing						TITLE 2.54 mm Crimp Style Connectors				
2015/05/11	D		Modify drawing frame format	jian.He	Jova Lau		APPROVAL	CHECK	DRAWN	DATE					
DATE	REV	ECN NO.	DESCRIPTION	MODIFY	APPROVAL		Robing	Alan qin	Liu qiu xiang	2007/05/03	UNIT	SCALE	SHEET	REV	NUMBER
										mm	1:1	1/1	F	A-053	

