

RoHS

This products can apply to the SESO Doc NO. QA-3-04-005 of Environmental&Material Management Rules

Specifications :

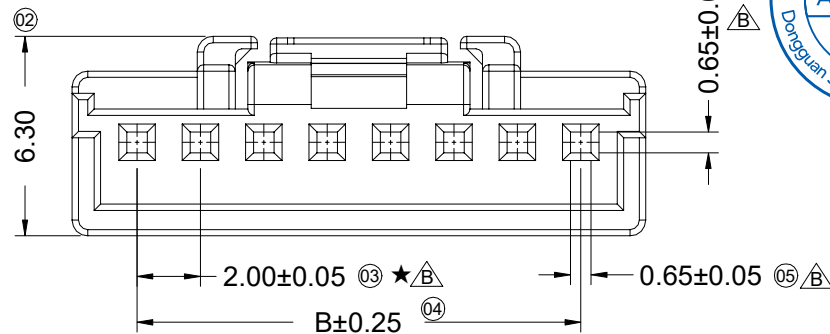
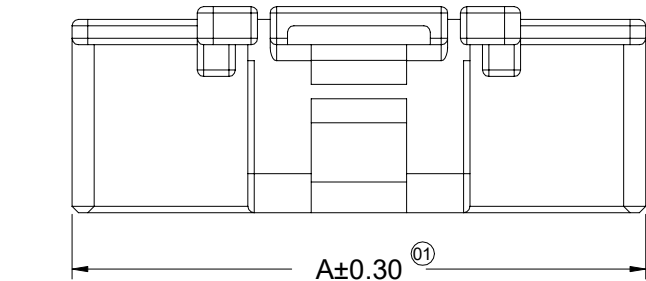
- Voltage rating: 125V AC / DC
- Current rating: 3A AC / DC
- Withstanding voltage: 500V AC/minute
- Temperature range: -40°C~+105°C
- Insulation resistance: ≥1000MΩ
- Contact resistance: ≤10mΩ
- After environmental testing: ≤20mΩ
- Suitable SESO Terminal: 2008T / 2008TH
- Suitable SESO Wafer: 2008WRS / 2008WVS
- "★"Critical dimension

2008 H X-XX X-XX XX XX

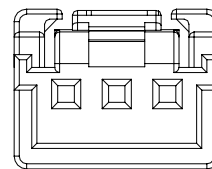
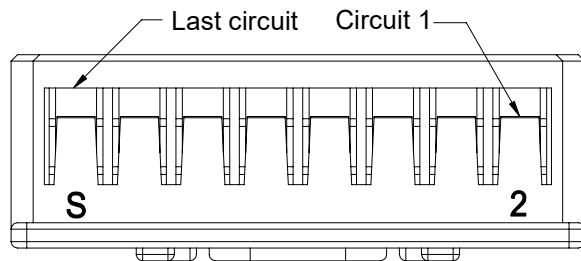
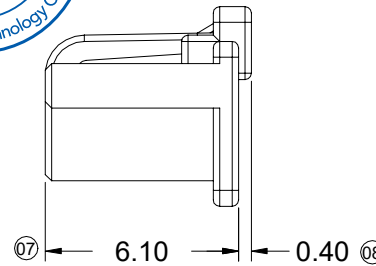
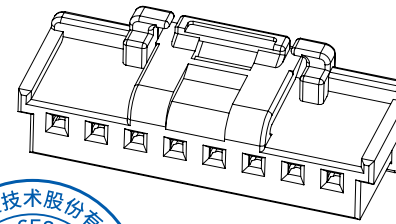
① ②③④⑤⑥⑦⑧

- ① Series No.
- ② Category: H-HSG
- ③ Connector Type: Blank-Ordinary
- ④ Row No.-Pin No Per Row: XX-02~15PIN
- ⑤ Special No.: Blank-Ordinary
- ⑥ Material: PT-PBT UL94V-0  
N0-PA66 UL94V-0
- ⑦ HF-Halogen Free Blank-Non halogen free
- ⑧ Color: Blank-Natural Color

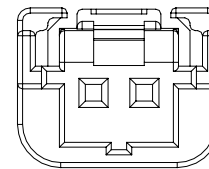
Poles	Dimensions (mm)		Poles	Dimensions (mm)	
	A	B		A	B
02	8.00	2.00	09	20.10	16.00
03	8.10	4.00	10	22.10	18.00
04	10.10	6.00	11	24.10	20.00
05	12.10	8.00	12	26.10	22.00
06	14.10	10.00	13	28.10	24.00
07	16.10	12.00	14	30.10	26.00
08	18.10	14.00	15	32.10	28.00



05P~15P Shape  
Scale 1:1



03P~04P Shape  
Scale 0.8:1



02P Shape  
Scale 0.8:1

DATE	REV	ECN NO.	DESCRIPTION	MODIFY	APPROVAL
2023/8/23	E	/	Update Drawing Frame	Zhou	Larry Yang
2021/12/16	D	EN20211216001	Modify the first pin label	Xue	Robing
2020/3/16	C	EN20200316002	Update Drawing Frame	Alan qin	Robing

GENERAL TOLERANCE	
.X	±0.30
.XX	±0.20
.XXX	±0.10
X.°	±2°

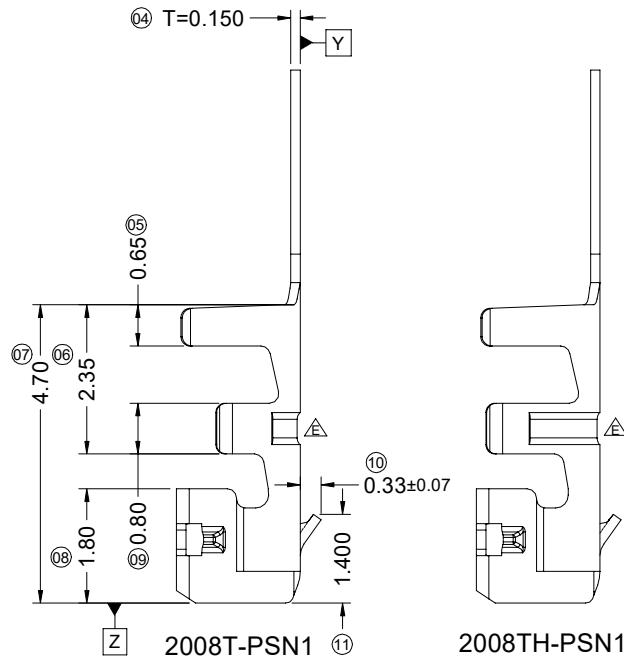
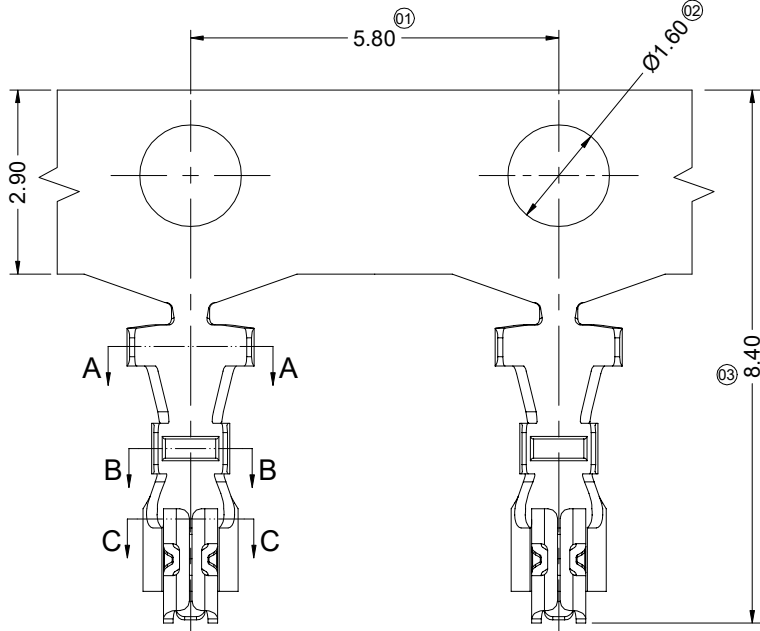
**SMS** 东莞市思索技术股份有限公司  
Dongguan SESO Technology Co.,Ltd.

PROJECT	APPROVAL	CHECK	DRAWN	DATE
Robing	Jacky	Yu wei	2017/09/05	

PART NO.				
2008H-XX-XX XX				
TITLE				
2.00 mm Crimp Style Connectors				
UNIT	SCALE	SHEET	REV	NUMBER
mm	1:1	1/1	E	A-022

RoHS

This products can apply to the SESO Doc NO. QA-3-04-005 of Environmental&Material Management Rules



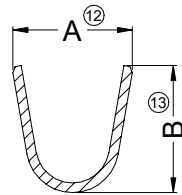
■ Specifications :

- Voltage rating: 125V AC / DC
- Current rating: 3A AC / DC
- Withstanding voltage: 500V AC/minute
- Temperature range: -40°C~+105°C
- Insulation resistance: ≥1000MΩ
- Contact resistance: ≤10mΩ
- After environmental testing: ≤20mΩ
- Used In SESO Housing: 2008H
- "★"Critical dimension

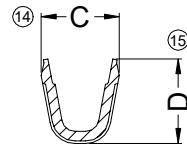
2008 T X-P SN1 X-X

① ② ③ ④ ⑤ ⑥ ⑦

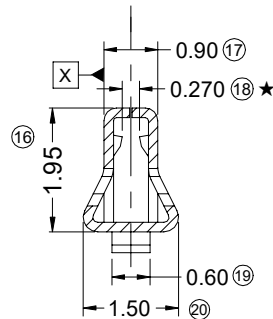
- ① Series Number
- ② Category: T-Terminal
- ③ Shape: Blank-Ordinary ; H-High Crimp
- ④ Material: P-Phosphor Bronze
- ⑤ Plating Code: SN1-Bright Tin
- ⑥ Plating method: Blank-Stamping Before Plating
- ⑦ Mold No./Mark/Special No.: Blank-Ordinary



SECTION: A-A  
SCALE: 1:1



SECTION: B-B  
SCALE: 1:1



SECTION: C-C  
SCALE: 1:1



2008T-PSN1	1.88	2.00	1.23	1.33	AWG#24~26 (0.22~0.13mm <sup>2</sup> )	1.40mm(Max)
2008TH-PSN1	1.88	2.00	1.85	1.80	AWG#20~22 (0.5~0.35mm <sup>2</sup> )	1.50mm(Max)
PART NO	Dim A	Dim B	Dim C	Dim D	Wire Size	Insulation O.D.

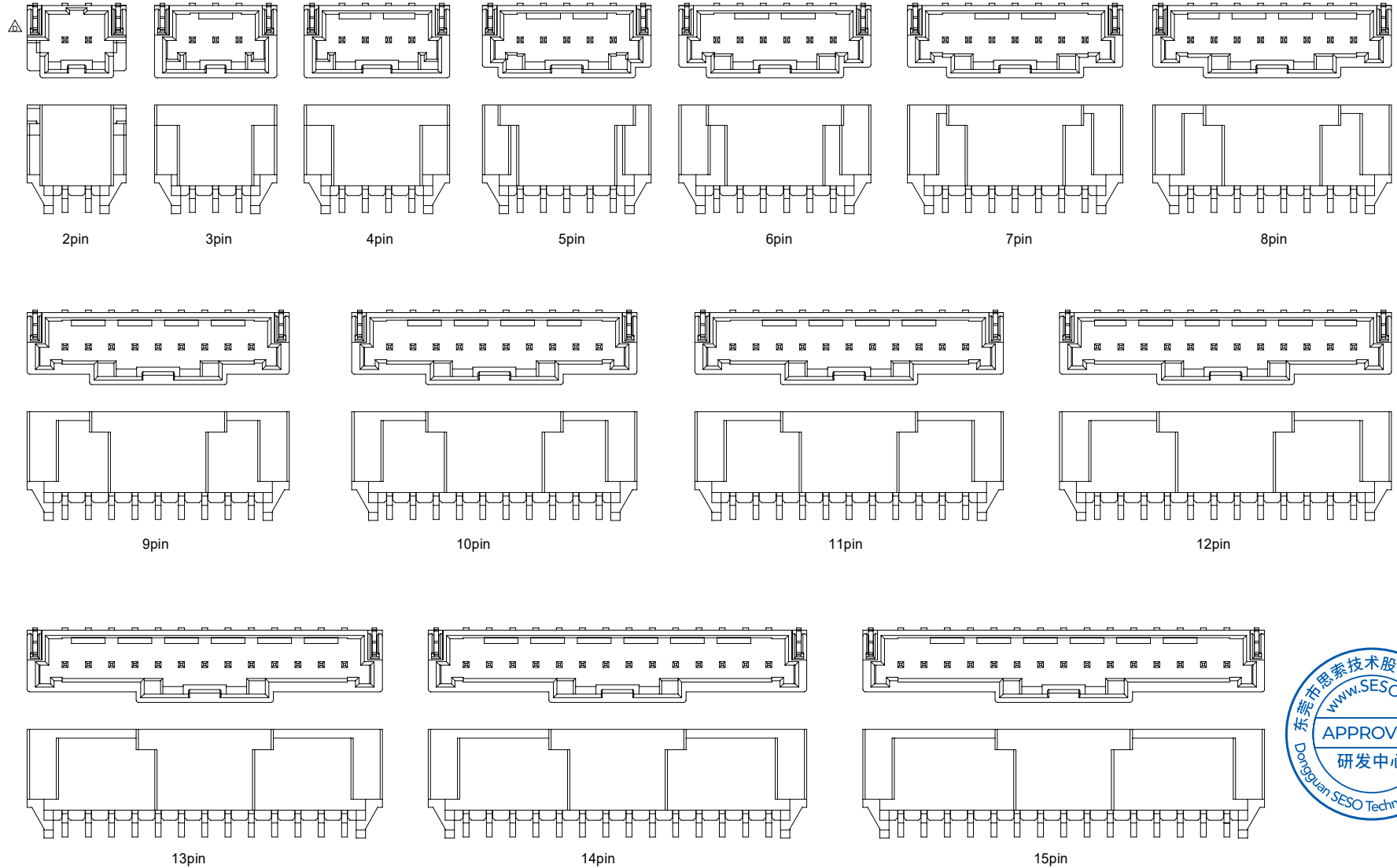
2023/08/23	F	/	Update Drawing Frame	Zhou	Larry Yang	<b>GENERAL TOLERANCE</b> X ±0.30 JX ±0.20 XXX±0.10 X° ±2° PROJECT		<b>APPROVAL</b> Smark	<b>CHECK</b> Tang	<b>DRAWN</b> Alan qin	<b>DATE</b> 2017/08/09	<b>PART NO.</b> 2008TX-PSN1				
2021/08/05	E	EN20210805001	Change The Drawing By Product	HT	Alan_Qin							<b>TITLE</b> 2.00mm Crimp Style Connectors				
2021/01/22	D	ER20210126002	Added control over the size of the hook	Xue	Robing							<b>UNIT</b> mm				
<b>DATE</b>	<b>REV</b>	<b>ECN NO.</b>	<b>DESCRIPTION</b>	<b>MODIFY</b>	<b>APPROVAL</b>							<b>SCALE</b> 1:1				
						<b>SHEET</b> 1/1										
						<b>REV</b> F										
						<b>NUMBER</b> A-000										

**SMS** 东莞市思索技术股份有限公司  
Dongguan SESO Technology Co.,Ltd.



RoHS

This products can apply to the SESO Doc NO. QA-3-04-005 of Environmental&Material Management Rules

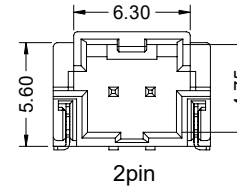
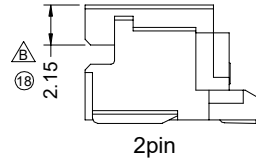
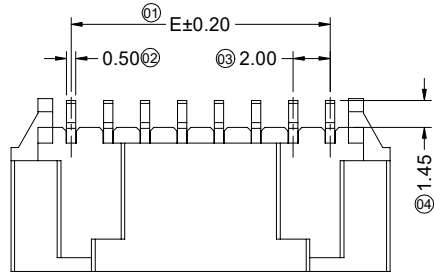


						<b>GENERAL TOLERANCE</b> .X ±0.30 .XX ±0.20 .XXX±0.10 X.' ±2' PROJECT 				<b>SMS 东莞市思索技术股份有限公司</b> Dongguan SESO Technology Co.,Ltd.				PART NO. 2008WRS-1xXX-XXXB05RRXXXQ				
2022/10/06	E1	EN20211216001 Modify the first pin label		Xue	Larry	APPROVAL    CHECK    DRAWN    DATE				TITLE Pitch 2.00 mm 90° SMT Wafer Connectors								
2021/12/16	E			Xue	Larry	Robing	Joshua	Alan qin	2018/10/16	UNIT	SCALE	SHEET	REV	NUMBER				
DATE	REV	ECN NO.	DESCRIPTION	MODIFY	APPROVAL					mm	1:1	2/2	E1	A-000				

RoHS

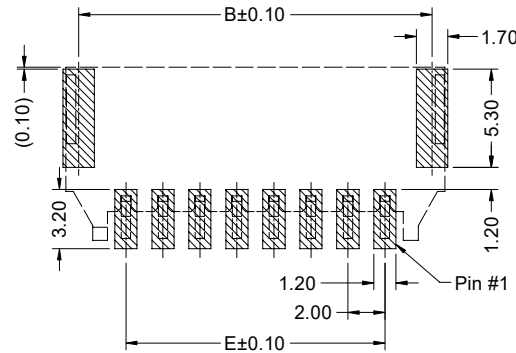
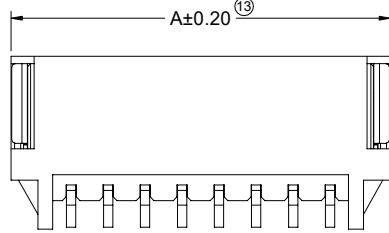
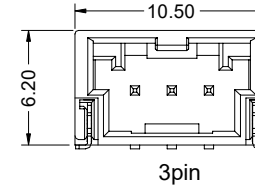
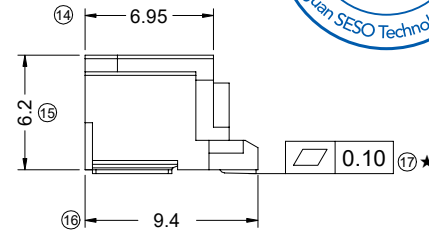
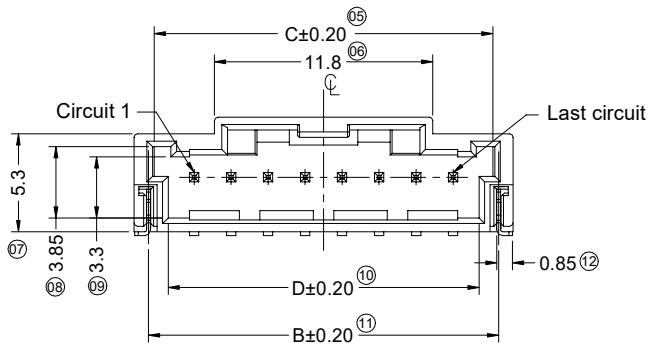
This products can apply to the SESO Doc NO. QA-3-04-005 of Environmental&Material Management Rules

- Specifications :
- Voltage rating: 125V AC / DC
  - Current rating: 3A AC / DC
  - Withstanding voltage: 500V AC/minute
  - Temperature range: -40°C~+105°C
  - Insulation resistance: ≥1000MΩ
  - Contact resistance: ≤10mΩ
  - After environmental testing: ≤20mΩ
  - Material(Pin): Brass
  - Mates With SESO Housing: 2008H
  - "★" Critical dimension

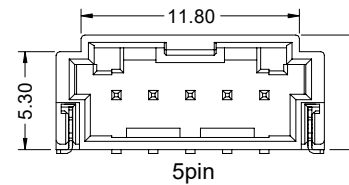
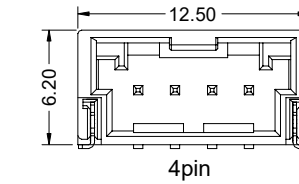


2008 W R S - XX - XX XXX X XX  
① ② ③ ④ ⑤ ⑥ ⑦ ⑧ ⑨

- ① Series No.
- ② Category: W-wafer
- ③ Connector Type: R-Right Angle 90°
- ④ Mounting Type: S-SMT
- ⑤ Row No.-Pin No Per Row: XX-Single Row XXPin
- ⑥ Plastic material: 9T- PA9T UL94V-0; LP- LCP UL94V-0
- ⑦ Plating Code: SW1-Matte Tin GW01-Contact Gold Flash
- ⑧ Color: N-Natural; B-Black; R-Red; L-Blue
- ⑨ Packing: R- Reel (Heatsealing) R1- Reel (Coldsealing)



RECOMMENDED P.C.B LAYOUT  
(TOLERANCE:±0.05)



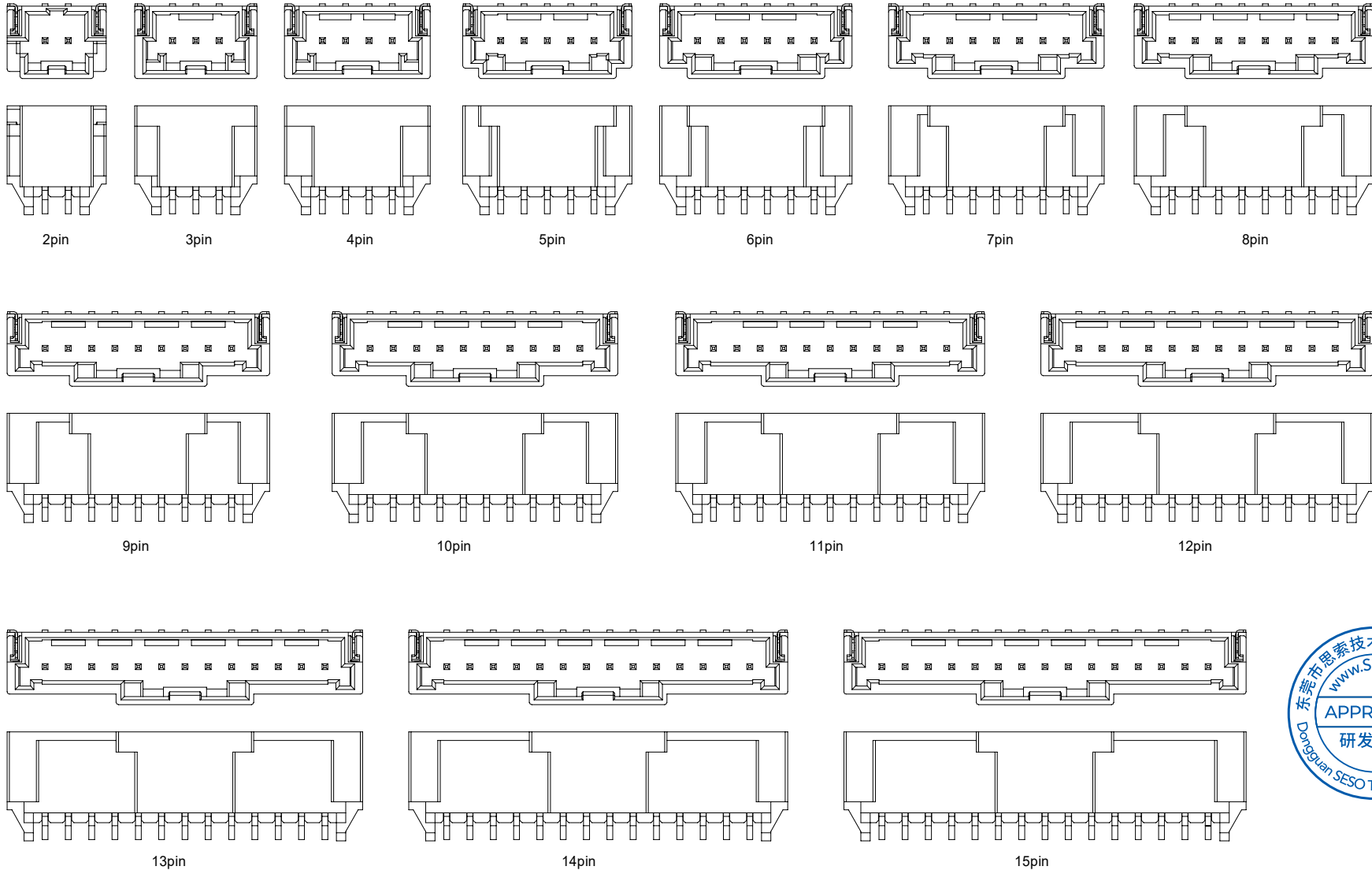
Poles	Dimensions (mm)				
	A	B	C	D	E
02	8.50	6.93	6.30	4.80	2.00
03	10.50	8.93	8.30	6.80	4.00
04	12.50	10.93	10.30	8.80	6.00
05	14.50	12.93	12.30	10.80	8.00
06	16.50	14.93	14.30	12.80	10.00
07	18.50	16.93	16.30	14.80	12.00
08	20.50	18.93	18.30	16.80	14.00
09	22.50	20.93	20.30	18.80	16.00
10	24.50	22.93	22.30	20.80	18.00
11	26.50	24.93	24.30	22.80	20.00
12	28.50	26.93	26.30	24.80	22.00
13	30.50	28.93	28.30	26.80	24.00
14	32.50	30.93	30.30	28.80	26.00
15	34.50	32.93	32.30	30.80	28.00

DATE	REV	ECN NO.	DESCRIPTION	MODIFY	APPROVAL
1		2		4	

GENERAL TOLERANCE				东莞市思索技术股份有限公司 Dongguan SESO Technology Co.,Ltd.				PART NO.				
.X	±0.30	.XX	±0.20					2008WRS-XX-XXXXXXXX				
.XXX	±0.10	X.°	±2°	APPROVAL	CHECK	DRAWN	DATE	TITLE				
PROJECT				Larry Yang	Larry Yang	Xue	2022.10.14	Pitch 2.00 mm 90° SMT Wafer Connectors				
				UNIT	SCALE	SHEET	REV	NUMBER				
				mm	1:1	1/2	A0	A-000				

RoHS

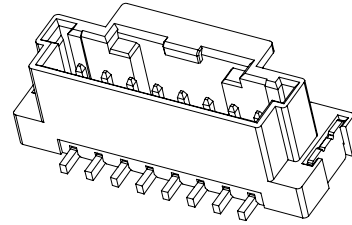
This products can apply to the SESO Doc NO. QA-3-04-005 of Environmental&Material Management Rules



					GENERAL TOLERANCE .X ±0.30 .XX ±0.20 .XXX ±0.10 X.° ±2°				<b>SMS 东莞市思索技术股份有限公司</b> Dongguan SESO Technology Co.,Ltd.				PART NO. 2008WRS-XX-XXXXXXX												
					APPROVAL Larry Yang				CHECK Larry Yang				DRAWN Xue				DATE 2022.10.14				TITLE Pitch 2.00 mm 90° SMT Wafer Connectors				
DATE	REV	ECN NO.	DESCRIPTION	MODIFY	APPROVAL	PROJECT								UNIT	SCALE	SHEET	REV	NUMBER							
														mm	1:1	2/2	A0	A-000							

RoHS

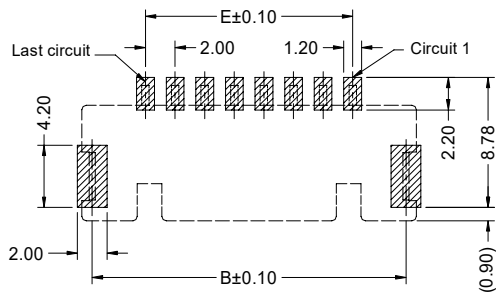
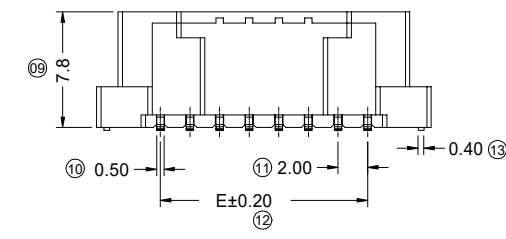
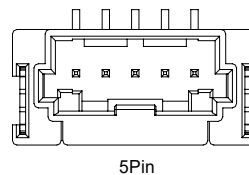
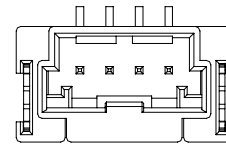
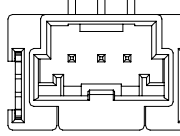
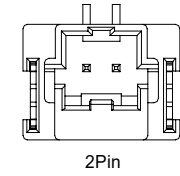
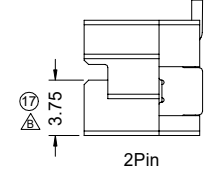
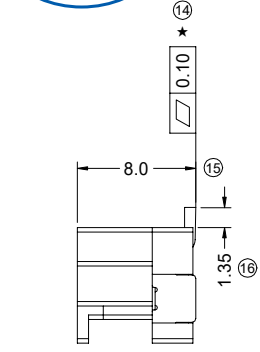
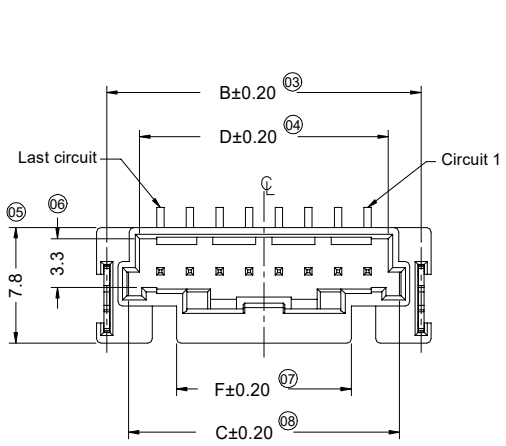
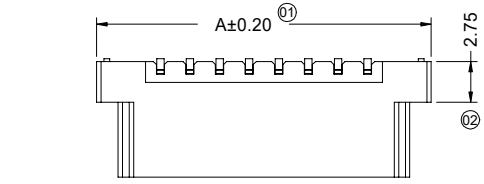
This products can apply to the SESO Doc NO. QA-3-04-005 of Environmental&Material Management Rules



- Specifications :
- Voltage rating: 125V AC / DC
  - Current rating: 3A AC / DC
  - Withstanding voltage: 500V AC/minute
  - Temperature range: -40°C~+125°C
  - Insulation resistance: ≥1000MΩ
  - Contact resistance: ≤10mΩ
  - After environmental testing: ≤20mΩ
  - Material(Pin): Brass
  - Mates With SESO Housing: 2008H
  - "★" Critical dimension

2008 W V S - 1 x XX - XX X B XX X R XXX Q  
 ① ② ③ ④ ⑤ ⑥ ⑦ ⑧ ⑨ ⑩ ⑪ ⑫ ⑬

- ① Series No.
- ② Category: W-wafer
- ③ Connector Type: V-Straight 180°
- ④ Mounting Type: S-SMT
- ⑤ Row No.-Pin No: 1xXX-Single Row 1xXXPin
- ⑥ Plastic material: 9T- PA9T 94V-0; LP- LCP 94V-0
- ⑦ Color: N-Natural; B-Black; R-Red; L-Blue
- ⑧ Metal material: B-Brass
- ⑨ Plating Code: 05-Matte Tin  
30-Contact Area: Gold flash  
Solder Area: Matte Tin
- ⑩ Packing: R-Reel, Without Mylar
- ⑪ RoHS/HF: R-RoHS H-Halogen-Free
- ⑫ Sequence Number: 002-Coldsealing ; 02C-Heatsealing
- ⑬ Special code :Q-Automotive Connectors



RECOMMENDED P.C.B LAYOUT (TOLERANCE:±0.05)

Poles	Dimensions (mm)					
	A	B	C	D	E	F
02	10.60	9.23	6.30	4.80	2.00	6.30
03	12.60	11.23	8.30	6.80	4.00	5.80
04	14.60	13.23	10.30	8.80	6.00	7.80
05	16.60	15.23	12.30	10.80	8.00	9.80
06	18.60	17.23	14.30	12.80	10.00	11.80
07	20.60	19.23	16.30	14.80	12.00	11.80
08	22.60	21.23	18.30	16.80	14.00	11.80
09	24.60	23.23	20.30	18.80	16.00	11.80
10	26.60	25.23	22.30	20.80	18.00	11.80
11	28.60	27.23	24.30	22.80	20.00	11.80
12	30.60	29.23	26.30	24.80	22.00	11.80
13	32.60	31.23	28.30	26.80	24.00	11.80
14	34.60	33.23	30.30	28.80	26.00	11.80
15	36.60	35.23	32.30	30.80	28.00	11.80

DATE	REV	ECN NO.	DESCRIPTION	MODIFY	APPROVAL	PROJECT				PART NO.					
2021/12/16	D	EN20211216001	Modify the first pin label	Xue	Robing	GENERAL TOLERANCE					2008WVS-1xXX-XXXBXXRRXXXQ				
2020/03/16	C	ER20190805001	Update Drawing Frame, The Same ECR And ECN No	Alan qin	Robing	.X ±0.30					TITLE				
						.XX ±0.20					Pitch 2.00 mm 180° SMT Wafer Connectors				
						.XXX±0.10					UNIT				
						X.' ±2'					SCALE				
						PROJECT					SHEET				
						APPROVAL					REV				
						Robing					NUMBER				
						CHECK					mm				
						DRAWN					1:1				
						DATE					1/2				
						2019/01/16					D				
						A-000									

**SMS** 东莞市思索技术股份有限公司  
Dongguan SESO Technology Co.,Ltd.

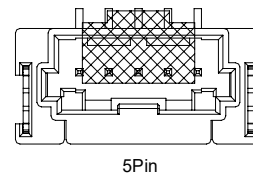
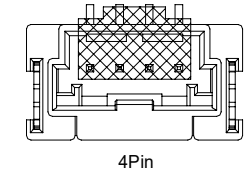
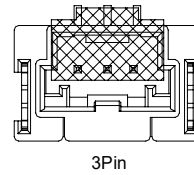
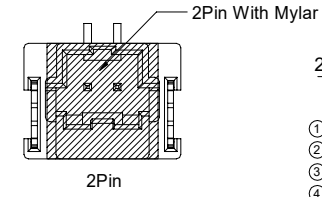
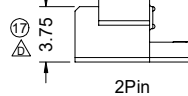
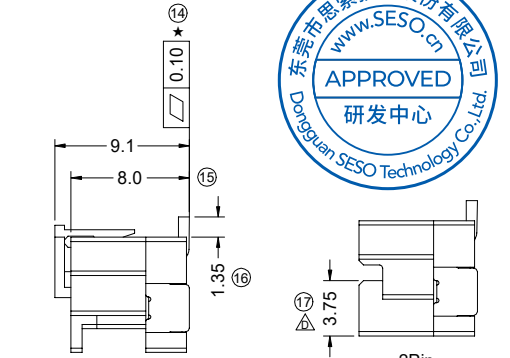
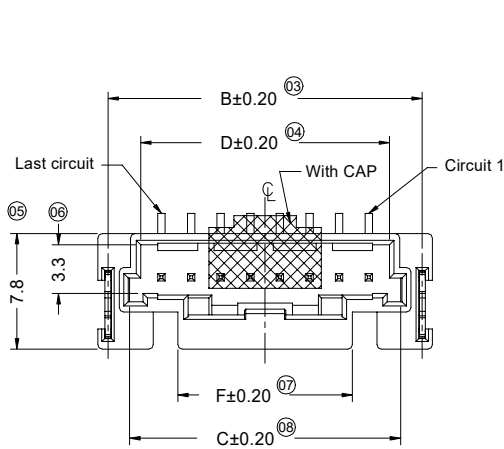
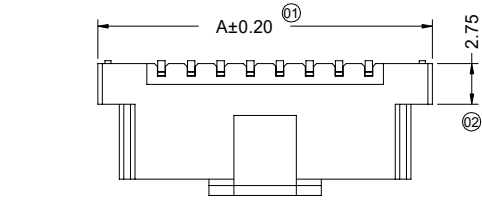
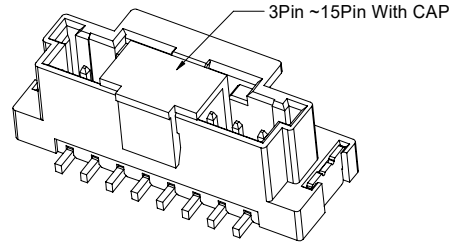




RoHS

This products can apply to the SESO Doc NO. QA-3-04-005 of Environmental&Material Management Rules

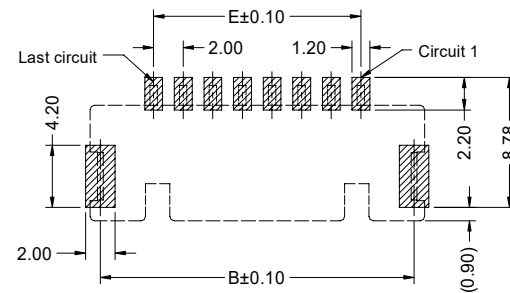
- Specifications :
- Voltage rating: 125V AC / DC
  - Current rating: 3A AC / DC
  - Withstanding voltage: 500V AC/minute
  - Temperature range: -40°C~+125°C
  - Insulation resistance: ≥1000MΩ
  - Contact resistance: ≤10mΩ
  - After environmental testing: ≤20mΩ
  - Material(Pin): Brass
  - Mates With SESO Housing: 2008H
  - "\*" Critical dimension



2008 W V S - 1 x XX - XX X B 05 X R XXX Q  
 ① ② ③ ④ ⑤ ⑥ ⑦ ⑧ ⑨ ⑩ ⑪ ⑫ ⑬

- ① Series No.
- ② Category: W-wafer
- ③ Connector Type: V-Straight 180°
- ④ Mounting Type: S-SMT
- ⑤ Row No.-Pin No Per Row: 1xXX-Single Row 1xXXPin
- ⑥ Plastic material: 9T- PA9T 94V-0; LP- LCP 94V-0
- ⑦ Color: N-Natural; B-Black; R-Red; L-Blue
- ⑧ Metal material: B-Brass
- ⑨ Plating Code: 05-Matte Tin
- ⑩ Packing: W-Reel ,With Mylar  
C-Reel , With CAP
- ⑪ RoHS/HF: R-RoHS H-Halogen-Free
- ⑫ Sequence Number: 002-Coldsealing ; 02C-Heatsealing
- ⑬ Special code :Q-Automotive Connectors

Poles	Dimensions (mm)					
	A	B	C	D	E	F
02	10.60	9.23	6.30	4.80	2.00	6.30
03	12.60	11.23	8.30	6.80	4.00	5.80
04	14.60	13.23	10.30	8.80	6.00	7.80
05	16.60	15.23	12.30	10.80	8.00	9.80
06	18.60	17.23	14.30	12.80	10.00	11.80
07	20.60	19.23	16.30	14.80	12.00	11.80
08	22.60	21.23	18.30	16.80	14.00	11.80
09	24.60	23.23	20.30	18.80	16.00	11.80
10	26.60	25.23	22.30	20.80	18.00	11.80
11	28.60	27.23	24.30	22.80	20.00	11.80
12	30.60	29.23	26.30	24.80	22.00	11.80
13	32.60	31.23	28.30	26.80	24.00	11.80
14	34.60	33.23	30.30	28.80	26.00	11.80
15	36.60	35.23	32.30	30.80	28.00	11.80



RECOMMENDED P.C.B LAYOUT (TOLERANCE:±0.05)

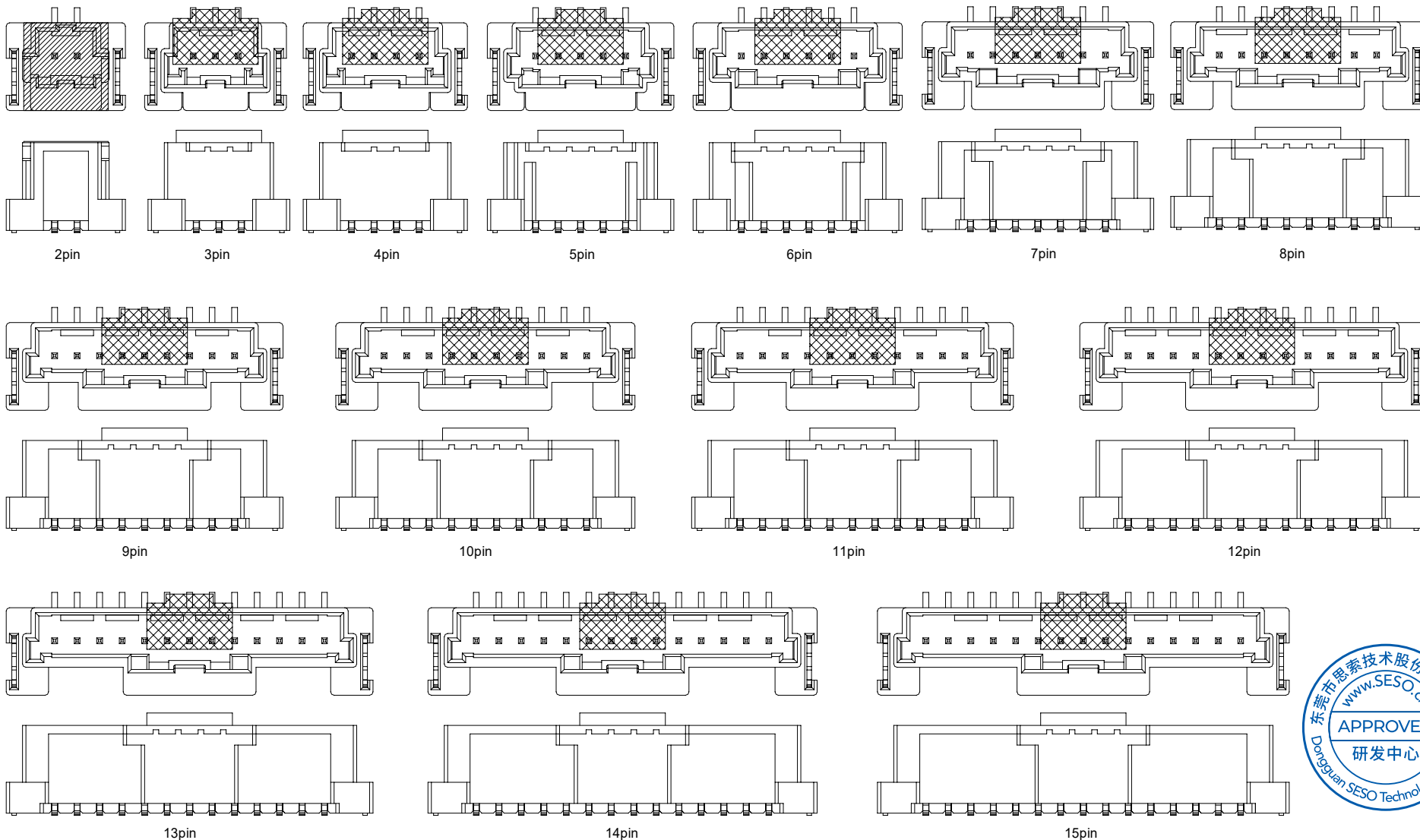
DATE	REV	ECN NO.	DESCRIPTION	MODIFY	APPROVAL	PROJECT	APPROVAL	CHECK	DRAWN	DATE	UNIT	SCALE	SHEET	REV	NUMBER	
2021/12/16	F	EN20211216001	Modify the first pin label	Xue	Robing	GENERAL TOLERANCE	<b>东莞市思索技术股份有限公司</b> Dongguan SESO Technology Co.,Ltd.	APPROVAL	CHECK	DRAWN	DATE	mm	1:1	1/2	F	A-000
2020/03/16	E	ER20190805001	Update Drawing Frame, The Same ECR And ECN No	Alan qin	Robing	.X ±0.30										
						.XX ±0.20										
						.XXX±0.10										
						X.' ±2'										
						PROJECT										
							Robing	Joshua	Alan qin	2019/01/16						

PART NO. 2008WVS-1xXX-XXXBXXRRXXXQ

TITLE Pitch 2.00 mm 180° SMT Wafer Connectors

RoHS

This products can apply to the SESO Doc NO. QA-3-04-005 of Environmental&Material Management Rules

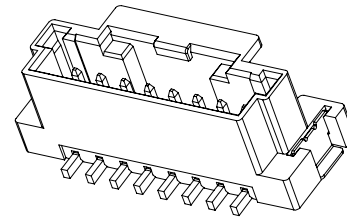


					GENERAL TOLERANCE				PART NO.				
					.X ±0.30				2008WVS-1xXX-XXXBXXRRXXQ				
					.XX ±0.20				TITLE				
					.XXX±0.10				Pitch 2.00 mm 180° SMT Wafer Connectors				
					X.' ±2'				UNIT SCALE SHEET REV NUMBER				
					PROJECT				mm 1:1 2/2 F A-000				
					APPROVAL				APPROVAL CHECK DRAWN DATE				
					Robing				Robing Joshua Alan qin 2019/01/16				
					DATE								
					REV								
					ECN NO.								
					DESCRIPTION								
					MODIFY								
					APPROVAL								

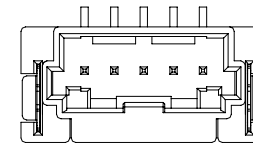
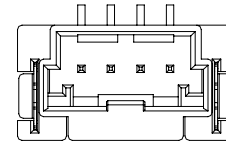
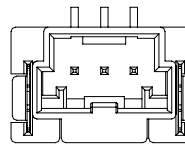
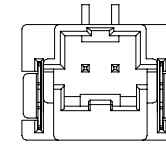
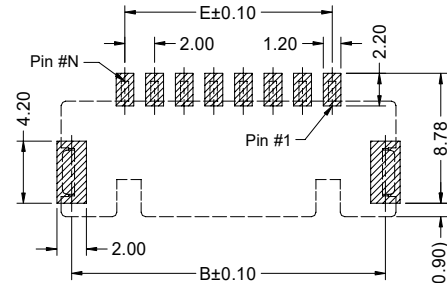
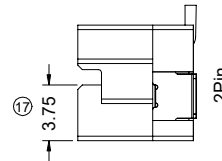
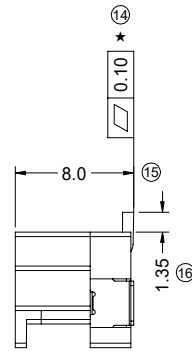
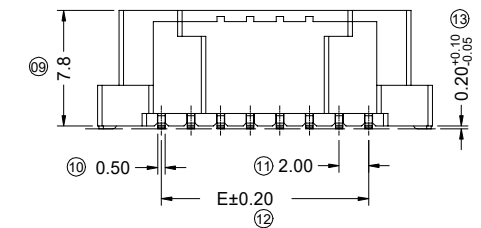
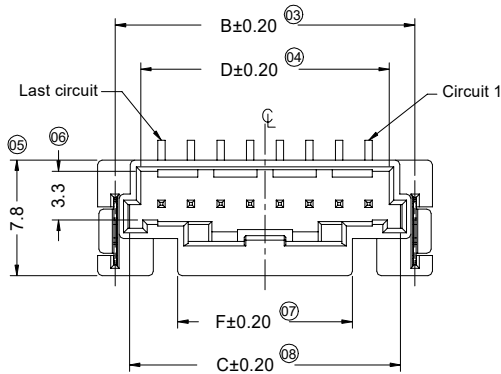
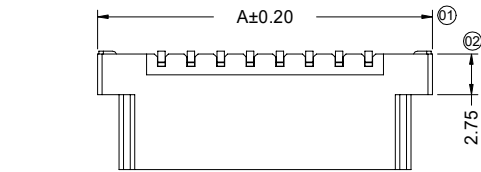
**SMS** 东莞市思索技术股份有限公司  
Dongguan SESO Technology Co.,Ltd.

RoHS

This products can apply to the SESO Doc NO. QA-3-04-005 of Environmental&Material Management Rules



- Specifications :
- Voltage rating: 125V AC / DC
  - Current rating: 3A AC / DC
  - Withstanding voltage: 500V AC/minute
  - Temperature range: -40°C~+105°C
  - Insulation resistance: ≥1000MΩ
  - Contact resistance: ≤10mΩ
  - After environmental testing: ≤20mΩ
  - Material(Pin): Brass
  - Mates With SESO Housing: 2008H
  - "\*" Critical dimension



2008 W V S - XX - XX XXX X XX  
① ② ③ ④ ⑤ ⑥ ⑦ ⑧ ⑨

- ① Series No.
- ② Category: W-wafer
- ③ Connector Type: V-Straight 180°
- ④ Mounting Type: S-SMT
- ⑤ Row No.-Pin No: XX-Single Row XXPin
- ⑥ Plastic material: 9T- PA9T 94V-0; LP- LCP 94V-0
- ⑦ Plating Code; SW1-Matte Tin  
GW01-Contact Area: Gold flash  
Solder Area: Matte Tin
- ⑧ Color: N-Natural; B-Black; R-Red; L-Blue
- ⑨ Packing: W-Reel ,With Mylar C-Reel , With CAP  
R-Reel ,Without Mylar and Cap;

Poles	Dimensions (mm)					
	A	B	C	D	E	F
02	10.60	8.23	6.30	4.80	2.00	6.30
03	12.60	10.23	8.30	6.80	4.00	5.80
04	14.60	12.23	10.30	8.80	6.00	7.80
05	16.60	14.23	12.30	10.80	8.00	9.80
06	18.60	16.23	14.30	12.80	10.00	11.80
07	20.60	18.23	16.30	14.80	12.00	11.80
08	22.60	20.23	18.30	16.80	14.00	11.80
09	24.60	22.23	20.30	18.80	16.00	11.80
10	26.60	24.23	22.30	20.80	18.00	11.80
11	28.60	26.23	24.30	22.80	20.00	11.80
12	30.60	28.23	26.30	24.80	22.00	11.80
13	32.60	30.23	28.30	26.80	24.00	11.80
14	34.60	32.23	30.30	28.80	26.00	11.80
15	36.60	34.23	32.30	30.80	28.00	11.80



DATE	REV	ECN NO.	DESCRIPTION	MODIFY	APPROVAL

GENERAL TOLERANCE
.X ±0.30
.XX ±0.20
.XXX±0.10
X.' ±2'
PROJECT

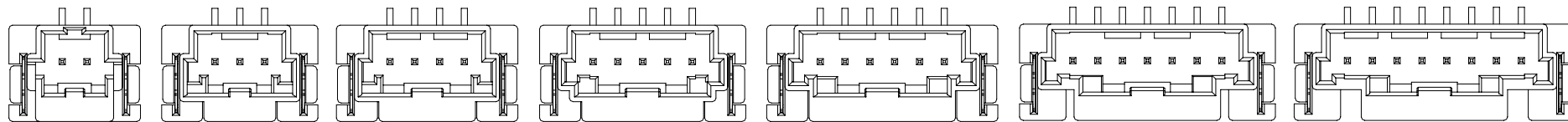
**SMS** 东莞市思索技术股份有限公司  
Dongguan SESO Technology Co.,Ltd.

APPROVAL	CHECK	DRAWN	DATE
Larry	Wang	Xue	2022/10/11

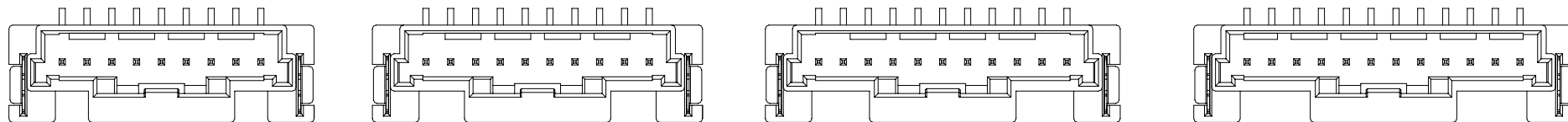
PART NO. 2008WVS-XX-XXXXXX				
TITLE Pitch 2.00 mm 180° SMT Wafer Connectors				
UNIT	SCALE	SHEET	REV	NUMBER
mm	1:1	1/2	A0	A-000

RoHS

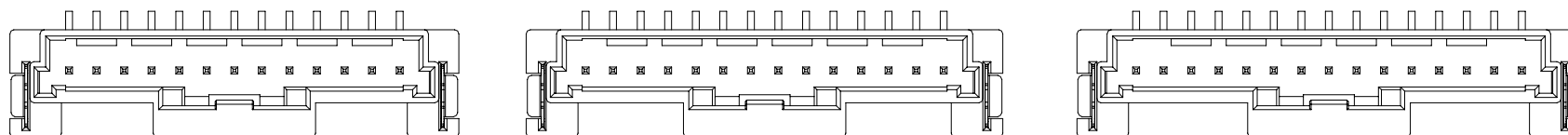
This products can apply to the SESO Doc NO. QA-3-04-005 of Environmental&Material Management Rules



2pin 3pin 4pin 5pin 6pin 7pin 8pin



9pin 10pin 11pin 12pin



13pin 14pin 15pin



					<p>GENERAL TOLERANCE</p> <p>.X ±0.30</p> <p>.XX ±0.20</p> <p>.XXX±0.10</p> <p>X.' ±2'</p>				<p>PART NO. 2008WVS-XX-XXXXXX</p>				
					<p><b>SMS</b> 东莞市思索技术股份有限公司 Dongguan SESO Technology Co.,Ltd.</p>				<p>TITLE Pitch 2.00 mm 180° SMT Wafer Connectors</p>				
					APPROVAL		CHECK		DRAWN		DATE		
					Larry		Wang		Xue		2022/10/11		
DATE	REV	ECN NO.	DESCRIPTION	MODIFY	APPROVAL	PROJECT		UNIT		SCALE	SHEET	REV	NUMBER
								mm	1:1	2/2	A0	A-000	