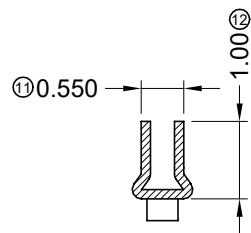
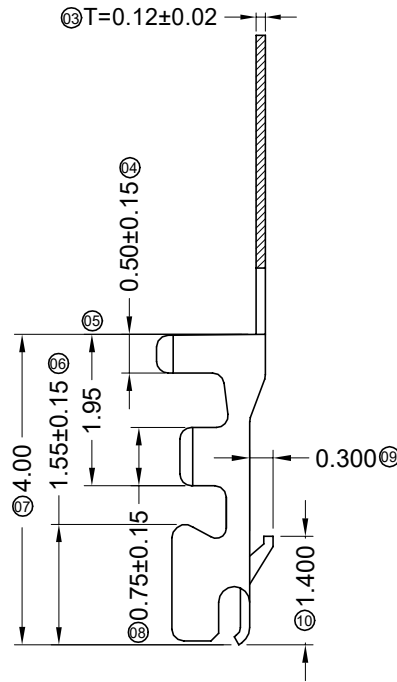
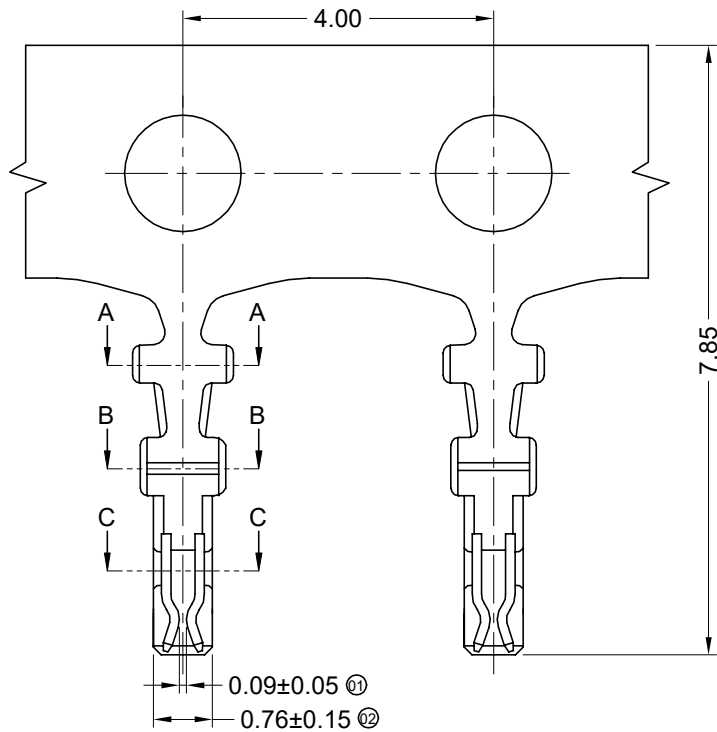
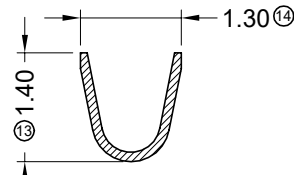


RoHS

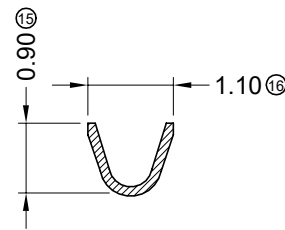
This products can apply to the SWB Doc NO. QA-3-04-005 of Environmental&Material Management Rules



SECTION C-C
SCALE 1:1



SECTION A-A
SCALE 1:1



SECTION B-B
SCALE 1:1

- Specifications :
- Voltage rating: 125V AC / DC
 - Current rating: 1A AC / DC
 - Withstanding voltage: 500V AC/minute
 - Temperature range: -25°C~+85°C
 - Insulation resistance: ≥100MΩ
 - Contact resistance: ≤20mΩ
 - After environmental testing: ≤40mΩ
 - Wire Range: AWG#28-32
 - Insulation O.D.: 0.92mm
 - Used In SWB Housing: 1002H-A、1002H-B

1002 T X-P XX X-A
① ② ③ ④ ⑤ ⑥ ⑦

- ① Series Number
- ② Category: T-terminal
- ③ Shape: Blank-ordinary
- ④ Material: P-Phosphor bronze
- ⑤ Plating code:
V01-All Gold Flash
SN-Bright tin plating 70u" ; 30u" Ni
SN2-50u" Ni Min, 120u" Tin Min
- ⑥ Plating method: Blank-Stamping before plating
- ⑦ Mold No./Mark/Special No. A-Ultra-thin



2020/03/14	F	EN20200314001	Update Drawing Frame	Wzbin	Robing	GENERAL TOLERANCE .X ±0.30 .XX ±0.20 .XXX ±0.10 X° ±2° PROJECT 	东莞市思索连接器有限公司 SWB CONNECTORS CO.,LTD				PART NO. 1002T-PXX-A					
2018/08/16	E	EN20180816002	Optimize The Industrial Structure	Alan qin	Smark						APPROVAL				TITLE 1.00 mm Crimp Style Connectors	
2014/03/12	D		Space of a Whole page Changes	Jova	Bob Sun		Bob Sun	Jova Lau	Alan qin	DATE	2013/08/31	UNIT	SCALE	SHEET	REV	NUMBER
DATE	REV	ECN NO	DESCRIPTION	MODIFY	APPROVAL		Bob Sun	Jova Lau	Alan qin	DATE	2013/08/31	mm	1:1	1/1	F	A-014

RoHS

This products can apply to the SWB Doc NO. QA-3-04-005 of Environmental&Material Management Rules



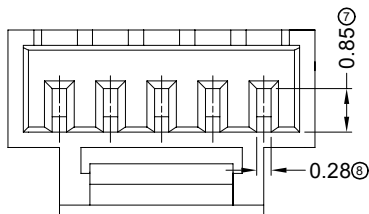
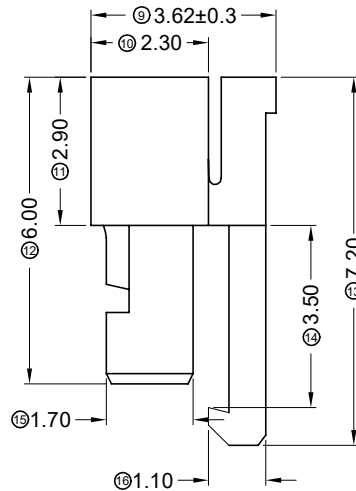
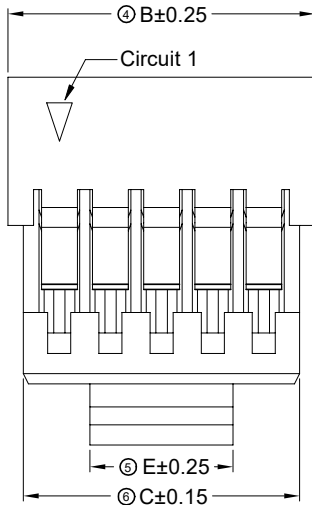
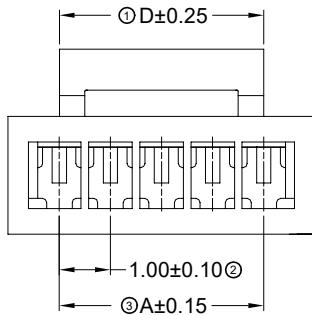
■ Specifications :

- Voltage rating: 125 AC / DC
- Current rating: 1A AC / DC
- Withstanding voltage: 500V AC/minute
- Temperature range: -25°C~+85°C
- Insulation resistance: ≥100MΩ
- Contact resistance: ≤20mΩ
- After environmental testing: ≤40mΩ
- Suitable SWB Terminal: 1002T-A
- Suitable SWB Wafer: 1002W-B

1002 H -1xXX-N0 N B H 01 F

① ② ③ ④ ⑤ ⑥ ⑦ ⑧ ⑨

- ① Series No.
- ② Category: H-HSG
- ③ Row No.-Pin No per row : XX-02P~20P
- ④ Plastic material: N0-PA66 94V-0
- ⑤ Color: N-Natural Color
- ⑥ Packing: B-Bag
- ⑦ RoHS/HF Code: H-Halogen-free
- ⑧ Water code: 01
- ⑨ Special code:F-Other Connectors

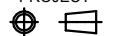


Poles	Dimensions(mm)					Poles	Dimensions(mm)				
	A	B	C	D	E		A	B	C	D	E
02	1.00	3.00	2.40	3.00	1.80	10	9.00	11.00	10.40	6.00	4.80
03	2.00	4.00	3.40	3.00	1.80	11	10.00	12.00	11.40	6.00	4.80
04	3.00	5.00	4.40	4.00	2.80	12	11.00	13.00	12.40	6.00	4.80
05	4.00	6.00	5.40	4.00	2.80	13	12.00	14.00	13.40	6.00	4.80
06	5.00	7.00	6.40	4.00	2.80	14	13.00	15.00	14.40	6.00	4.80
07	6.00	8.00	7.40	4.00	2.80	15	14.00	16.00	15.40	6.00	4.80
08	7.00	9.00	8.40	4.00	2.80	16	15.00	17.00	16.40	6.00	4.80
09	8.00	10.00	9.40	4.00	2.80						

GENERAL TOLERANCE

- .X ±0.30
- .XX ±0.20
- .XXX ±0.10
- X° ±2°

PROJECT



东莞市思索连接器有限公司
SWB CONNECTORS CO.,LTD

PART NO.
1002H-1xXX-N0NBH01F

TITLE
1.00 mm Crimp Style Connectors

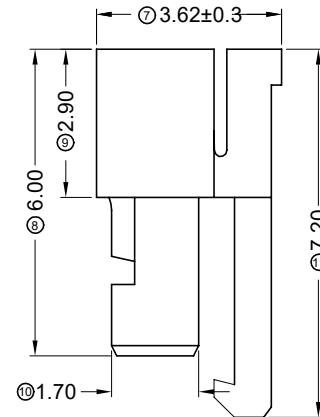
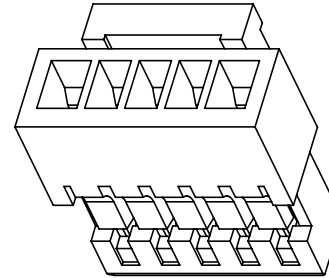
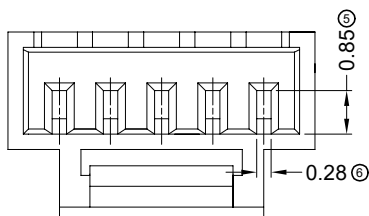
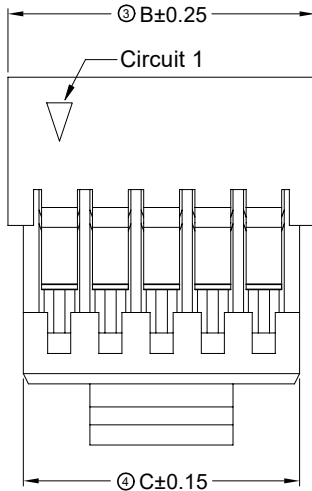
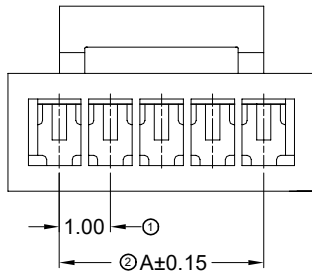
APPROVAL	CHECK	DRAWN	DATE
Robing	Robing	Alan qin	2019/02/28

UNIT	SCALE	SHEET	REV	NUMBER
mm	1:1	1/1	B	A-241

DATE	REV	ECN NO	DESCRIPTION	MODIFY	APPROVAL
2020/03/07	B	EN20200314001	Update Drawing Frame	Wzbin	Robing

RoHS

This products can apply to the SWB Doc NO. QA-3-04-005 of Environmental&Material Management Rules



Specifications :

- Voltage rating: 125 AC / DC
- Current rating: 1A AC / DC
- Withstanding voltage: 500V AC/minute
- Temperature range: -25°C~+85°C
- Insulation resistance: ≥100MΩ
- Contact resistance: ≤20mΩ
- After environmental testing: ≤40mΩ
- Suitable SWB Terminal: 1002T-A
- Mates SWB Wafer: 1002T-B

1002 H -XX B2-N0 XX HF

- ① Series No.
- ② Category: H-HSG
- ③ Row No.-Pin No per row: XX-02P~20P
- ④ Special No.: B2-Ultra-thin hook
- ⑤ Material: N0-PA66 94V-0
- ⑥ Color: Blank-Natural Color
- ⑦ RoHS/HF Code: HF-Halogen Free

Poles	Dimensions(mm)			Poles	Dimensions(mm)		
	A	B	C		A	B	C
02	1.00	3.00	2.40	12	11.00	13.00	12.40
03	2.00	4.00	3.40	13	12.00	14.00	13.40
04	3.00	5.00	4.40	14	13.00	15.00	14.40
05	4.00	6.00	5.40	15	14.00	16.00	15.40
06	5.00	7.00	6.40	16	15.00	17.00	16.40
07	6.00	8.00	7.40	17	16.00	18.00	17.40
08	7.00	9.00	8.40	18	17.00	19.00	18.40
09	8.00	10.00	9.40	19	18.00	20.00	19.40
10	9.00	11.00	10.40	20	19.00	21.00	20.40
11	10.00	12.00	11.40				

DATE	REV	ECN NO	DESCRIPTION	MODIFY	APPROVAL	PROJECT	APPROVAL	CHECK	DRAWN	DATE	PART NO.	TITLE			
2020/03/07	B	EN20200314001	Update Drawing Frame	Wzbin	Robing	1002H-XXB2-N0HF	Kim Huang	Jova Lau	sylvia	2015/11/19	1002H-XXB2-N0HF	1.00 mm Crimp Style Connectors			
											UNIT	SCALE	SHEET	REV	NUMBER
											mm	1:1	X/X	B	A-000



东莞市思索连接器有限公司

SWB CONNECTORS CO.,LTD

PART NO.

1002H-XXB2-N0HF

TITLE

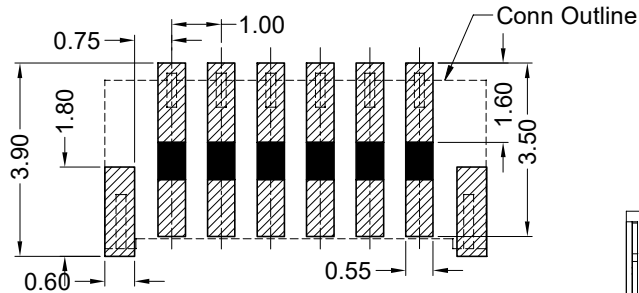
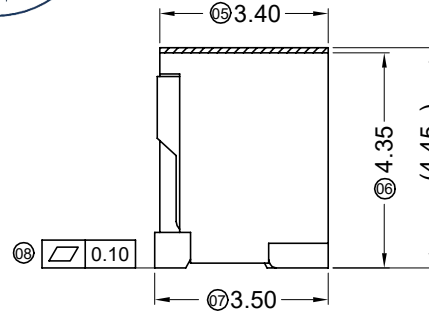
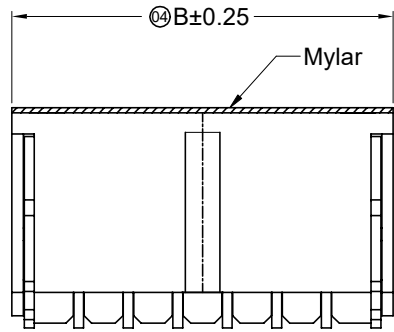
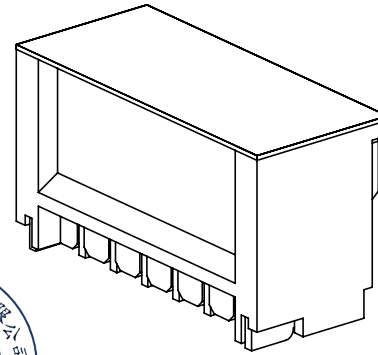
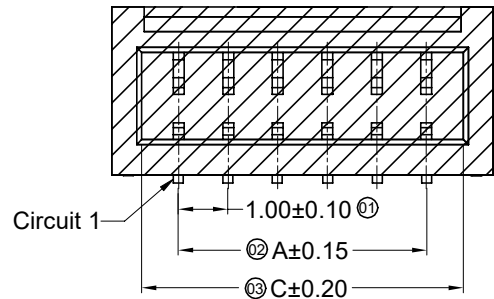
1.00 mm Crimp Style Connectors

UNIT SCALE SHEET REV NUMBER

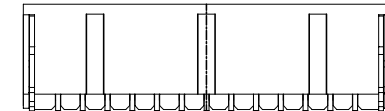
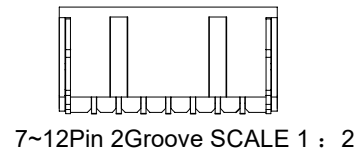
mm 1:1 X/X B A-000

RoHS

This products can apply to the SWB Doc NO. QA-3-04-005 of Environmental&Material Management Rules



Recommended P.C.B Layout
General Tolerance±0.05



13Pin Above 3Groove SCALE 1 : 2

Specifications :

- Voltage rating: 125V AC / DC
- Current rating: 1A AC / DC
- Withstanding voltage: 500V AC/minute
- Temperature range: -25°C~+85°C
- Insulation resistance: ≥100MΩ
- Contact resistance: ≤20mΩ
- After environmental testing: ≤40mΩ
- Material(Pin And Solder Tabs): Phosphor bronze
- Finish(Solder Tabs): Matte Tin Plating
- Mates With SWB Housing: 1002H-B

1002 W V S-XX B HF-9T SW XX W

① ② ③ ④ ⑤ ⑥ ⑦ ⑧ ⑨ ⑩

- ① Series No.
- ② Category: W-wafer
- ③ Connector type: V-Straight Angle 180°
- ④ Mounting type: S-SMT
- ⑤ Row No.-Pin No per row: XX-02P~20P
- ⑥ Special No:
B-With ultra-thin and With Lock;
HF-Halgen Free
- ⑦ Plastic Material: 9T-PA9T 94V-0
- ⑧ Planting Code: SW-Matte Tin plating
- ⑨ Color: Blank-Natural color
- ⑩ Packing: W-Reel with Mylar

Poles	Dimensions(mm)			Poles	Dimensions(mm)		
	A	B	C		A	B	C
02	1.00	3.70	2.50	12	11.00	13.70	12.50
03	2.00	4.70	3.50	13	12.00	14.70	13.50
04	3.00	5.70	4.50	14	13.00	15.70	14.50
05	4.00	6.70	5.50	15	14.00	16.70	15.50
06	5.00	7.70	6.50	16	15.00	17.70	16.50
07	6.00	8.70	7.50	17	16.00	18.70	17.50
08	7.00	9.70	8.50	18	17.00	19.70	18.50
09	8.00	10.70	9.50	19	18.00	20.70	19.50
10	9.00	11.70	10.50	20	19.00	21.70	20.50
11	10.00	12.70	11.50				

2020/03/14	G	EN20200314001	Update Drawing Frame	Wzbin	Robing
2019/07/06	F	ER20190706001	Optimize the product drawing	HAILI.WANG	ROBING
2016/10/22	E	EN20170825001	Modify CAP Dimension	Yu Wei	Jacky
DATE	REV	ECN NO	DESCRIPTION	MODIFY	APPROVAL

GENERAL TOLERANCE	
.X	±0.30
.XX	±0.20
.XXX	±0.10
X°	±2°
PROJECT	



东莞市思索连接器有限公司

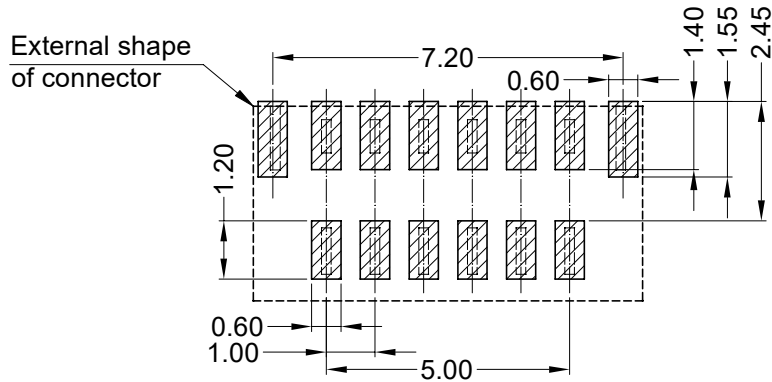
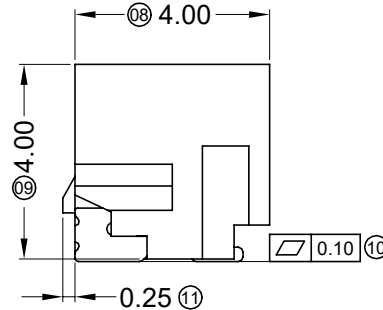
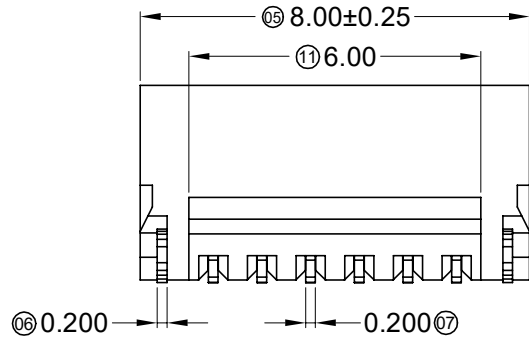
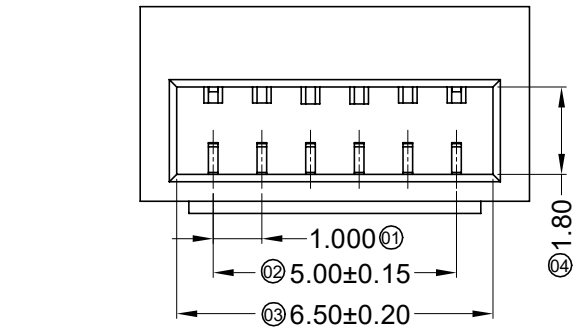
SWB CONNECTORS CO.,LTD

APPROVAL	CHECK	DRAWN	DATE
Robing	Haili.Wang	Allen	2014/01/08

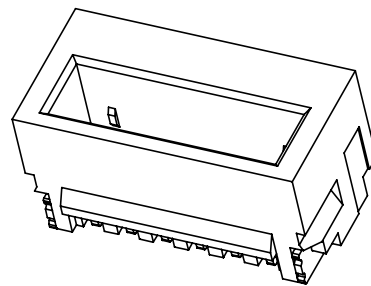
PART NO. 1002WVS-XXBHF-9TSWW				
TITLE 1.00 mm Crimp Style Connectors				
UNIT	SCALE	SHEET	REV	NUMBER
mm	1:1	1/1	G	A-229

RoHS

This products can apply to the SWB Doc NO. QA-3-04-005 of Environmental&Material Management Rules



Recommended P.C.B Layout
General Tolerance±0.05



Specifications :

- Voltage rating: 125V AC / DC
- Current rating: 1A AC / DC
- Withstanding voltage: 500V AC/minute
- Temperature range: -25°C~+85°C
- Insulation resistance: ≥100MΩ
- Contact resistance: ≤20mΩ
- After environmental testing: ≤40mΩ
- Material(Pin):Phosphor Bronze
- Material(Solder Tabs):Brass
- Finish(Solder Tabs):Matte Tin plating
- Mates With SWB Housing:1002H-B

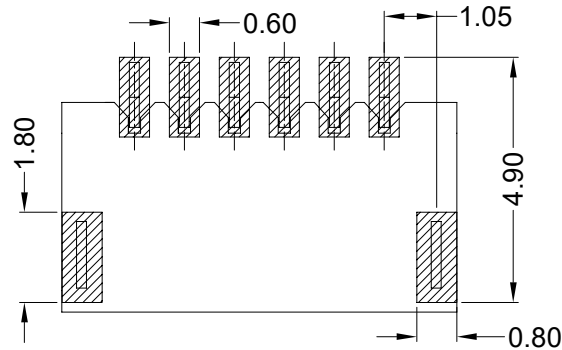
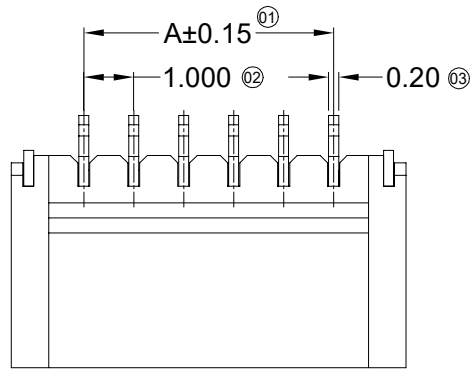
1002 W V S-06 J -6T SW XX
① ② ③ ④ ⑤ ⑥ ⑦ ⑧ ⑨

- ① Series No.
- ② Category: W-wafer
- ③ Connector type: V-Stright Angle 180°
- ④ Mouting type: S-SMT
- ⑤ Row No.-Pin No per row: 06-06P
- ⑥ Special No: J-With Lock
- ⑦ Material: 6T-PA6T UL 94V-0;
- ⑧ Planting Code:
SW-Matte Tin plating 70u"Min. ;30u" Ni Min.
- ⑨ Color: Blank-Natural color

						<p>GENERAL TOLERANCE</p> <p>.X ±0.30</p> <p>.XX ±0.20</p> <p>.XXX ±0.10</p> <p>X° ±2°</p>				<p>东莞市思索连接器有限公司</p> <p>SWB CONNECTORS CO.,LTD</p>				<p>PART NO.</p> <p>1002WVS-06J-TSW</p>								
						<p>APPROVAL</p> <p>Smak</p>				<p>CHECK</p> <p>Guo</p>				<p>DRAWN</p> <p>Alan qin</p>				<p>DATE</p> <p>2017/08/14</p>				
						<p>PROJECT</p> <p>① ②</p>								<p>TITLE</p> <p>1.00mm Crimp Style Connectors</p>								
2020/03/14		B		EN20200314001		Update Drawing Frame		Wzbin		Robing												
DATE	REV	ECN NO	DESCRIPTION			MODIFY	APPROVAL											UNIT	SCALE	SHEET	REV	NUMBER
1																		mm	1:1	1/1	B	A-000

RoHS

This products can apply to the SWB Doc NO. QA-3-04-005 of Environmental&Material Management Rules



Recommended P.C.B Layout
General Tolerance±0.05

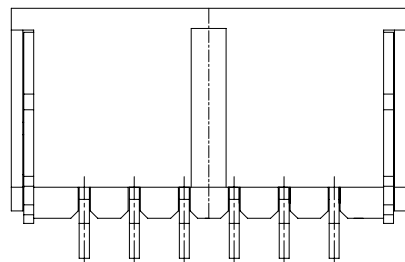
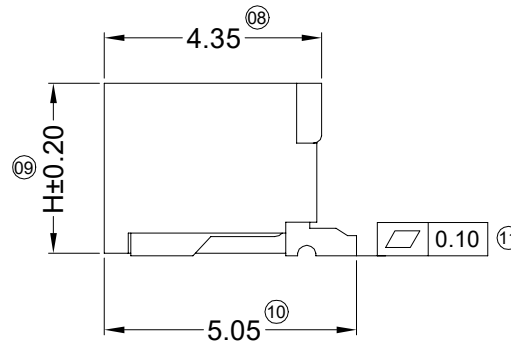
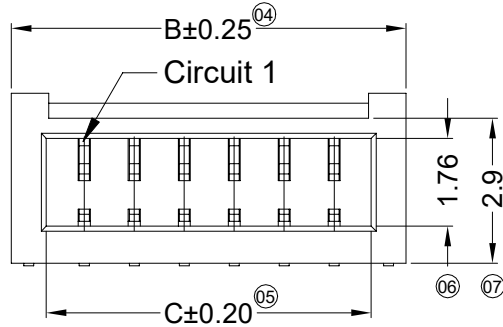
Specifications :

- Voltage rating: 125V AC / DC
- Current rating: 1A AC / DC
- Withstanding voltage: 500V AC/minute
- Temperature range: -25°C~+85°C
- Insulation resistance: ≥100MΩ
- Contact resistance: ≤20mΩ
- After environmental testing: ≤40mΩ
- Material(Pin And Solder Tabs):Phosphor Bronze
- Finish(Solder Tabs):Matte Tin plating

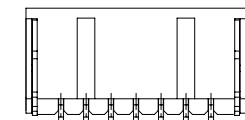
1002 W R S-XX BX XX-XX XXX XX

① ② ③ ④ ⑤ ⑥ ⑦ ⑧ ⑨ ⑩

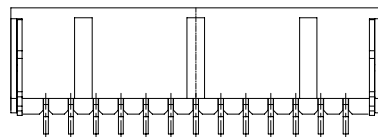
- ① Series No.
- ② Category: W-wafer
- ③ Welding Board Angle: R- Right Angle 90°
- ④ Welding Way: S-SMT
- ⑤ Row No.-Pin No.: XX-02P~20P
- ⑥ Special NO.: B-Ultra-thin With Lock; H=3.40mm
B2-Ultra-thin With Lock;H=3.20mm
- ⑦ HF-Halogen Free; Blank-Halogen
- ⑧ Material: 9T-PA9T 94V-0
- ⑨ Planting Category: SW-Matte Tin plating; V01-Gold flash
- ⑩ Color: Blank-Natural color



2~6Pin 1Groove



7~12Pin 2Groove SCALE 1 : 2



13Pin Above 3Groove SCALE 1 : 2

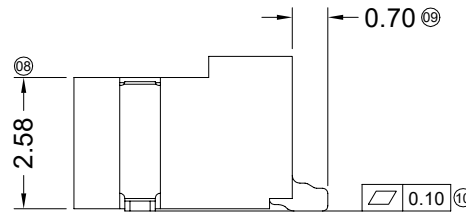
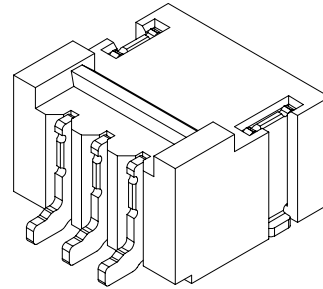
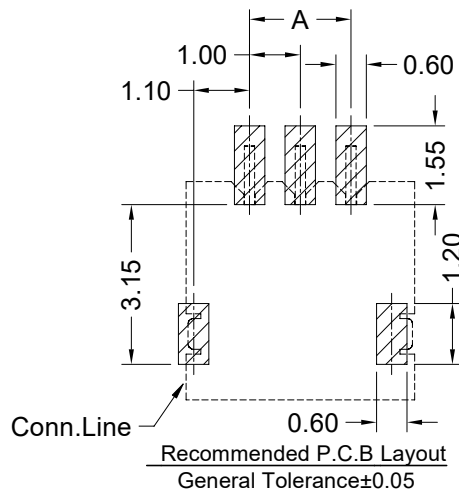
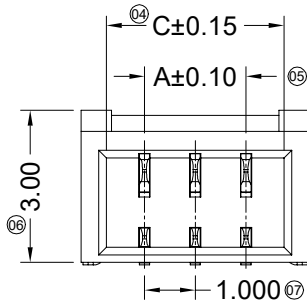
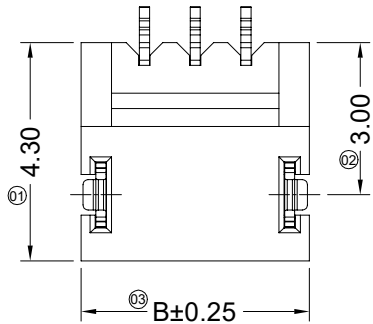


Poles	Dimensions (mm)			Poles	Dimensions (mm)		
	A	B	C		A	B	C
02	1.00	3.90	2.50	12	11.00	13.90	12.50
03	2.00	4.90	3.50	13	12.00	14.90	13.50
04	3.00	5.90	4.50	14	13.00	15.90	14.50
05	4.00	6.90	5.50	15	14.00	16.90	15.50
06	5.00	7.90	6.50	16	15.00	17.90	16.50
07	6.00	8.90	7.50	17	16.00	18.90	17.50
08	7.00	9.90	8.50	18	17.00	19.90	18.50
09	8.00	10.90	9.50	19	18.00	20.90	19.50
10	9.00	11.90	10.50	20	19.00	21.90	20.50
11	10.00	12.90	11.50				

2020/08/12	E		Update Drawing Frame	Xue	Robing	GENERAL TOLERANCE .X ±0.30 .XX ±0.20 .XXX ±0.10 X° ±2° PROJECT 	东莞市思索连接器有限公司 SWB CONNECTORS CO.,LTD				PART NO. 1002WRS-XXBXXX-9TXXX					
2019.07.06	D	ER20190706001	Optimize the product drawing	HAILI.WANG	ROBING						APPROVAL CHECK DRAWN DATE	TITLE 1.00mm Crimp Style Connectors				
2018.08.02	C	EN20180802001	Add Gold flash specification	Alan qin	Smarm							UNIT SCALE SHEET REV NUMBER mm 1:1 1/1 E A-229				
DATE	REV	ECN NO	DESCRIPTION	MODIFY	APPROVAL											

RoHS

This products can apply to the SWB Doc NO. QA-3-04-005 of Environmental&Material Management Rules



■ Specifications :

- Voltage rating: 125V AC / DC
- Current rating: 1A AC / DC
- Withstanding voltage: 500V AC/minute
- Temperature range: -25°C~+85°C
- Insulation resistance: ≥100MΩ
- Contact resistance: ≤20mΩ
- After environmental testing: ≤40mΩ

1002 W R S-XX B1 -6T SW XX
① ② ③ ④ ⑤ ⑥ ⑦ ⑧ ⑨

- ① Series No.
- ② Category: W-WAFER
- ③ Connector type: R-Right Angle 90°
- ④ Mouting type: S-SMT
- ⑤ Row No.-Pin No per row: XX-02P~20P
- ⑥ Special No.:B1-Pad On both sides of the middle position
- ⑦ Material: 6T -PA6T 94V-0;
- ⑧ Plating code: SW- Matte Tin
- ⑨ Color : Blank-Natural Color ;



Poles	Dimensions (mm)			Poles	Dimensions (mm)		
	A	B	C		A	B	C
02	1.00	3.50	2.50	12	11.00	13.50	12.50
03	2.00	4.50	3.50	13	12.00	14.50	13.50
04	3.00	5.50	4.50	14	13.00	15.50	14.50
05	4.00	6.50	5.50	15	14.00	16.50	15.50
06	5.00	7.50	6.50	16	15.00	17.50	16.50
07	6.00	8.50	7.50	17	16.00	18.50	17.50
08	7.00	9.50	8.50	18	17.00	19.50	18.50
09	8.00	10.50	9.50	19	18.00	20.50	19.50
10	9.00	11.50	10.50	20	19.00	21.50	20.50
11	10.00	12.50	11.50				

					<p>GENERAL TOLERANCE</p> <p>.X ±0.30</p> <p>.XX ±0.20</p> <p>.XXX ±0.10</p> <p>X.° ±2°</p>				<p>APPROVAL</p> <p>Robing</p>				<p>CHECK</p> <p>Robing</p>				<p>DRAWN</p> <p>sylvia</p>				<p>DATE</p> <p>2020/5/21</p>			
					<p>PROJECT</p> <p>Robing</p>																			
DATE	REV	ECN NO	DESCRIPTION	MODIFY	APPROVAL																			



PART NO.					1002WRS-XXB1-6TSW				
TITLE									
1.00mm Crimp Style Connector									
UNIT	SCALE	SHEET	REV	NUMBER					
mm	1:1	1/1	A	A-084					