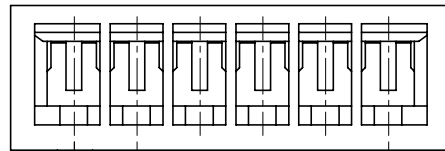


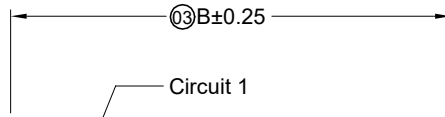
RoHS

This products can apply to the SWB Doc NO. QA-3-04-005 of Environmental&Material Management Rules



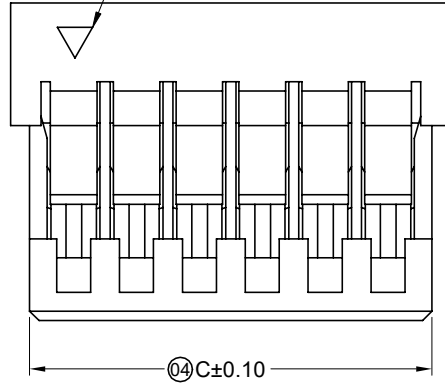
1.00 (01)

(02)A±0.20



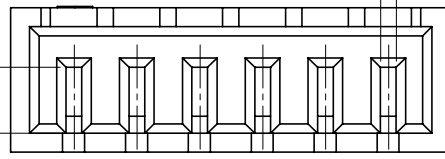
(03)B±0.25

Circuit 1

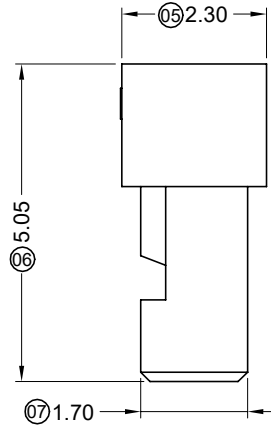
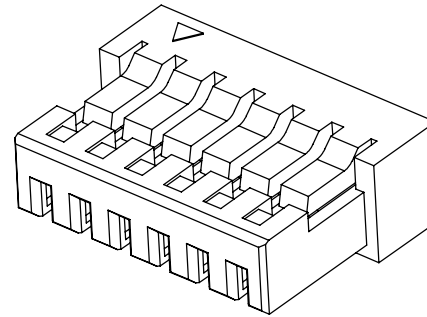


(04)C±0.10

(08) 1.05



(09) 0.25



(05) 2.30

(07) 1.70

- Specifications :
- Voltage rating: 125V AC / DC
 - Current rating: 1A AC / DC
 - Withstanding voltage: 500V AC/minute
 - Temperature range: -25°C~+85°C
 - Insulation resistance: ≥100MΩ
 - Contact resistance: ≤20mΩ
 - After environmental testing: ≤40mΩ
 - Suitable SWB Terminal: 1002T-A

1002 H -XX A-N0 HF XX

(01) (02) (03) (04) (05) (06) (07)

- (01) Series No.
- (02) Category: H-HSG
- (03) Pin No.: XX-02P~16P
- (04) Special No. A-Ultra-thin
- (05) Material: N0-PA66 94V-0
- (06) HF-Halogen Free
- (07) Color: Blank-Natural Color BK-Black



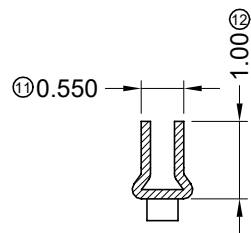
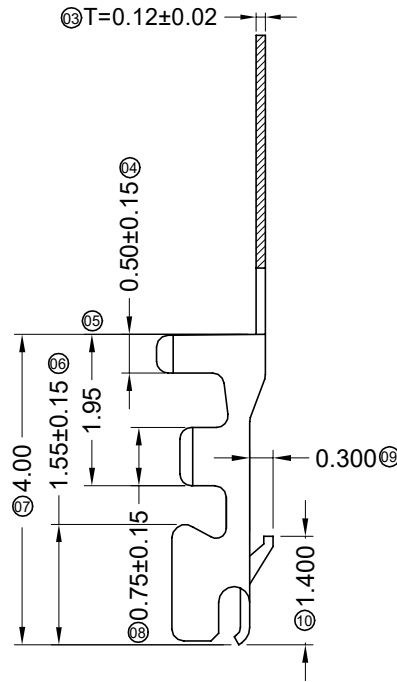
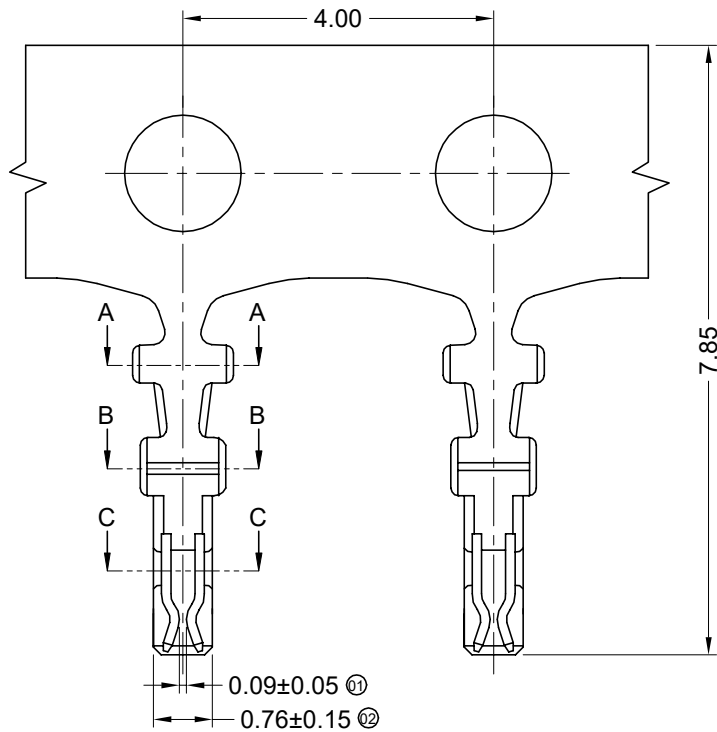
Poles	Dimensions (mm)			Poles	Dimensions (mm)		
	A	B	C		A	B	C
02	1.00	3.00	2.40	10	9.00	11.00	10.40
03	2.00	4.00	3.40	11	10.00	12.00	11.40
04	3.00	5.00	4.40	12	11.00	13.00	12.40
05	4.00	6.00	5.40	13	12.00	14.00	13.40
06	5.00	7.00	6.40	14	13.00	15.00	14.40
07	6.00	8.00	7.40	15	14.00	16.00	15.40
08	7.00	9.00	8.40	16	15.00	17.00	16.40
09	8.00	10.00	9.40				

DATE	REV	ECN NO	DESCRIPTION	MODIFY	APPROVAL	PROJECT	APPROVAL	CHECK	DRAWN	DATE	UNIT	SCALE	SHEET	REV	NUMBER	
2020/03/07	B	EN20200314001	Update Drawing Frame	Wzbin	Robing	GENERAL TOLERANCE	东莞市思索连接器有限公司 SWB CONNECTORS CO.,LTD				mm	1:1	1/1	B	A-241	
						.X ±0.30		APPROVAL								
						.XX ±0.20										
						.XXX ±0.10										
						X° ±2°										
						PROJECT										

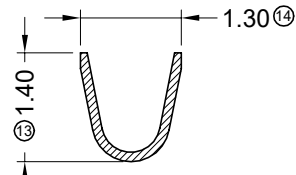
PART NO.				
1002H-XXA-N0HFXX				
TITLE				
1.00 mm Crimp Style Connectors				
UNIT	SCALE	SHEET	REV	NUMBER
mm	1:1	1/1	B	A-241

RoHS

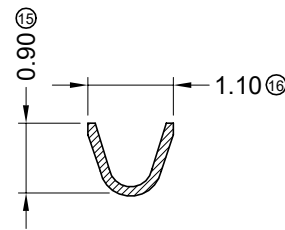
This products can apply to the SWB Doc NO. QA-3-04-005 of Environmental&Material Management Rules



SECTION C-C
SCALE 1:1



SECTION A-A
SCALE 1:1



SECTION B-B
SCALE 1:1

- Specifications :
- Voltage rating: 125V AC / DC
 - Current rating: 1A AC / DC
 - Withstanding voltage: 500V AC/minute
 - Temperature range: -25°C~+85°C
 - Insulation resistance: ≥100MΩ
 - Contact resistance: ≤20mΩ
 - After environmental testing: ≤40mΩ
 - Wire Range: AWG#28-32
 - Insulation O.D.: 0.92mm
 - Used In SWB Housing: 1002H-A、1002H-B

1002 T X-P XX X-A
① ② ③ ④ ⑤ ⑥ ⑦

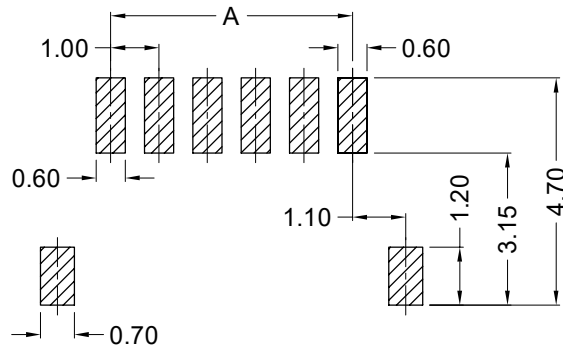
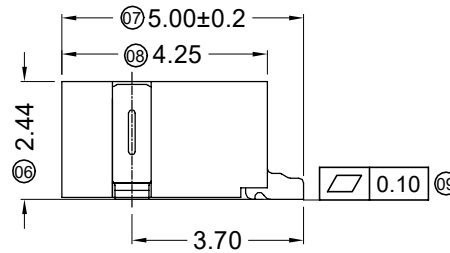
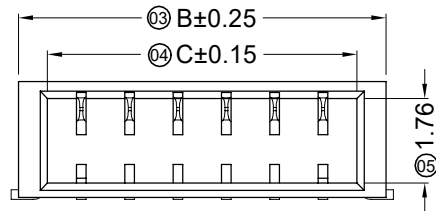
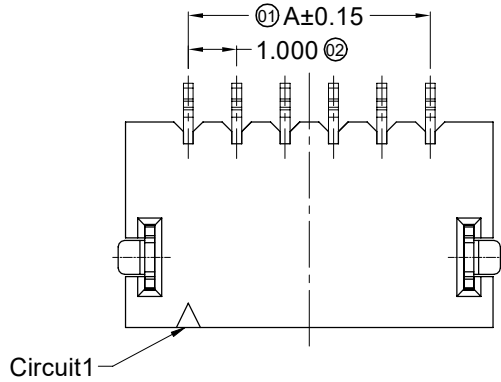
- ① Series Number
- ② Category: T-terminal
- ③ Shape: Blank-ordinary
- ④ Material: P-Phosphor bronze
- ⑤ Plating code:
V01-All Gold Flash
SN-Bright tin plating 70u" ; 30u" Ni
SN2-50u" Ni Min, 120u" Tin Min
- ⑥ Plating method: Blank-Stamping before plating
- ⑦ Mold No./Mark/Special No. A-Ultra-thin



2020/03/14	F	EN20200314001	Update Drawing Frame	Wzbin	Robing	GENERAL TOLERANCE .X ±0.30 .XX ±0.20 .XXX ±0.10 X° ±2° PROJECT 	东莞市思索连接器有限公司 SWB CONNECTORS CO.,LTD APPROVAL CHECK DRAWN DATE Bob Sun Jova Lau Alan qin 2013/08/31				PART NO. 1002T-PXX-A				
2018/08/16	E	EN20180816002	Optimize The Industrial Structure	Alan qin	Smarrk						TITLE 1.00 mm Crimp Style Connectors				
2014/03/12	D		Space of a Whole page Changes	Jova	Bob Sun						UNIT SCALE SHEET REV NUMBER mm 1:1 1/1 F A-014				
DATE	REV	ECN NO	DESCRIPTION	MODIFY	APPROVAL										

RoHS

This products can apply to the SWB Doc NO. QA-3-04-005 of Environmental&Material Management Rules



Recommended P.C.B Layout
General Tolerance±0.05



Specifications :

- Voltage rating: 125V AC / DC
- Current rating: 1A AC / DC
- Withstanding voltage: 500V AC/minute
- Temperature range: -25°C~+85°C
- Insulation resistance: ≥100MΩ
- Contact resistance: ≤20mΩ
- After environmental testing: ≤40mΩ
- Mates With SWB Housing: 1002H-XXA

1002 W R S-XX A-9T SN XX

① ② ③ ④ ⑤ ⑥ ⑦ ⑧ ⑨

- ① Series No.
- ② Category: W-wafer
- ③ Connector type: R-Right Angle 90°
- ④ Mounting type: S-SMT
- ⑤ Row No.-Pin No per row: XX-Single Row
- ⑥ Special No.: A-On both sides of the inserted into the positioning piece in the middle
- ⑦ Material: 9T-PA9T 94V-0
- ⑧ Plating code: SN-Bright tin plating
- ⑨ Color: Blank-natural color

Poles	Dimensions(mm)			Poles	Dimensions(mm)		
	A	B	C		A	B	C
02	1.00	3.50	2.50	10	9.00	11.50	10.50
03	2.00	4.50	3.50	11	10.00	12.50	11.50
04	3.00	5.50	4.50	12	11.00	13.50	12.50
05	4.00	6.50	5.50	13	12.00	14.50	13.50
06	5.00	7.50	6.50	14	13.00	15.50	14.50
07	6.00	8.50	7.50	15	14.00	16.50	15.50
08	7.00	9.50	8.50	16	15.00	17.50	16.50
09	8.00	10.50	9.50				

DATE	REV	ECN NO	DESCRIPTION	MODIFY	APPROVAL	PROJECT	APPROVAL	CHECK	DRAWN	DATE	PART NO.	TITLE										
2020/03/14	C	EN20200314001	Update Drawing Frame	Wzbin	Robing	GENERAL TOLERANCE	东莞市思索连接器有限公司 SWB CONNECTORS CO.,LTD	APPROVAL	CHECK	DRAWN	DATE	1002WRS-XXA-9TSN										
2019/12/06	B	ER20191206001	Resize the drawing	sylvia	Robing	.X ±0.30						<table border="1"> <tr> <th>UNIT</th> <th>SCALE</th> <th>SHEET</th> <th>REV</th> <th>NUMBER</th> </tr> <tr> <td>mm</td> <td>1:1</td> <td>1/1</td> <td>C</td> <td>A-229</td> </tr> </table>	UNIT	SCALE	SHEET	REV	NUMBER	mm	1:1	1/1	C	A-229
UNIT	SCALE	SHEET	REV	NUMBER																		
mm	1:1	1/1	C	A-229																		
						.XX ±0.20																
						.XXX ±0.10																
						X° ±2°																
						PROJECT																
							Robing	Robing	sylvia	2019/08/05												